



OCEAN

COASTAL BEAUTY AND MICRO CRACKLE ELEGANCE COME TOGETHER IN PERFECT HARMONY IN THE OCEAN COLLECTION.

When looking into the ocean on a calm day, you feel a sense of serenity and a depth of vision. Relaxation, reflection and visual stimulation are inherent to the Ocean Collection.



MICRO CRACKLE



When the surface effects of a typical crackled glaze combine with the unique micro-crackle effect, its reflective, yet dimensional surface makes the tile not only unique, but transitional in design from classic to contemporary. The decorative components and finishing pieces of the Ocean Collection color palette make it the choice of designers and homeowners globally. Enjoy your day at the beach every time you enter the room.

OCEAN Micro Crackle



Find out the product code simply by putting together the color and the item

Example: **ADOW 836**

GLOSSY FINISH - SLIGHTLY UNDULATED SURFACE



WHITECAPS **ADOW**



SAND DOLLAR **ADOS**



SURF GRAY **ADOG**



TOP SAIL **ADOT**

FIELD TILES

UNDULATED

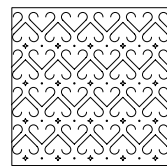


836 3"x6"

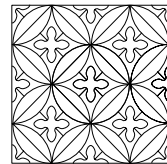


839 3"x9"

DECORATIVE ACCESSORIES



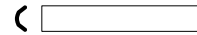
501 6"x6" Persian Deco



502 6"x6" Caspian Deco



207 0.8"x6" Stripe Liner



208 1"x6" Bar Liner



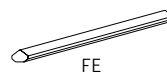
209 1"x6" Quarter Round



210 Beak

TRIMS

FINISHING EDGES



FE



FE Corner

506 FE 0.4"x6"

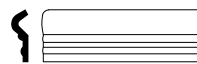
509 FE 0.4"x9"

500 FE Corner

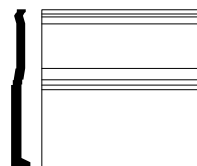
FINISHING TOUCHES



201 1.2"x6" Chair Molding



204 2"x6" Rail Molding



809 6"x6" Base Board (Glazed Top Edge)

END CAPS



202



205



810

FRAME CORNERS

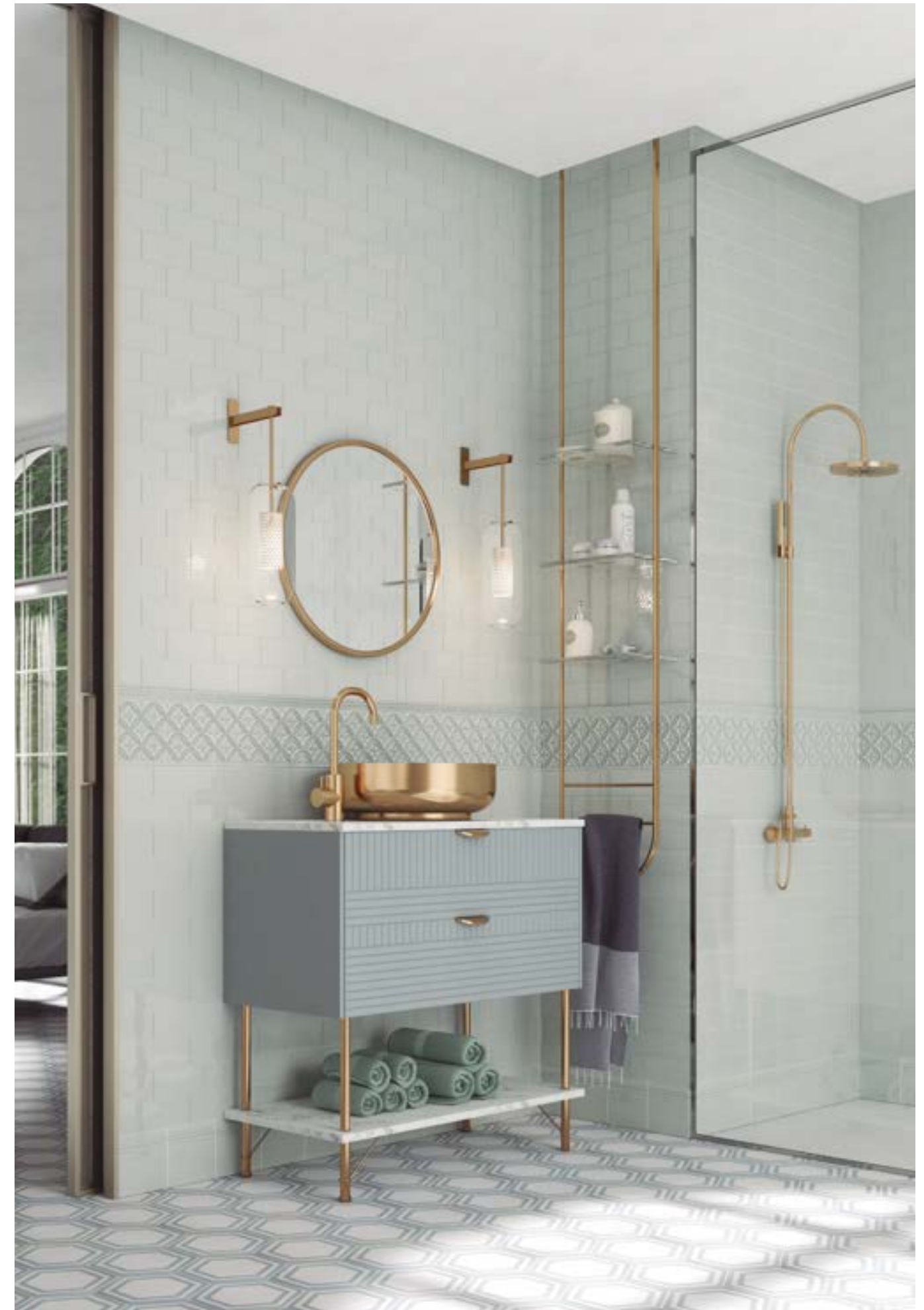


203



206

WHITECAPS **ADOW**



SAND DOLLAR **ADOS**



TOP SAIL **ADOT**



SURF GRAY **ADOG**





FIELD TILES		
SIZE	SIZE SPECIFICATIONS	THICKNESS*
UNDULATED TILE		
3"x6"	2.913"x5.827" (74mm x 148mm)	0.307" (7.8mm)
3"x9"	2.913"x8.740" (74mm x 222mm)	0.319" (8.1mm)
DECORATIVE ACCESSORIES & FINISHING TOUCHES		
Stripe Liner 0.8"x6"	0.787"x5.827" (20mm x 148mm)	0.472" (12mm)
Bar Liner 1"x6"	0.984"x5.866" (25mm x 149mm)	0.630" (16mm)
Quarter Round 1"x6"	0.984"x5.827" (25mm x 148mm)	0.354" (9mm)
Chair Molding 1.2"x6"	1.181"x5.866" (30mm x 149mm)	0.787" (20mm)
Rail Molding 2"x6"	1.968"x5.827" (50mm x 148mm)	0.945" (24mm)
Base Board (Glazed Top Edge) 6"x6"	5.866"x5.866" (149mm x 149mm)	0.551" (14mm)

APPLICATIONS		
	SUITABLE RESIDENTIAL	SUITABLE COMMERCIAL
Bathroom Walls**	YES	YES
Shower Walls**	YES	YES
Kitchen Walls**	YES	YES
Countertops	NO	NO
Fireplace Surrounds**	YES	YES
Outdoor Cooking / Bar Spaces (Non Freeze-Thaw Climates)**	YES	YES
Pool Waterlines / Water Fountains	NO	NO
Floors	NO	NO
PERFORMANCE CHARACTERISTICS		
	TEST METHOD ASTM / ISO	RESULT
Water Absorption	C-373 / 10545-3	Pass
Breaking Strength	C-648 / 10545-4	Pass
Stain Resistance***	C-1378 / 10545-14	Resistant
Chemical Resistance	C-650 / 10545-13	Non Resistant
Facial Dimensions	C-499 / 10545-2	Pass
Range of Thickness	C-499 / 10545-2	Pass
Warpage	C-485 / 10545-2	Pass

INSTALLATION	
GROUT JOINT RECOMMENDATION	SHADE VARIATION
1/8"	VI - Uniform Appearance

CLEANING RECOMMENDATIONS
Routine with a non-abrasive/non-acidic, mild and PH neutral cleaner
SEALING GUIDELINES
Solvent based penetrating sealer suitable for ceramic tiles

CHARACTERISTICS	
Glaze	Crackle with subtle movement
Surface Sheen	Glossy
Texture	Slightly Undulated

*Thickness is understood as the highest point of the tile.

**Crackle tiles must be properly sealed. (See SEALING instructions in INSTALLATION & MAINTENANCE guidelines).

*** In order to accomplish this test, the tile must be properly sealed.

Due to the nature of our tile, a certain amount of variation in color, shading, surface and texture are to be expected.



CONTACT US

Corporate Headquarters South East Distribution Center

9450 N.W.12th St.
Miami, FL 33172
Office: 305-513-4633
Fax: 305-513-4634
customerservice@adexusa.com

West Coast Distribution Center

1745 N. St. Thomas Cir.
Orange, CA 92865
Office: 714-773-0197
Fax: 714-773-9352
customerservicewest@adexusa.com

North East Distribution Center

1000 Wall St. W.
Lyndhurst, NJ 07071
Office: 201-355-8772
Fax: 201-636-2802
customerservicene@adexusa.com

www.adexusa.com

