

HOPS INFO TECH

Un alternarsi di toni, superfici e consistenze creano un'amalgama uniforme e coesa. 3 nuance di bianchi, grigi e neri, colori acromatici che accostati creano sfumature inattese con una propria dimensione, un proprio equilibrio e un proprio linguaggio. Monocottura da rivestimento: opaca corposa, lucida fluida. Due superfici differenti per esplorare ed interpretare una visione comune: il tempo che lascia segni e impronte sulla propria pelle, un passato tutto da riscoprire.

A succession of tones, surfaces and textures create a uniform and cohesive mix. 3 nuance shades of whites, grays and blacks, achromatic colors that create unexpected hues juxtaposed with each own its dimension, its own balance and its own language. Single fired wall coverings: dense in the opaque finish and fluid in the glossed finish. Two different roads to explore and interpret as a common vision: Time that leaves marks and fingerprints on its skin, a past to be discovered all over again.



TECHNICAL DETAILS

HOPS

TECHNOLOGY MONOCOTTURA IN PASTA BIANCA - WHITE BODY SINGLE-FIRED WALL TILE

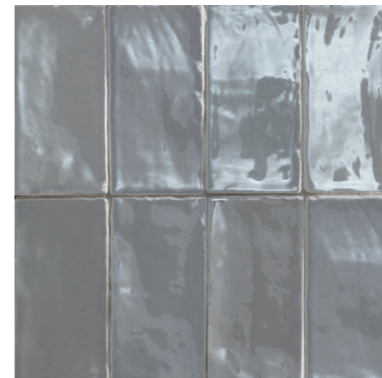
FINISH OPACO / LUCIDO - MATTE / GLOSSY

THICKNESS 10 MM

HOPS LUX **COLORS**



4100363 LUX BIANCO



4100364 LUX GRIGIO

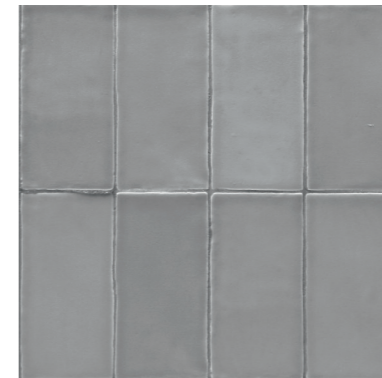


4100365 LUX NERO

HOPS MATTE **COLORS**



4100366 MATTE BIANCO

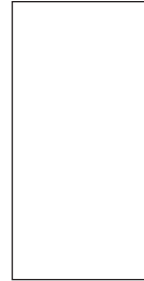


4100367 MATTE GRIGIO



4100368 MATTE NERO

HOPS SIZES



7,5x15 3"x6"

HOPS PACKING

HOPS	pcs	m ²	kg/box	box/pal	m ² /pal	kg/pal	thickness
7,5x15 3"x6"	36	0,405	6,30	144	58,32	907,20	10 mm

HOPS GROUTS

HOPS	colori stucchi consigliati / advised grouts colors
BIANCO	Kerakoll KK 2
GRIGIO	Kerakoll KK 6
NERO	Kerakoll KK 12

HOPS TECHNICAL FEATURES

BIII
GROUP

NORMA STANDARD	CARATTERISTICHE FEATURES	VALORE PRESCRITTO REQUIRED VALUE	HOPS
ISO 10545/2	DIMENSIONI - SIZE		
	lunghezza e larghezza length and width	± 0,5 % ± 2,0 mm	± 0,5 % ± 2,0 mm
	spessore thickness	± 10 % ± 0,5 mm	± 10 % ± 0,5 mm
	rettilinearità degli spigoli straightness of sides	± 0,3 % ± 1,5 mm	± 0,3 % ± 1,5 mm
	ortogonalità rectangularity	± 0,5 % ± 2,0 mm	± 0,5 % ± 2,0 mm
ISO 10545/3	planarità flatness	+ 0,5 % + 2,0 mm - 0,3 % - 1,5 mm	+ 0,5 % + 2,0 mm - 0,3 % - 1,5 mm
	assorbimento d'acqua water absorption	E > 10 %	16 %
ISO 10545/13	resistenza agli attacchi chimici chemical resistance	nessuna alterazione visibile no visible alteration	resiste resistant
ASTM C650	chemical resistance		unaffected
ISO 10545/14	resistenza alle macchie stain resistance	≥ CLASSE 3	5
ASTM C1378	stain resistance	≥ CLASSE 3	≥ 4
ISO 10545/11	resistenza al cavillo crazing resistance	resiste resistant	resiste resistant