



STELLAR *quickship*

HANDCRAFTED IN AMERICA

Sonoma
TILEMAKERS

STELLAR *quickship*

STELLAR *quickship*

FIELD TILE, LINERS & MOULDINGS

DECORATIVE FIELD



3x6 SQUARE EDGE



3x9 SQUARE EDGE



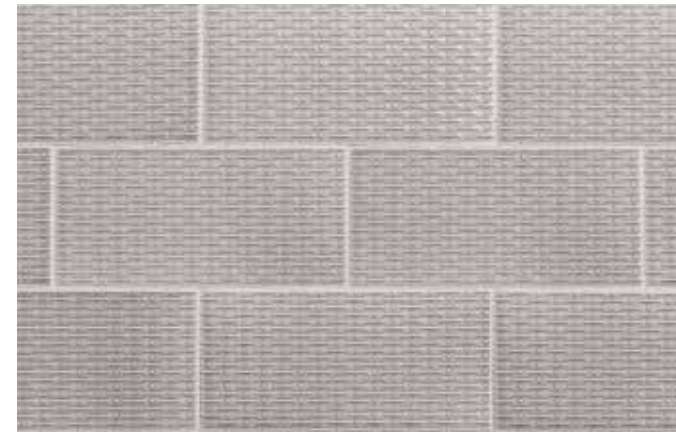
6x12 SQUARE EDGE



DELANCEY
3x9



TRESTLE
8 5/8 x 2 5/8



CAMPTON
4x8



LINERS & MOULDINGS



1/2x8
WARREN



1/2x8
METRO



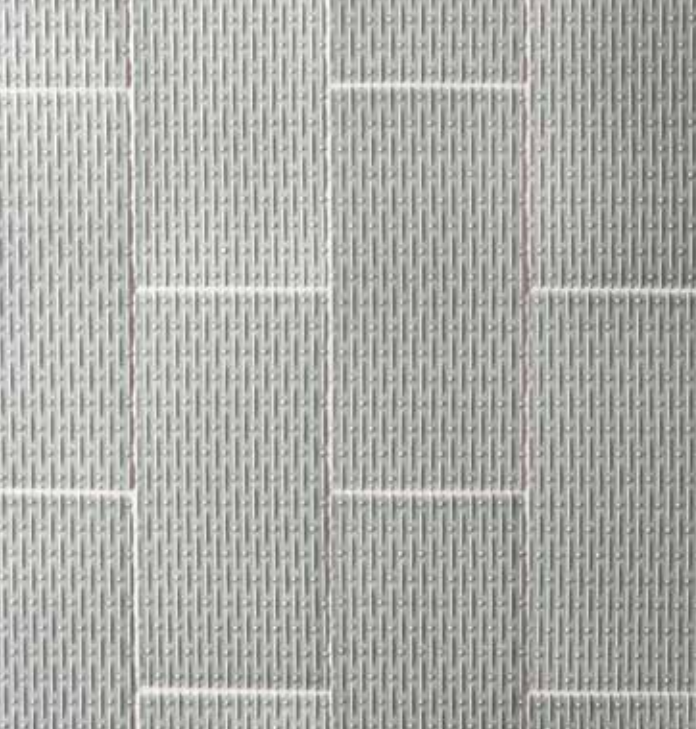
3/4x8
WILDOMAR



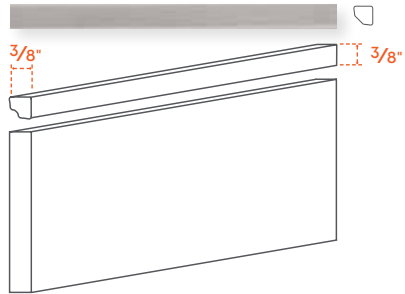
1 3/8x8
VALETTE

(FACING):
3X6 IN BLANCO
CREDIT: JRP DESIGN & REMODEL, INC.

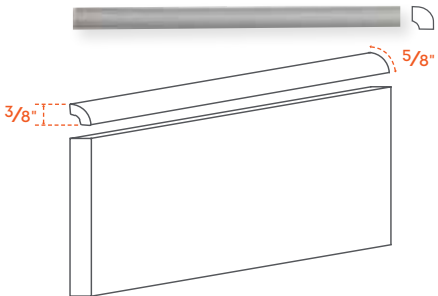




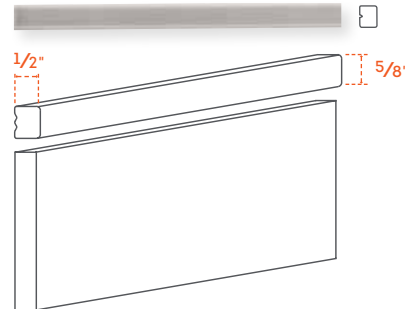
1 8" FINISH TRIM
SQUARE EDGE
3/8" PROFILE



2 8" EDGE TRIM
ROUND EDGE
3/8" PROFILE



3 8" BOX TRIM
SQUARE EDGE
1/2" PROFILE
GLAZED ON LONG EDGE AND FACE



4 BULLNOSE

SQUARE EDGE	BULLNOSE LONG EDGE	BULLNOSE SHORT EDGE
3x6	●	●
3x9	●	●
6x12	●	●



3x9 AND 8" FINISH TRIM IN BLANCO

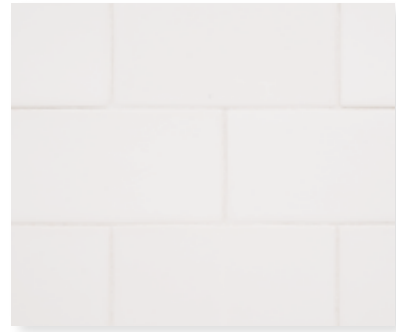
(FACING):
(CLOCKWISE) CAMPTON IN MIST,
TRESTLE IN WEDGEWOOD, (CREDIT): PARKER JONES INTERIORS
TRESTLE IN BOSSY GRAY, (CREDIT): CASTLE HOMES,
LESLIE BROWN PHOTOGRAPHY

STELLAR *quickship*

STELLAR *quickship*

COLOR PALETTE

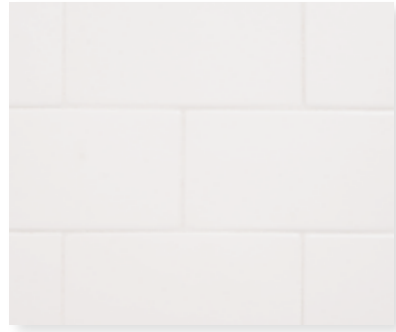
COLOR PALETTE



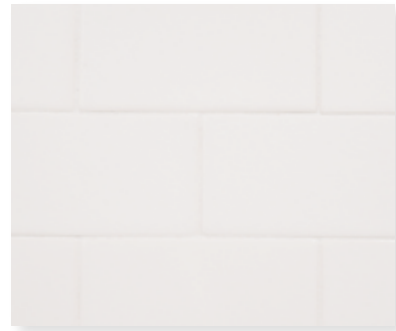
BLANCO
GLOSSY



ALPINE SNOW
GLOSSY



GOOSE DOWN
MATTE



GARDENIA
CRACKLE



CREAMY CRACKLE
CRACKLE



CLOUD DANCER
GLOSSY



METRO GRAY
GLOSSY



DAYDREAM
CRACKLE



BOSSY GRAY
GLOSSY



PENTHOUSE
CRACKLE



SMOKE
CRACKLE



RAINSTORM
CRACKLE



DOVETAIL
CRACKLE



AQUARIUS
GLOSSY



MIST
CRACKLE



QUICKSILVER
CRACKLE



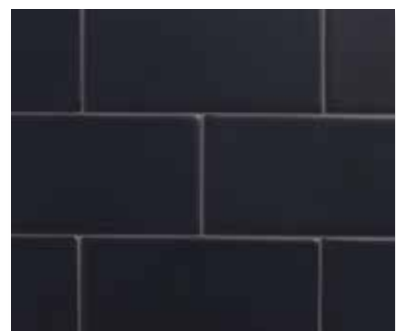
PUMICE
MATTE



WEDGEWOOD
CRACKLE



FONTAINEBLEAU
CRACKLE



PITCH BLACK
MATTE

COLORS WILL VARY. ALWAYS REFER TO RANGE BOARDS AND CURRENT SAMPLES.

STELLAR *quickship*

HANDCRAFTED IN AMERICA



THE
handcrafted
DIFFERENCE



Stellar *quickship* showcases the same gorgeous handcrafted quality of our core Stellar line. The best part? It's ready to ship quickly.

AT-A-GLANCE

- 20 COLORS
- 3 FIELD SIZES
- 3 DECORATIVE FIELD
- 4 LINERS & MOULDINGS
- BULLNOSE & TRIM

APPLICATIONS

- INTERIOR WALLS
- SHOWERS
- STEAM SHOWERS (GLOSS, MATTE)
- LIGHT DUTY COUNTERTOPS & FLOORS (MATTE)*

*See Tech Info for more details at sonomatilemakers.com

*PLEASE REFER TO OUR DCOF (DYNAMIC COEFFICIENT OF FRICTION) STATEMENT AT [SONOMATILEMAKERS.COM/RESOURCES/#DCOF](https://sonomatilemakers.com/resources/#dcof)

We are committed to delivering the highest quality handcrafted tile to you. Variation in shade, texture and size are inherent characteristics of our handcrafted tile. Always inspect your tiles before they are installed as installation constitutes acceptance.

JUST SO YOU KNOW...

- Stellar is handcrafted and field tile will vary in size and thickness. Particularly with the large format sizes such as 4x12 & 6x12. Grout lines may not always be perfectly straight and square. Once properly installed and grouted, the beauty is enhanced by such variation.
- Crackle glazes require periodic maintenance to avoid moisture intrusion.
- Test all dark grouts prior to installation.

For more detailed technical information, visit sonomatilemakers.com



sonomatilemakers.com

© 2023 SONOMA TILEMAKERS. ALL RIGHTS RESERVED. COVER: DELANCEY IN RAINSTORM (CREDIT: MORRISON INTERIORS); MICHAEL CLIFFORD PHOTOGRAPHY; BACK COVER (RIGHT PHOTO): SAG IN RAINSTORM; CREDIT: ROBERT FRANK INTERIORS; CLARK DUGGAR PHOTOGRAPHY