



# Resalvage

Featuring 1/2" Sintered Glass tile.  
Also available in 3/4" Vitreous Glass,  
3/8" Vitreous Glass, and Natural Stone.



## THE PROCESS

Artaic's award-winning mosaics can be found around the globe, enhancing the design of spaces large and small. Discover this versatile solution for interiors and exteriors that can play well with traditional or modern, classic or contemporary. Whether it's a stunning showpiece making a bold statement, or a subtle undertone of sophistication and style, Artaic credits it's work to the collaborative spirit within the architecture and design community.

The Artaic design team digitally renders the imagery for each mosaic, then robotically transforms the concept into its final form - a mosaic masterpiece. While the creative vision can stem from any inspiration whatsoever, we also provide remarkable design collections to ignite ideas.

Our proprietary modern technology has driven this innovative process. Artaic's state-of-the-art facility is headquartered at The Boston Design Center, where the hub of innovation meets style. To learn more about how Artaic is revolutionizing the mosaic tile industry, visit our website at [artaic.com](http://artaic.com).

# ReSalvage



## THE COLLECTION

ReSalvage mosaic collection explores the concept of reuse through tile patterns and textures of discarded material created in recycled glass tile. The unique mosaic series, which presents stylized motifs of scrap paper, peeling paint, torn cardboard, dismantled pallets, and reclaimed wood, draws inspiration from the recycled tile material itself.

All mosaics are produced to order, and are infinitely customizable by tile type, size, color, and imagery.

# Twine

155"W x 125"H - Does not repeat



0312902 - Twine, Frost



0312903 - Twine, Indigo



0312901 - Twine, Earthen



0312904 - Twine, Kelp



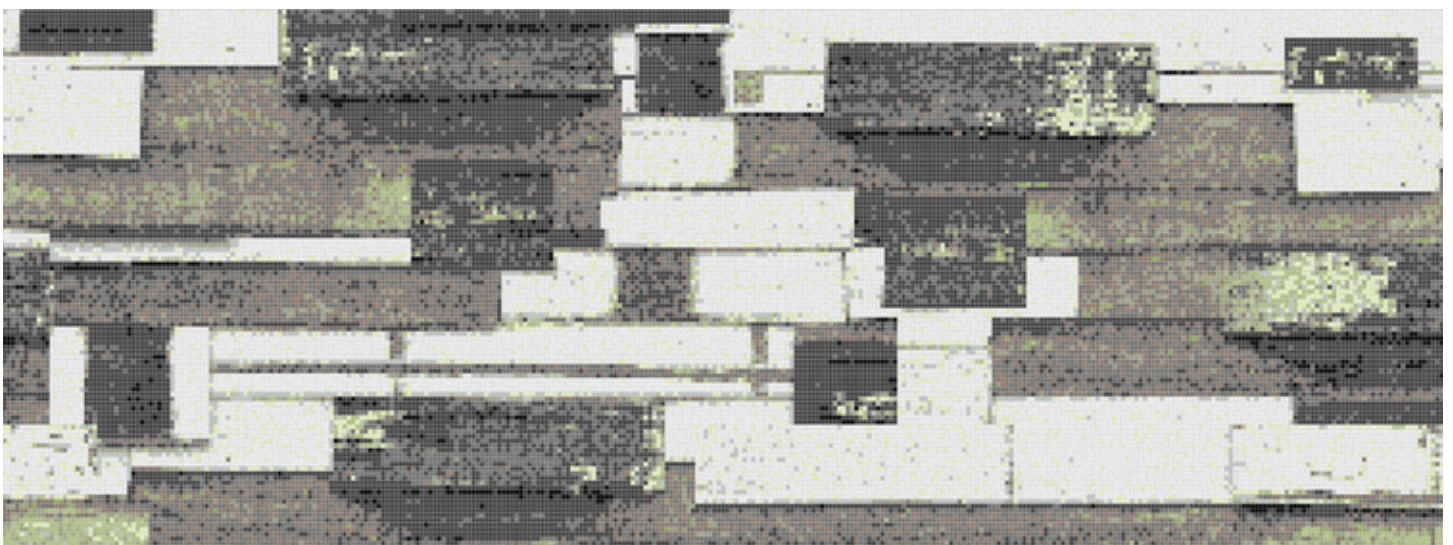
0312906 - Twine, Sepia

# Barnside

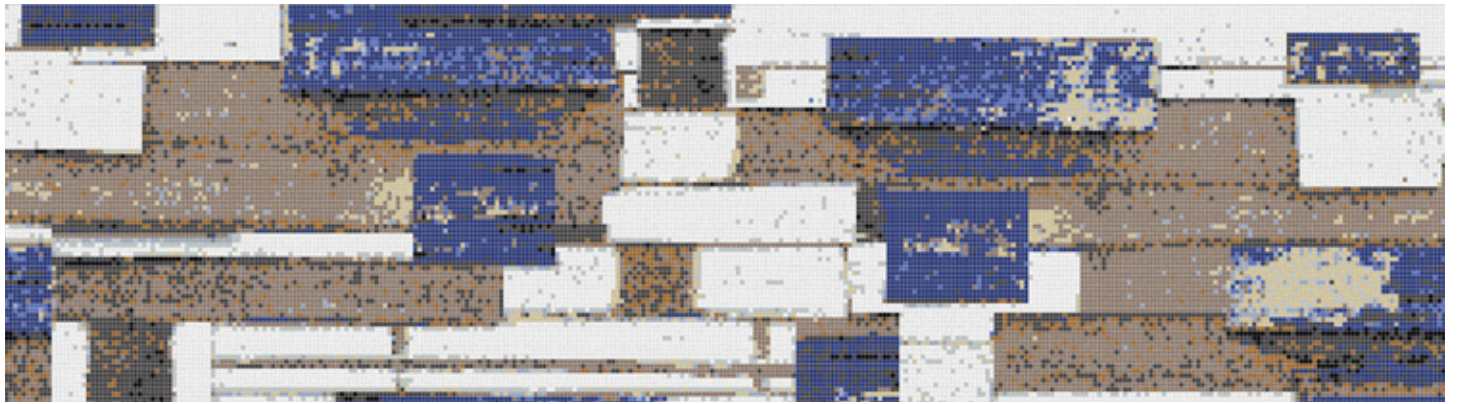
180"W x 120"H - Design Repeats in all directions



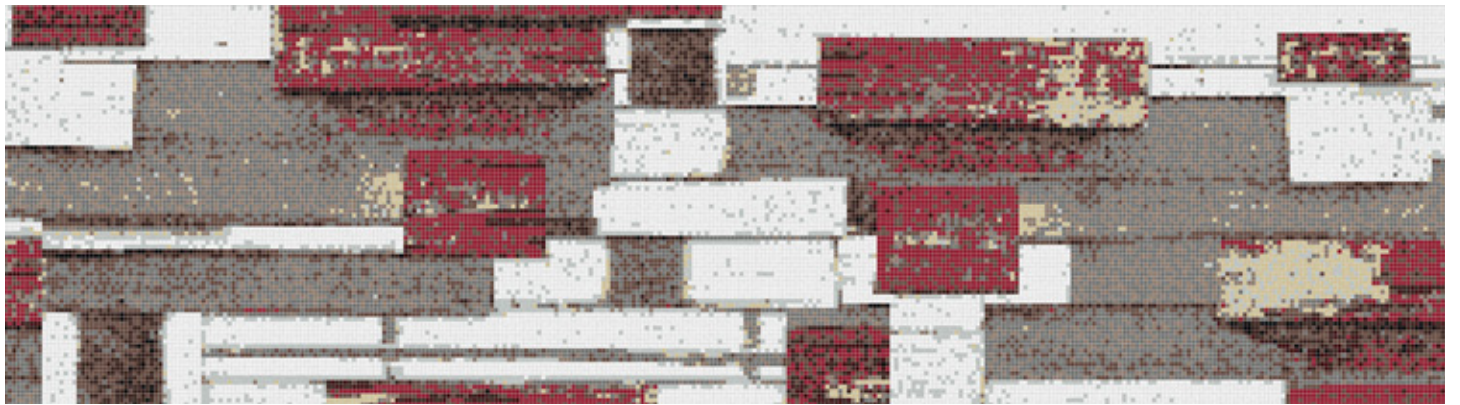
0310104 - Barnside, Virid



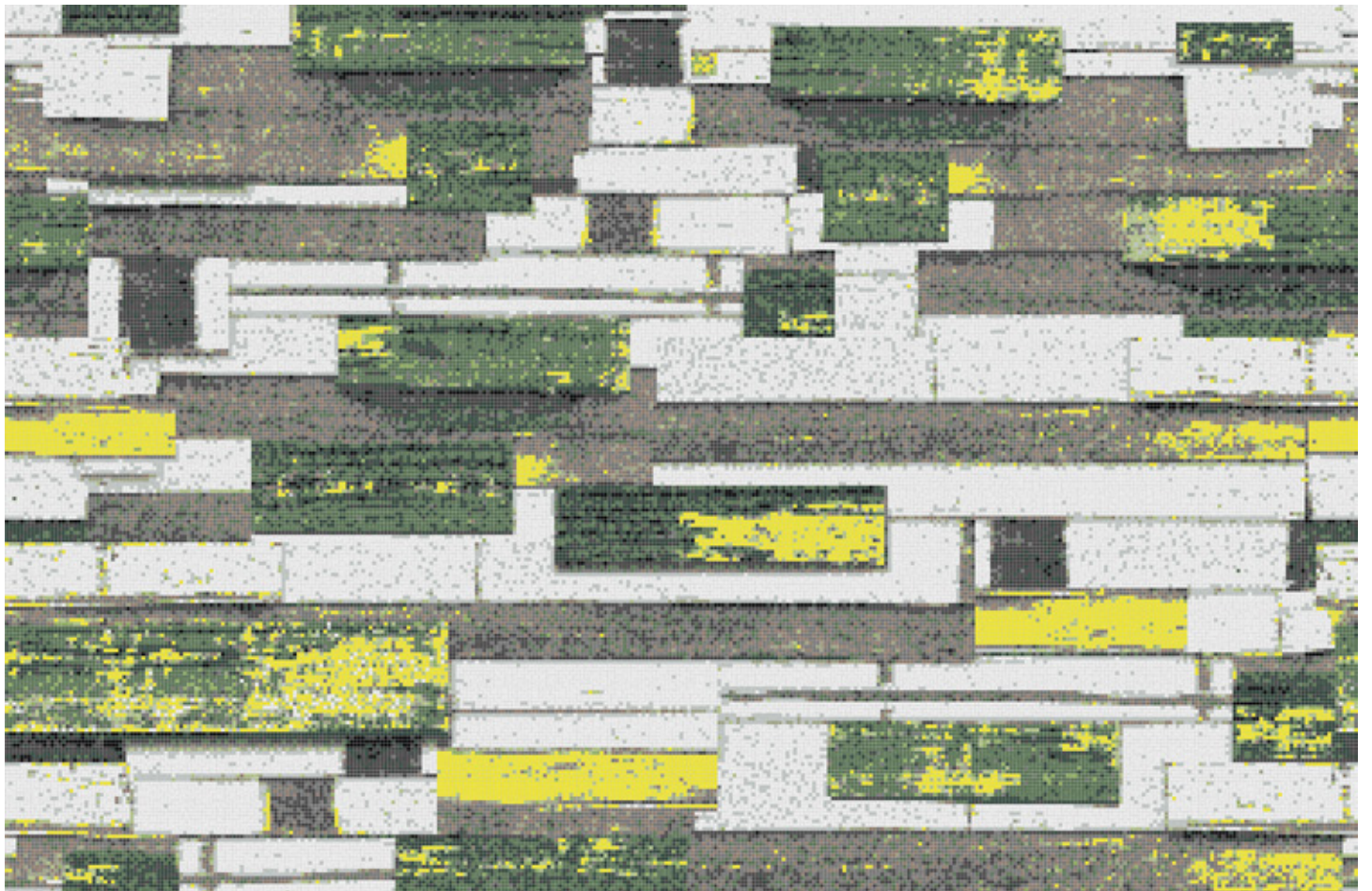
0310104 - Barnside, Virid



0310101- Barnside, Coastal



0310108 - Barnside, Flame



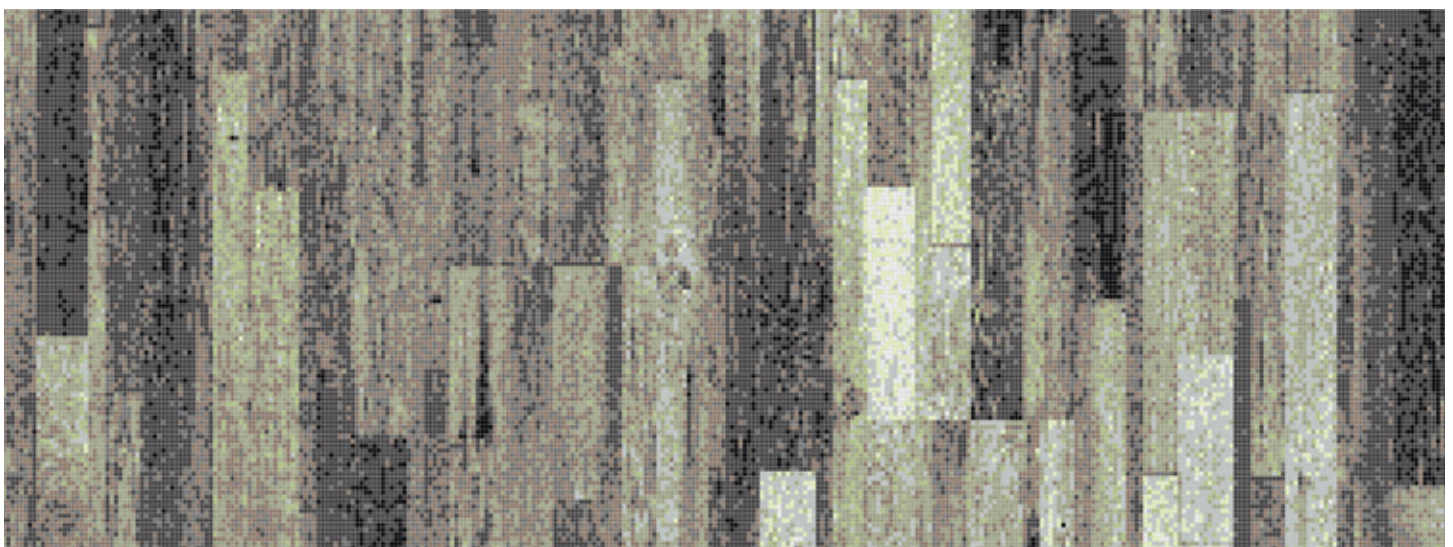
0310109- Barnside, Spring

# Timber

180"W x 120"H - Design Repeats in all directions

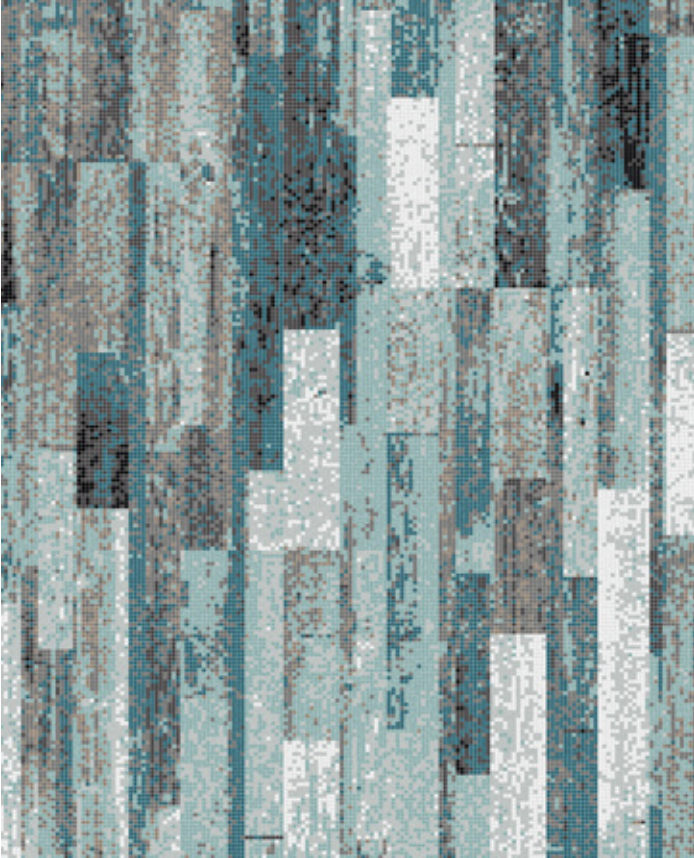


0310203 - Timber, Ash



0310204 - Timber, Virid





0310205 - Timber, Turquoise



0310202 - Timber, Eathern



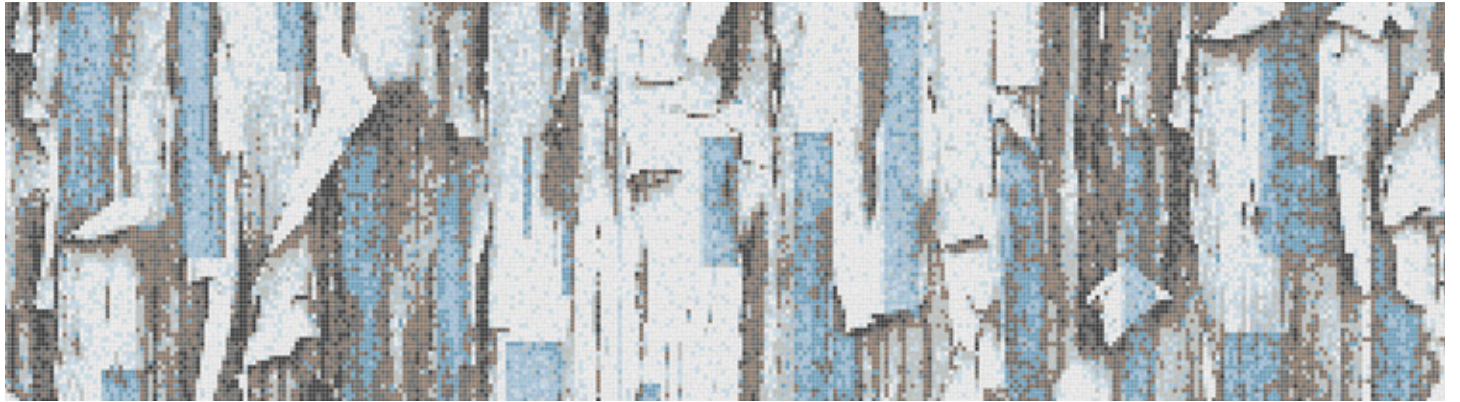
0310210 - Timber, Frost

# Timestold

180"W x 120"H - Design Repeats in all directions



0310408 - Timestold, Spring



0310410 - Timestold, Frost



0310405 - Timestold, Turquoise



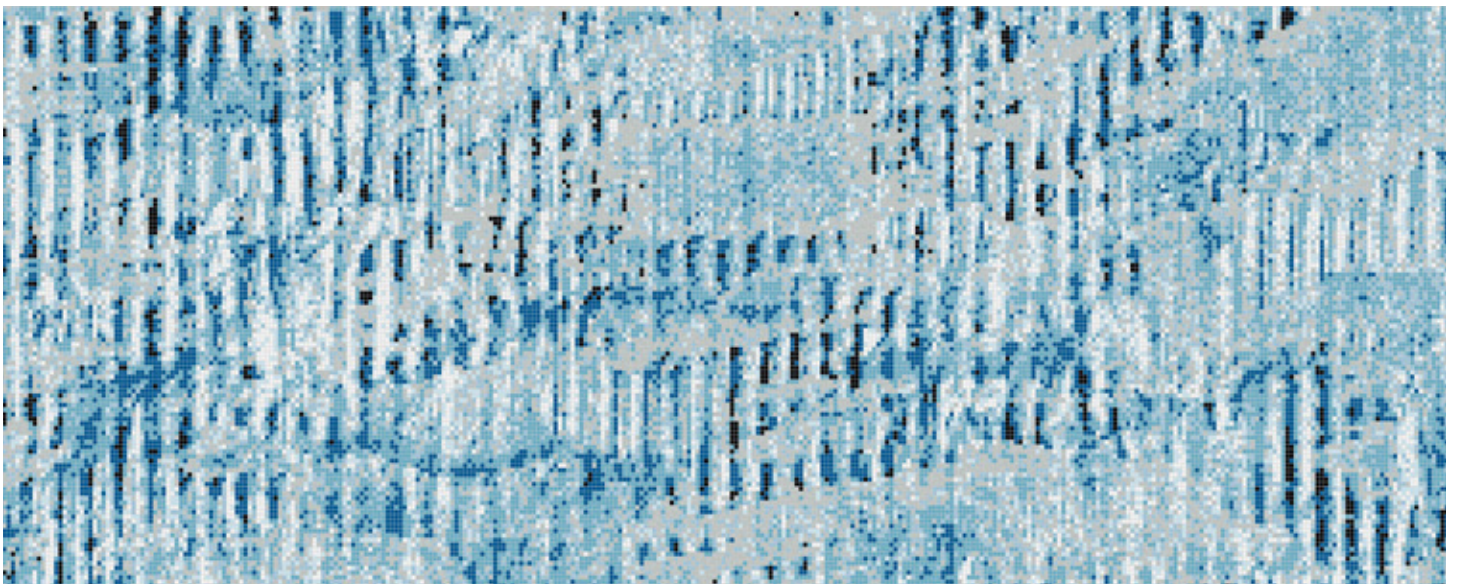
0310408 - Timestold, Flame

# Corrugated

180"W x 120"H - Design Repeats in all directions



0310813 - Corrugated, Lavender



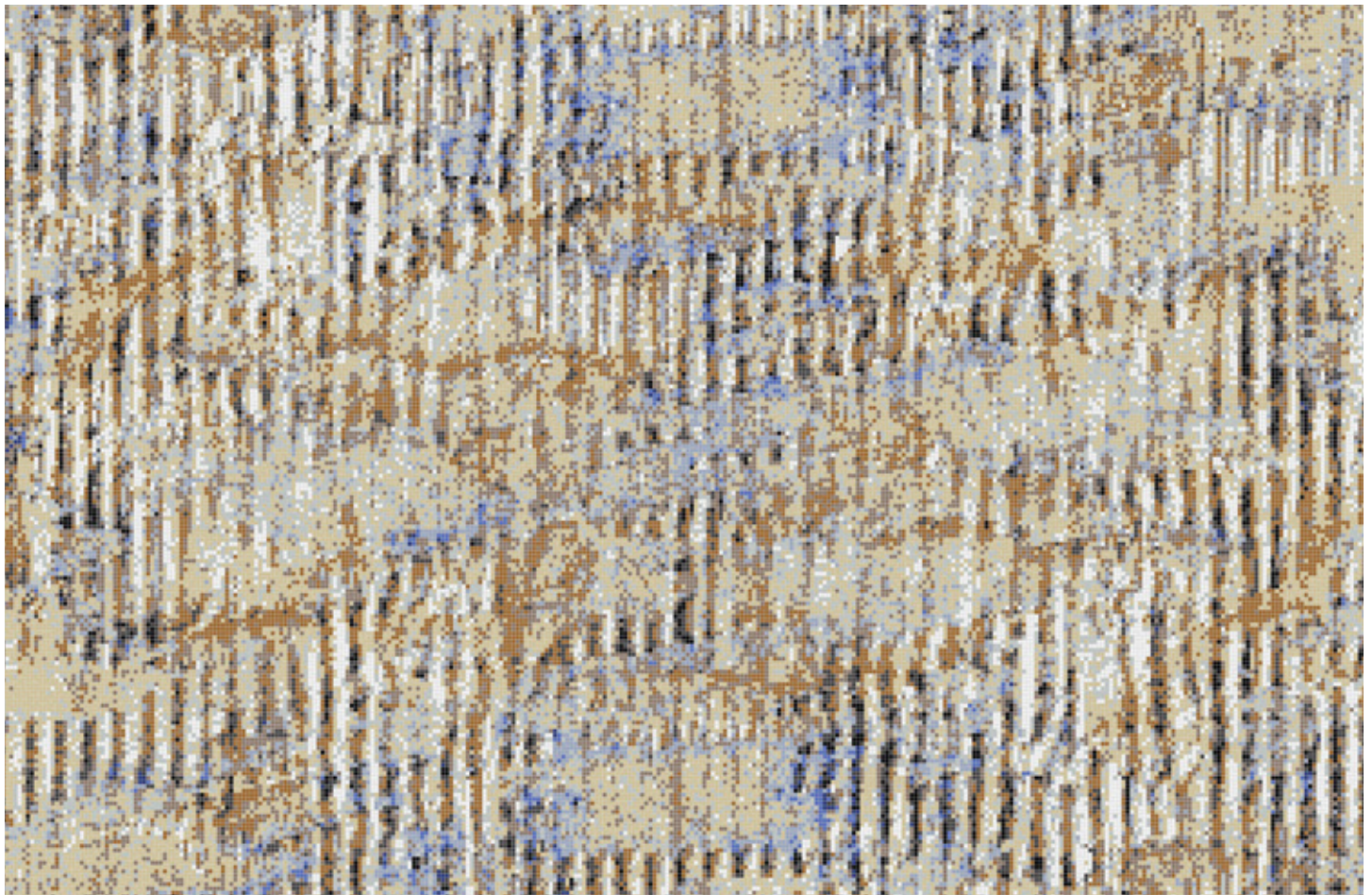
0310806 - Corrugated, Lake



0310805 - Corrugated, Turquoise



0310804 - Corrugated, Virid



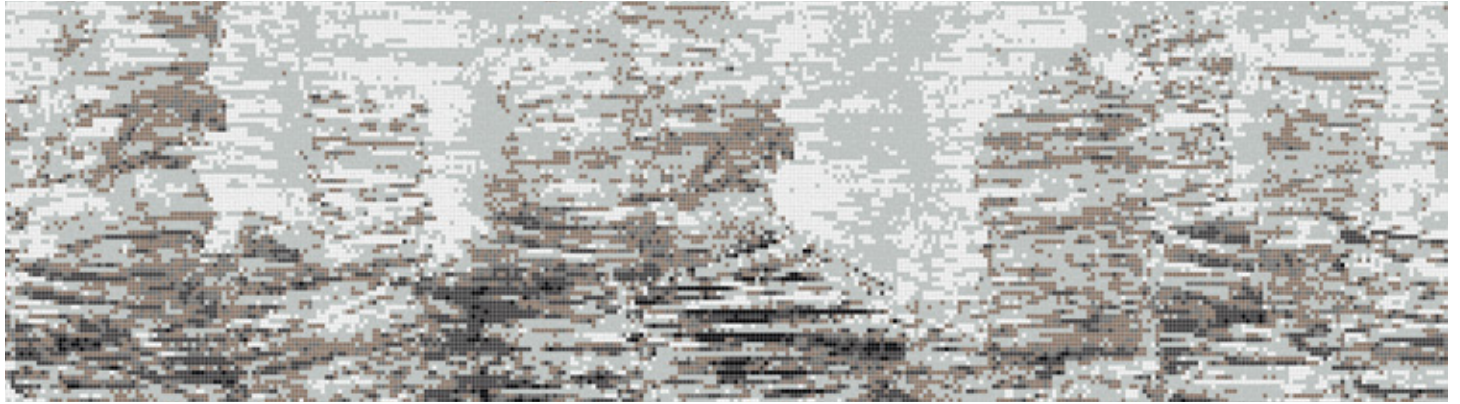
0310801 - Corrugated, Coastal

# Newstack

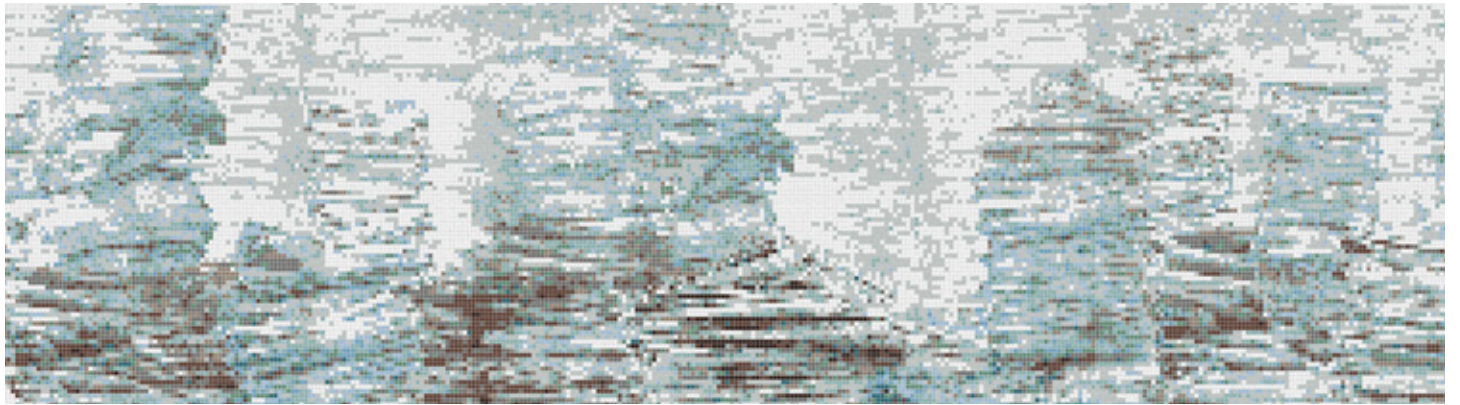
180"W x 120"H - Design Repeats in all directions



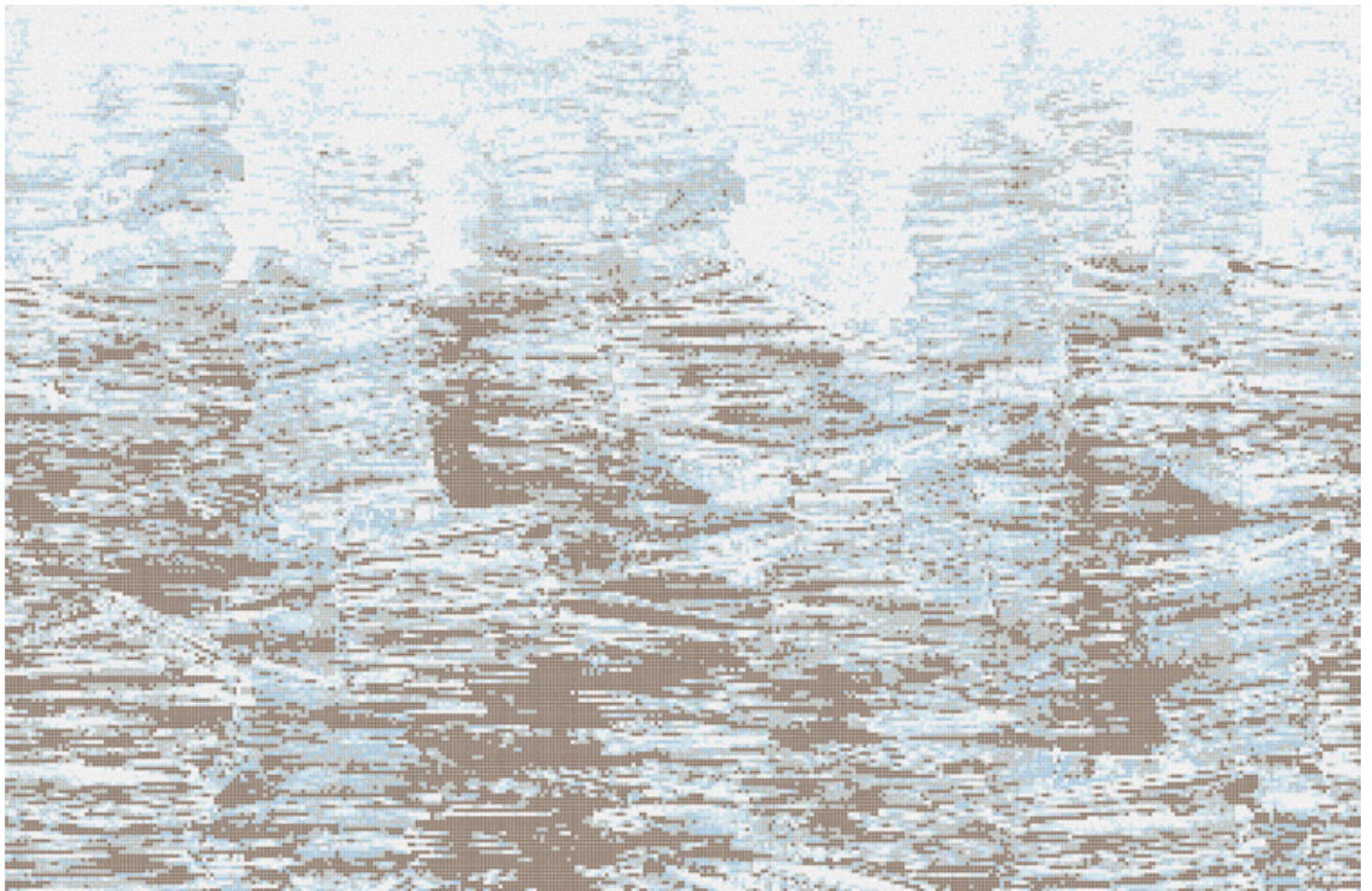
0312102 - Newstack, Earthen



0312103 - Newstack, Ash



0312105 - Newstack, Turquoise



0312110 - Newstack, Frost

# Endcut

180"W x 120"H - Design Repeats in all directions



0310305 - Endcut, Turquoise

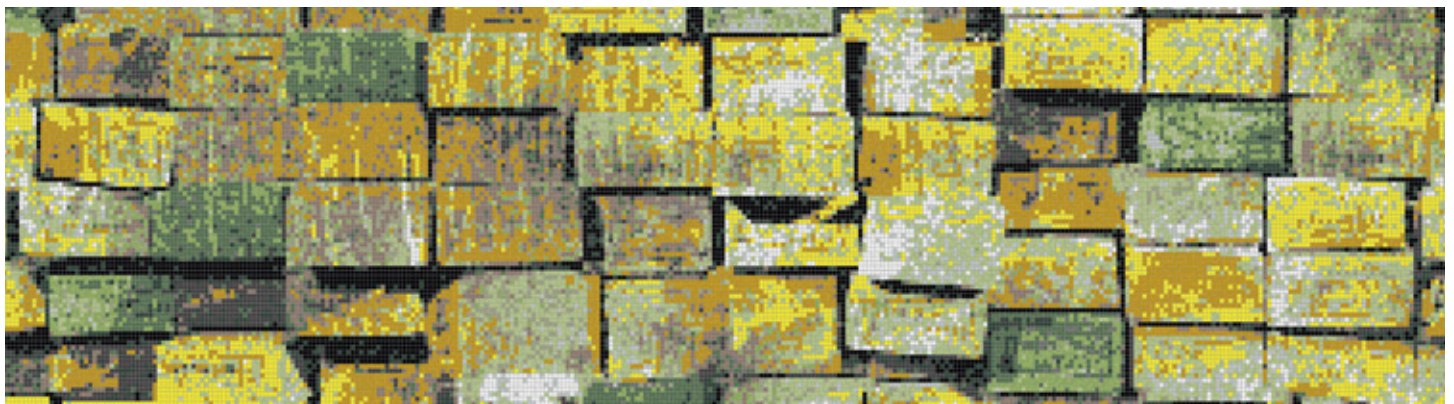


0310302 - Endcut, Earthen

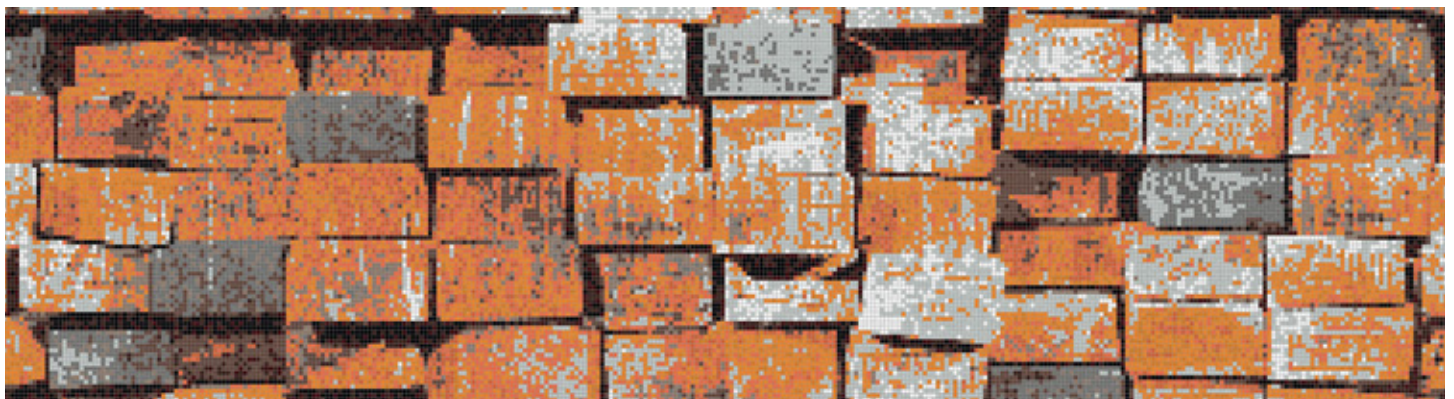




0310306 - Endcut, Lake



0310309 - Endcut, Spring



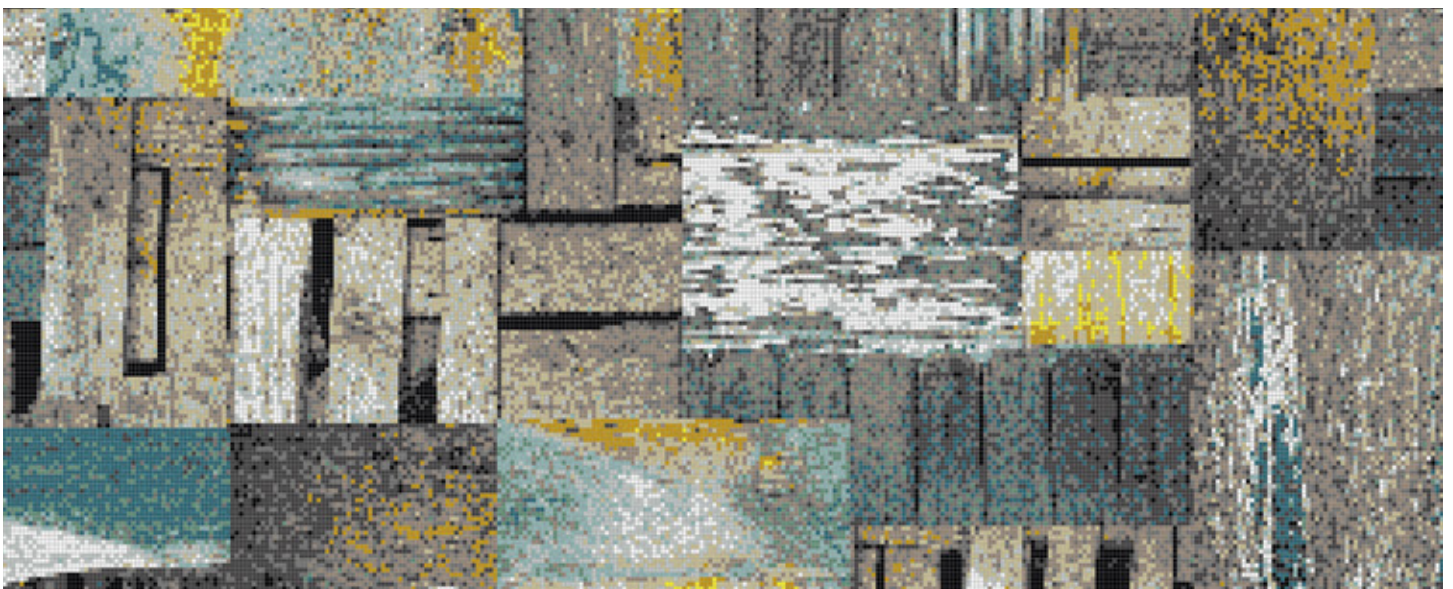
0310311 - Endcut, Tangerine

# Weathered

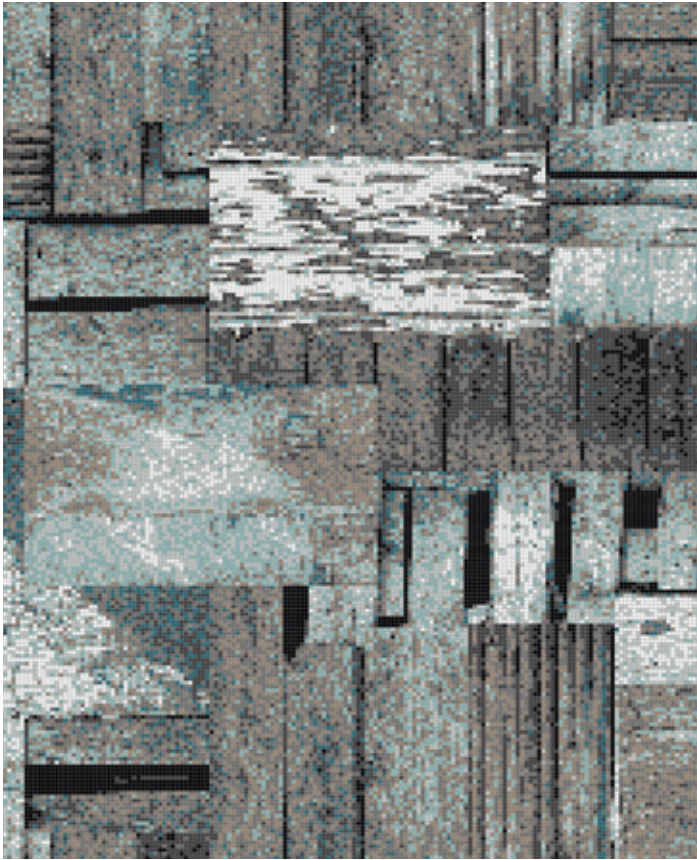
180"W x 120"H - Design Repeats in all directions



0312210 - Weathered, Frost



0312212 - Weathered, Beachfront



0312205 - Weathered, Turquoise



0312202 - Weathered, Earthen



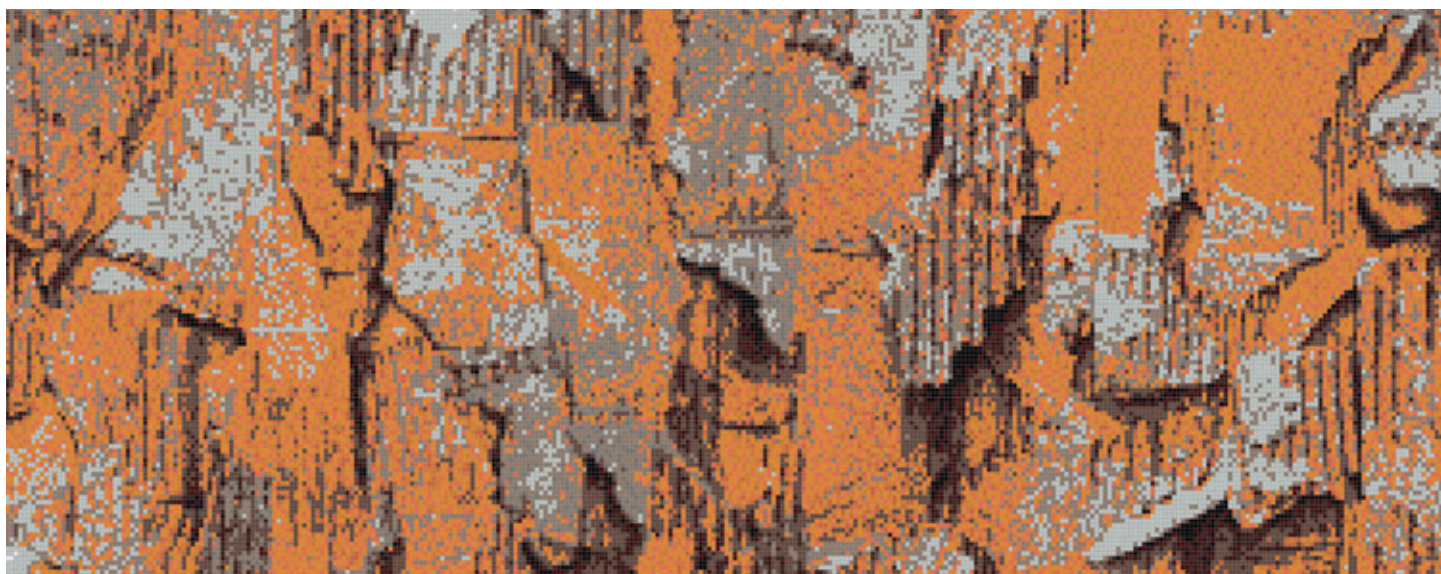
0312201 - Weathered, Coastal

# Corcabo

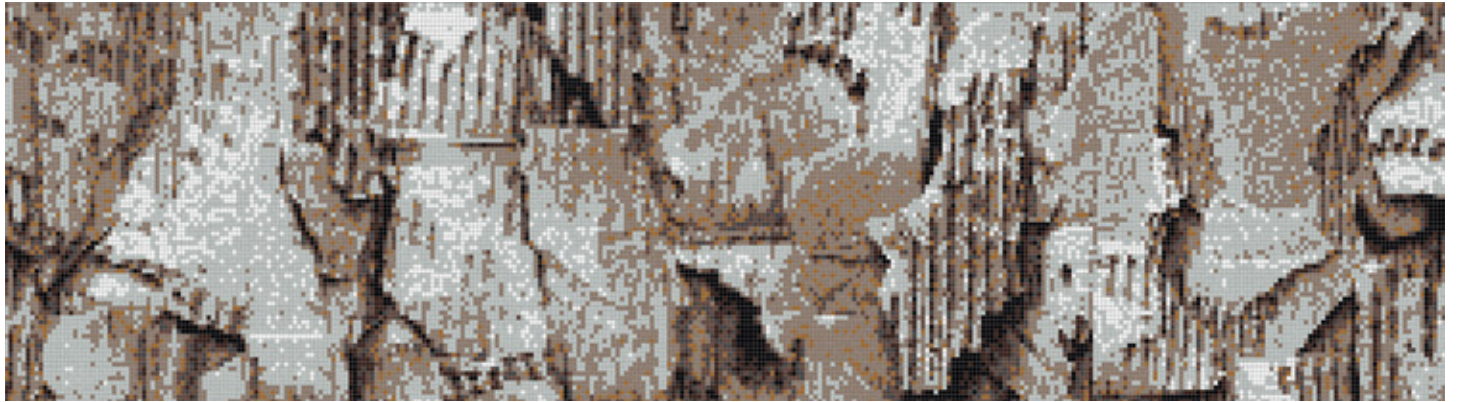
180"W x 120"H - Design Repeats in all directions



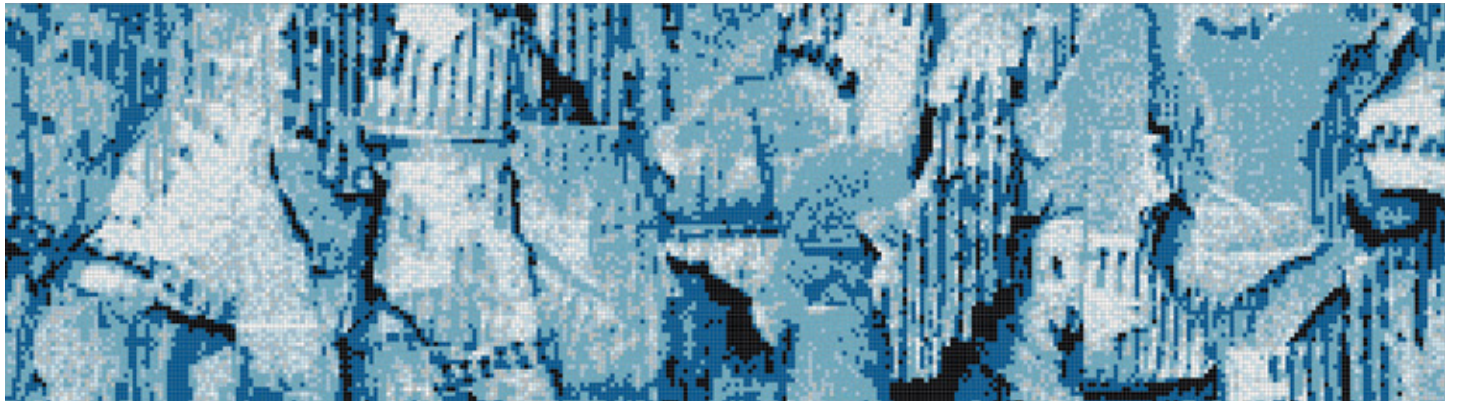
0312609 - Corcabo, Spring



0312611 - Corcabo, Tangerine



0312602 - Corcabo, Earthen



0312606 - Corcabo, Lake



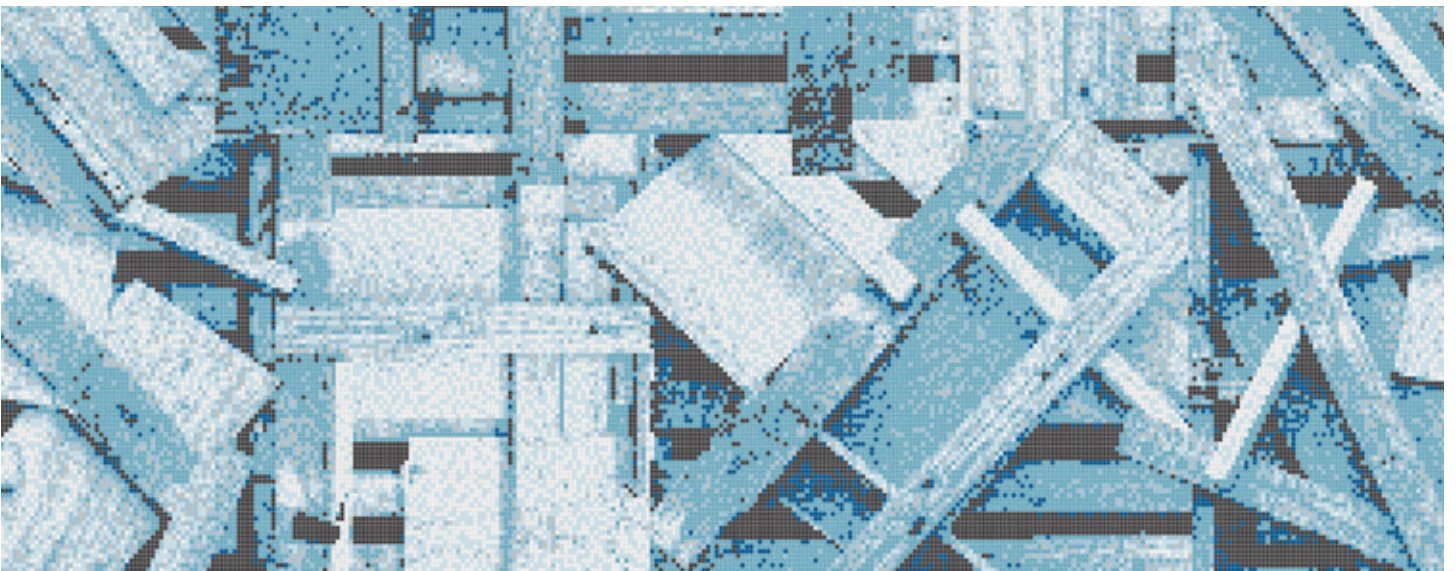
0312603 - Corcabo, Ash

# Windblown

180"W x 120"H - Design Repeats in all directions



0312812 - Windblown, Beachfront



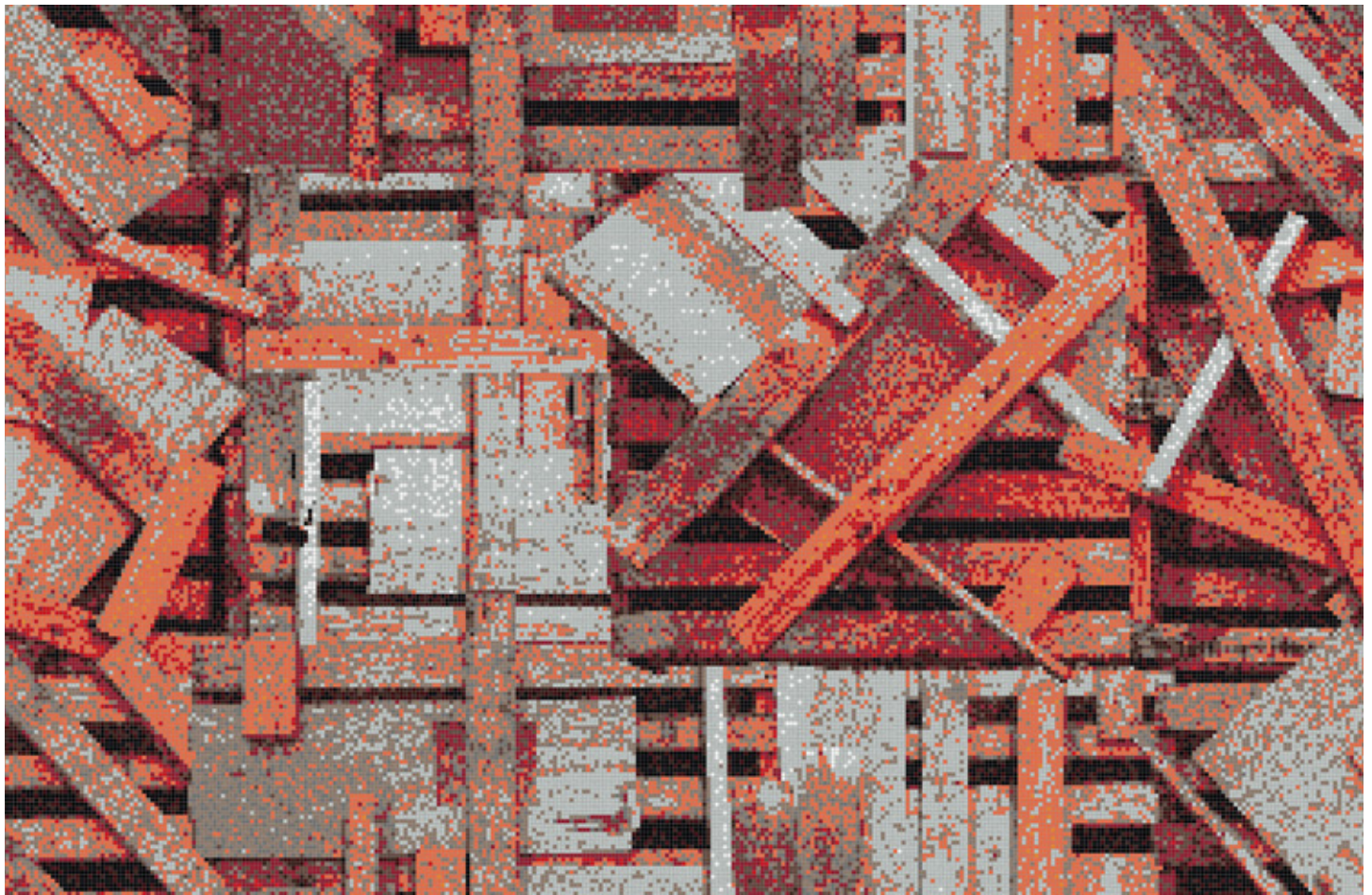
0312806 - Windblown, Lake



0312810 - Windblown, Frost



0312803 - Windblown, Ash



0312808 - Windblown, Flame



# THE URBN COLLECTION



AFH artist, Lexi Zotov, uses Artaic's Tylist™ design software to transform her original artwork into a mosaic mural for the URBN Collection.

High contrast abstract patterns make up URBN - a bold mosaic collection that celebrates Boston's urban youth. Artaic, in collaboration with local non-profit **Artists For Humanity (AFH)**, uses design technology to transform teen artists' original artwork into mosaic murals.

**AFH** receives a royalty from any URBN design that is produced. The purchase of your mosaic will directly benefit teen artists!

Since its founding in 1991, **Artists for Humanity (AFH)** has used art and design to bridge economic, racial, and social divides by providing creative training, mentorship, and paid employment opportunities to underserved urban youth. **AFH** grew from an unconventional idea that young people can provide contemporary creative services to the business community. **AFH** employs 250+ Boston teens annually.

To see more designs and colorways from this collection, visit [Artaic.com/URBN](http://Artaic.com/URBN).



0305403 - URBN Collection:  
Cityscape, Mist



# By Artists for Humanity



0304402 - URBN Collection:  
Kindling, Cerulean



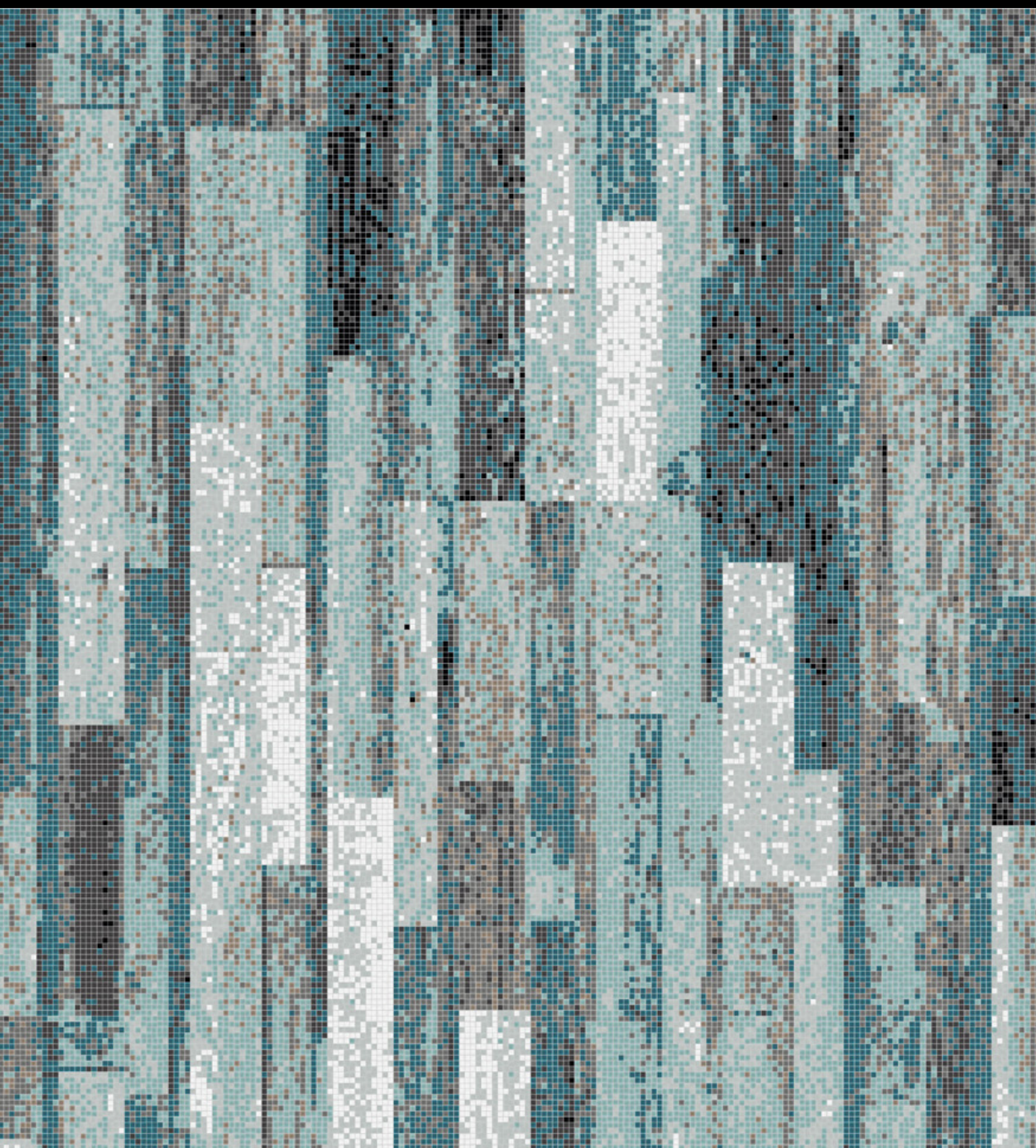
0304401 - URBN Collection:  
Kindling, Ruby



0304404 - URBN Collection:  
Kindling, Magma



0304403 - URBN Collection:  
Kindling, Earthen



[info@artaic.com](mailto:info@artaic.com) | [artaic.com](http://artaic.com) | +1.617.418.1928

Federal law provides severe civil penalties for the unauthorized reproduction or distribution or exhibition of this copyrighted work. Copyright infringement, including infringement without monetary gains, is illegal and can result in penalties of up to \$250,000 for each copyrighted work. Artaic LLC has the exclusive right, title and interest in the copyrighted material. Artaic LLC does not grant or convey any intellectual property rights, including but not limited to, the right to copy, reproduce, prepare derivative works, or distribute the copyrighted material without the express written consent of Artaic LLC. Any violation to the above terms is strictly prohibited. ALL RIGHTS RESERVED.