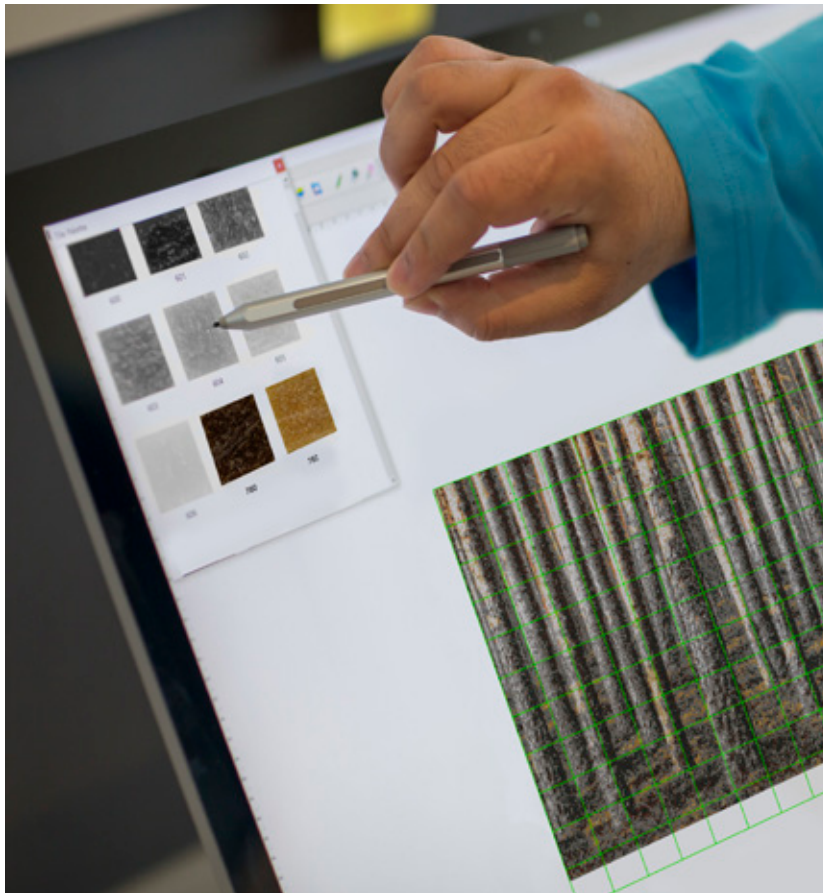




Naturally Refined

Featuring 3/8" Vitreous Glass tile.
Also available in 3/4" Vitreous Glass,
Sintered Glass, and Natural Stone.



THE PROCESS

Artaic's award-winning mosaics can be found around the globe, enhancing the design of spaces large and small. Discover this versatile solution for interiors and exteriors that can play well with traditional or modern, classic or contemporary. Whether it's a stunning showpiece making a bold statement, or a subtle undertone of sophistication and style, Artaic credits it's work to the collaborative spirit within the architecture and design community.

The Artaic design team digitally renders the imagery for each mosaic, then robotically transforms the concept into its final form - a mosaic masterpiece. While the creative vision can stem from any inspiration whatsoever, we also provide remarkable design collections to ignite ideas.

Our proprietary modern technology has driven this innovative process. Artaic's state-of-the-art facility is headquartered at The Boston Design Center, where the hub of innovation meets style. To learn more about how Artaic is revolutionizing the mosaic tile industry, visit our website at artaic.com.

Naturally Refined



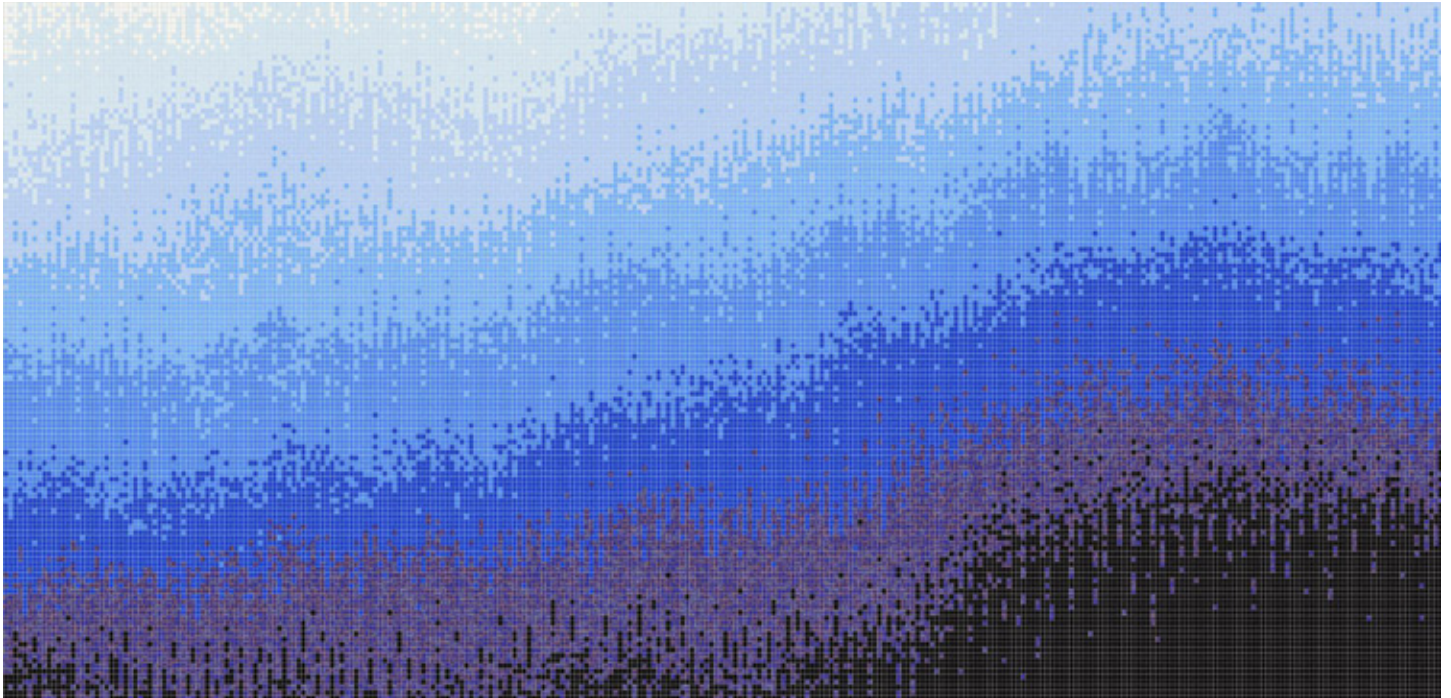
THE COLLECTION

This unique series, which presents stylized motifs of bark, the movement of water, and cloud formations, draws inspiration from nature's details. 'Naturally Refined' offers fully customizable designs that examine the beauty of nature through the abstract.

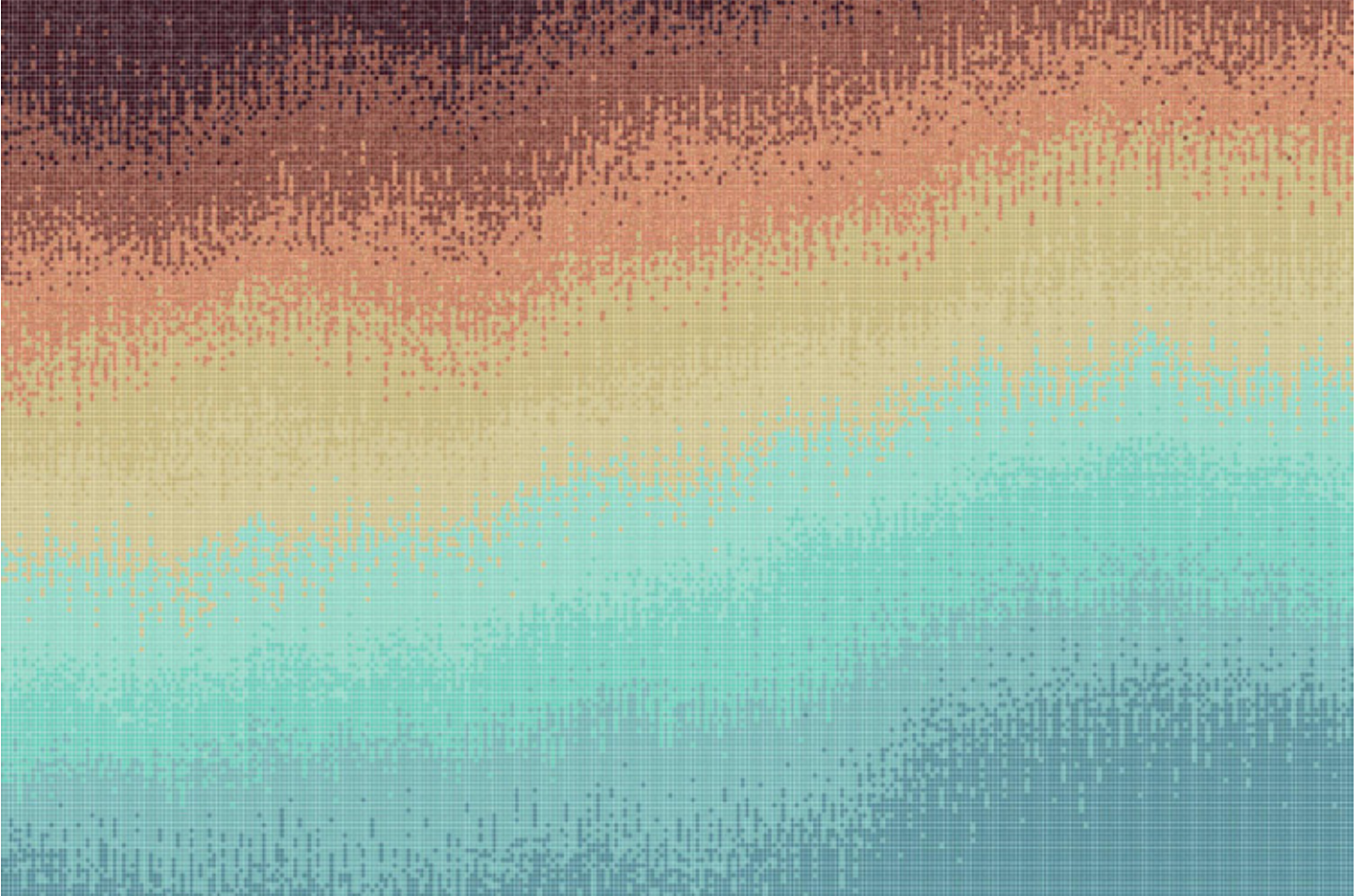
All mosaics are produced to order, and are infinitely customizable by tile type, size, color, and imagery.

Sediment

180"W x 120"H



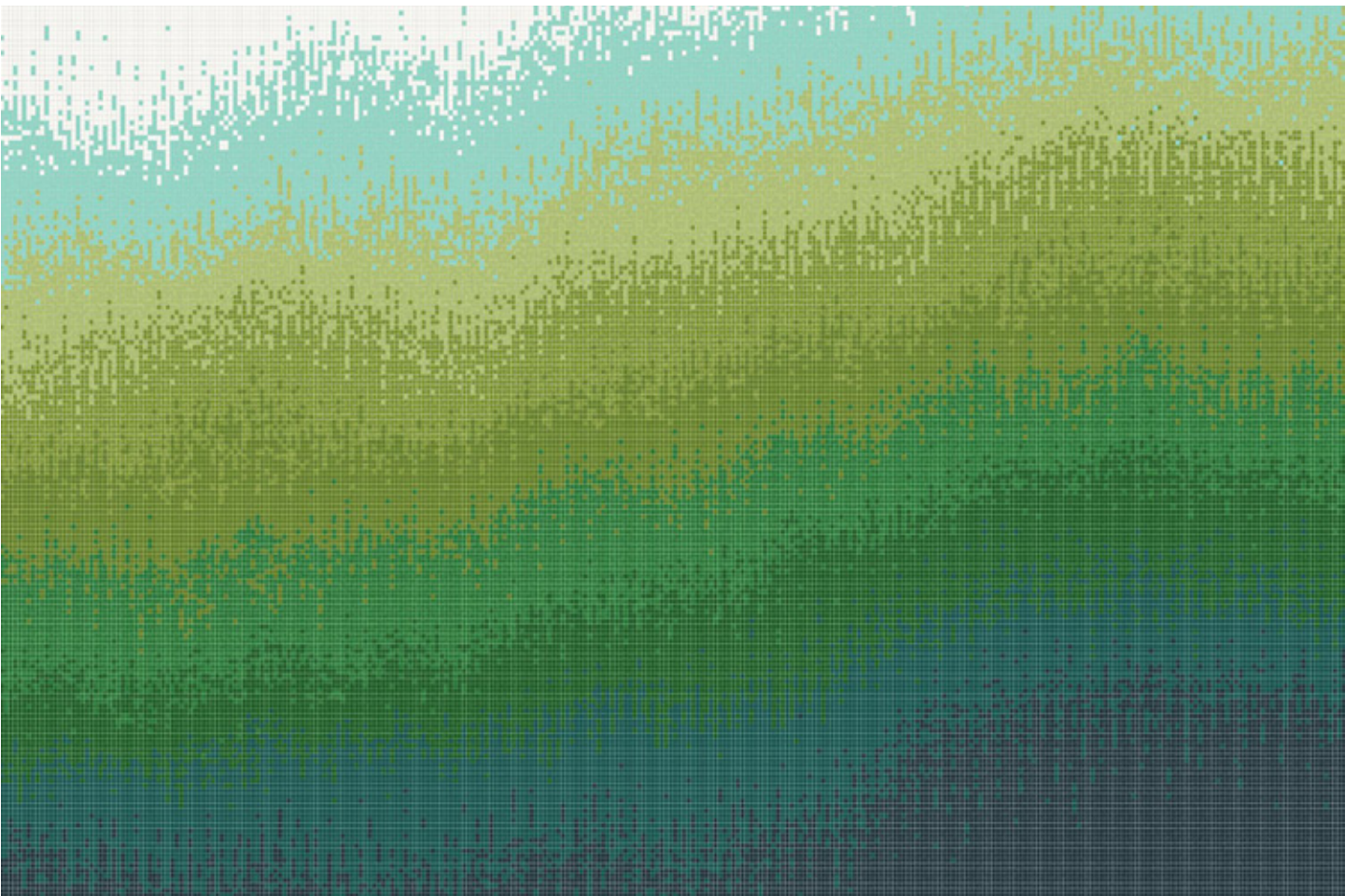
0121703 - Sediment, Glacier



0121706 - Sediment, Beachfront



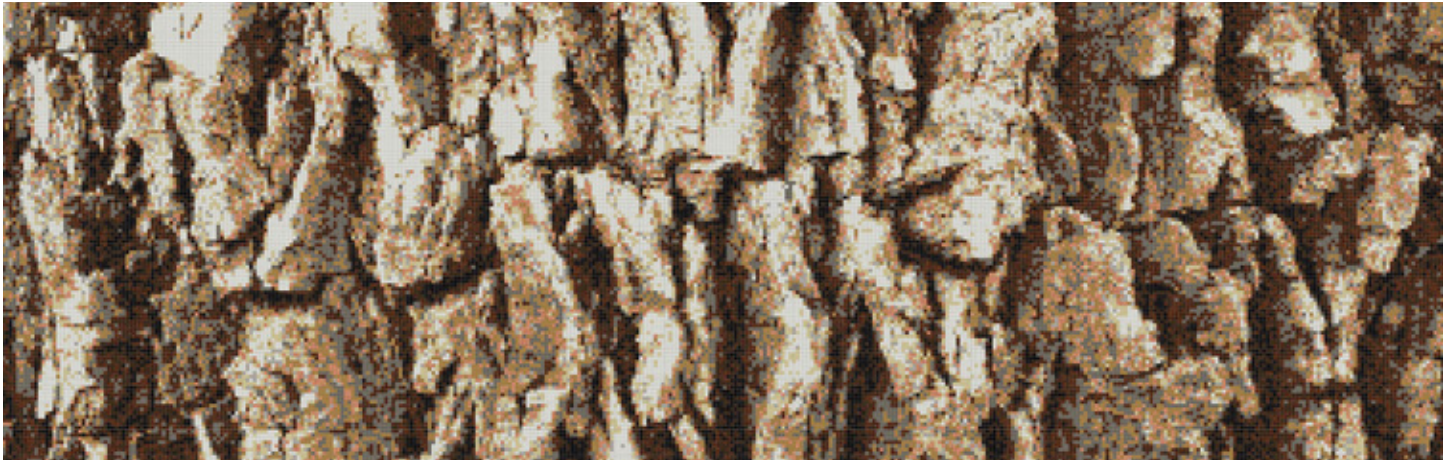
0121705 - Sediment, Canyon



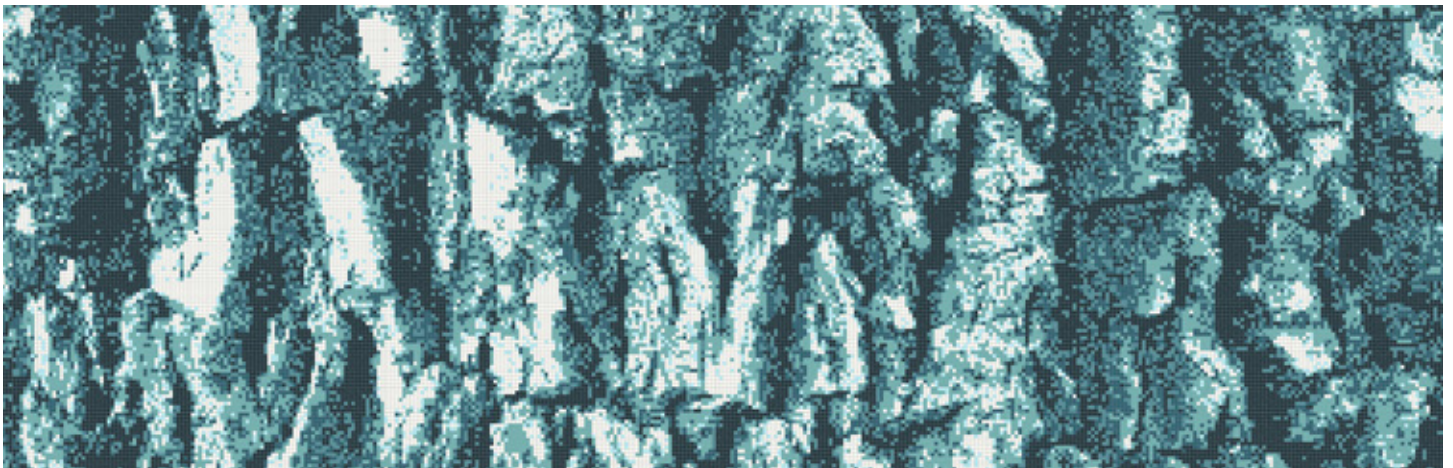
0121704 - Sediment, Lagoon

Conifera

180"W x 120"H



0120103 - Conifera, Sierra



0120104 - Conifera, Submerge



0120101 - Conifera, Titanium

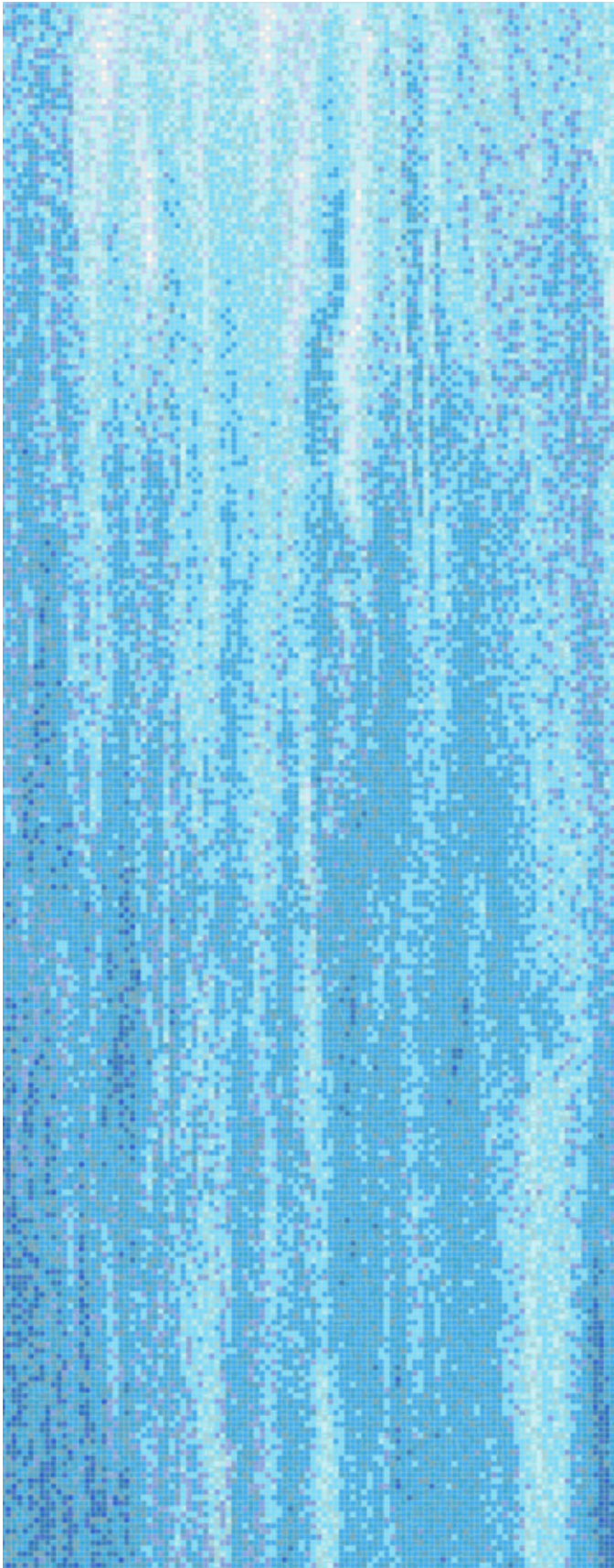


0120103 - Conifera, Sierra

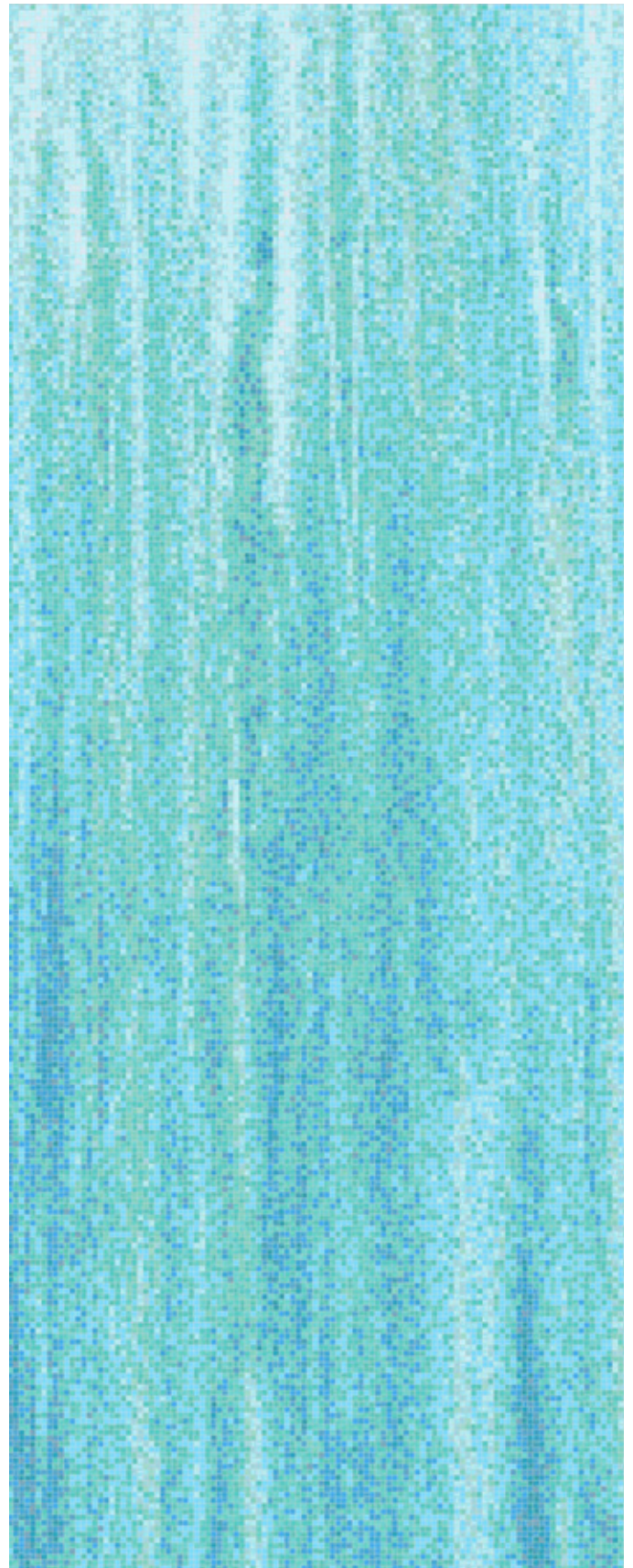


Waterflow

180"W x 120"H



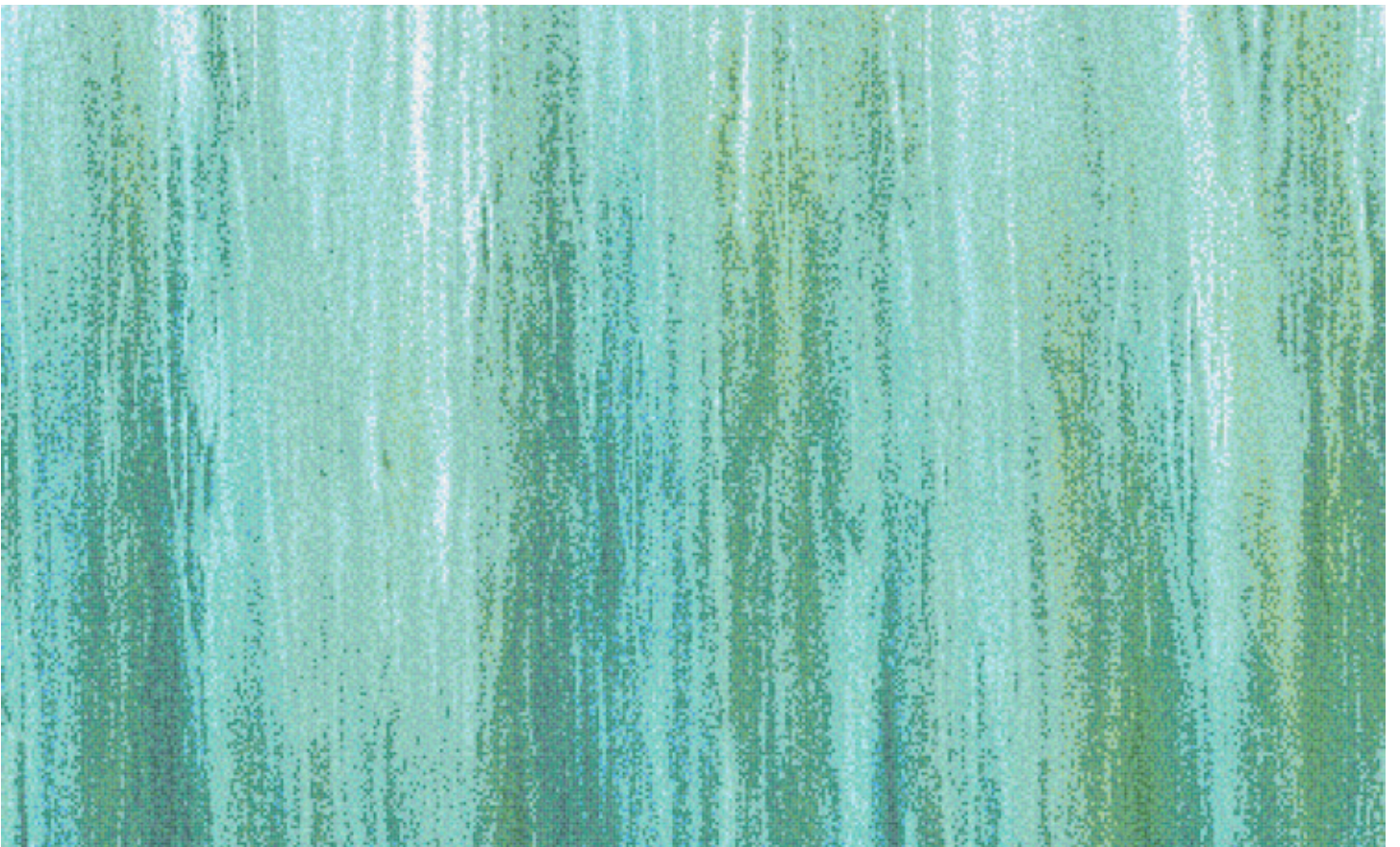
0121401 - Waterflow, Lake



0121402 - Waterflow, Cove



0121404 - Waterflow, Titanium



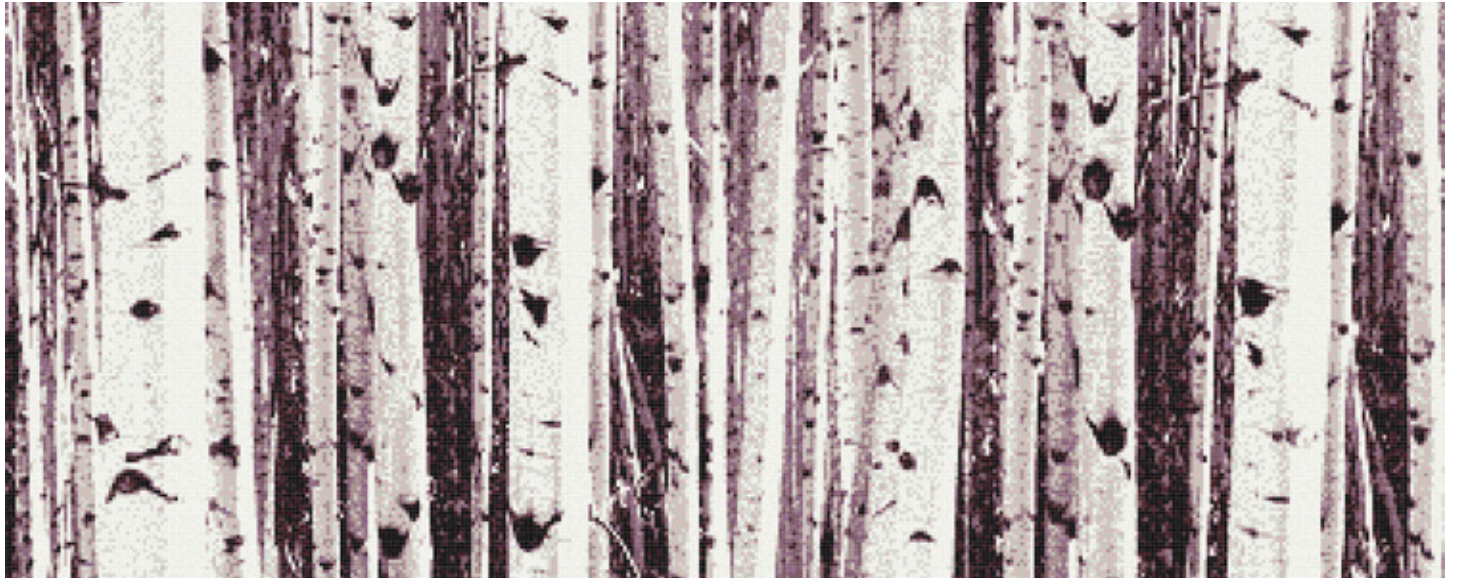
0121403 - Waterflow, Everglade

Aspen

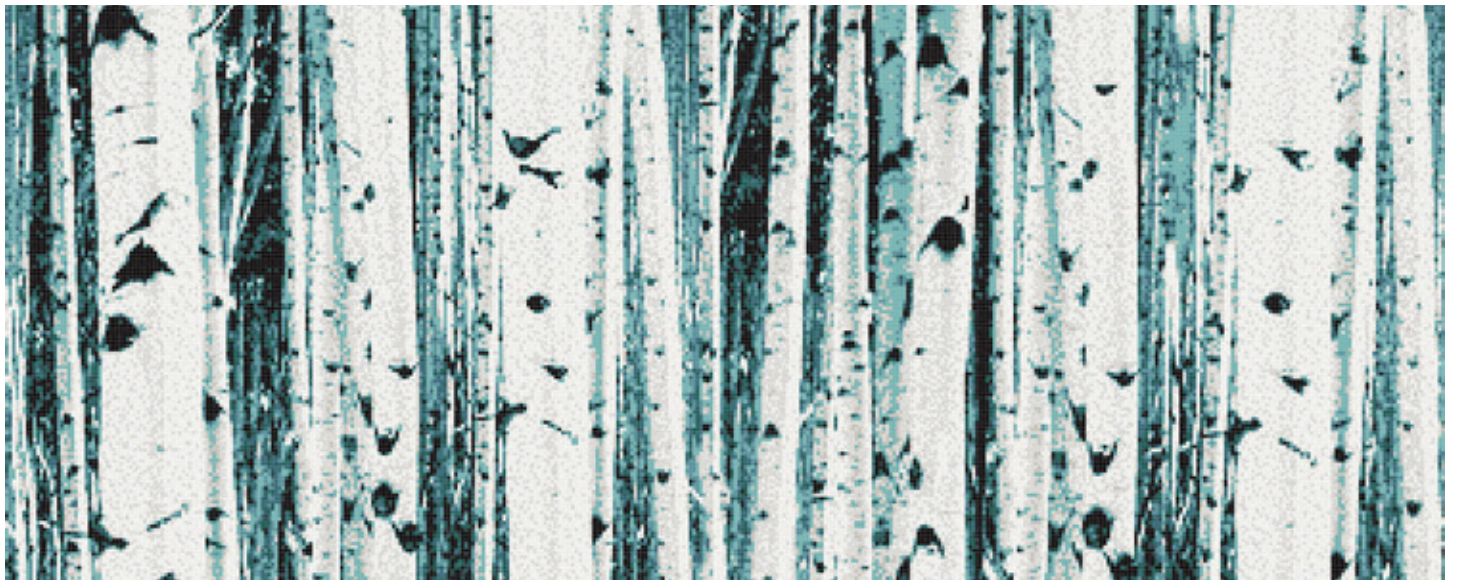
180"W x 120"H



0121601 - Aspen, Titanium



0121602 - Aspen, Lavender



0121603 - Aspen, Turquoise



0121604 - Aspen, Sierra

Chell

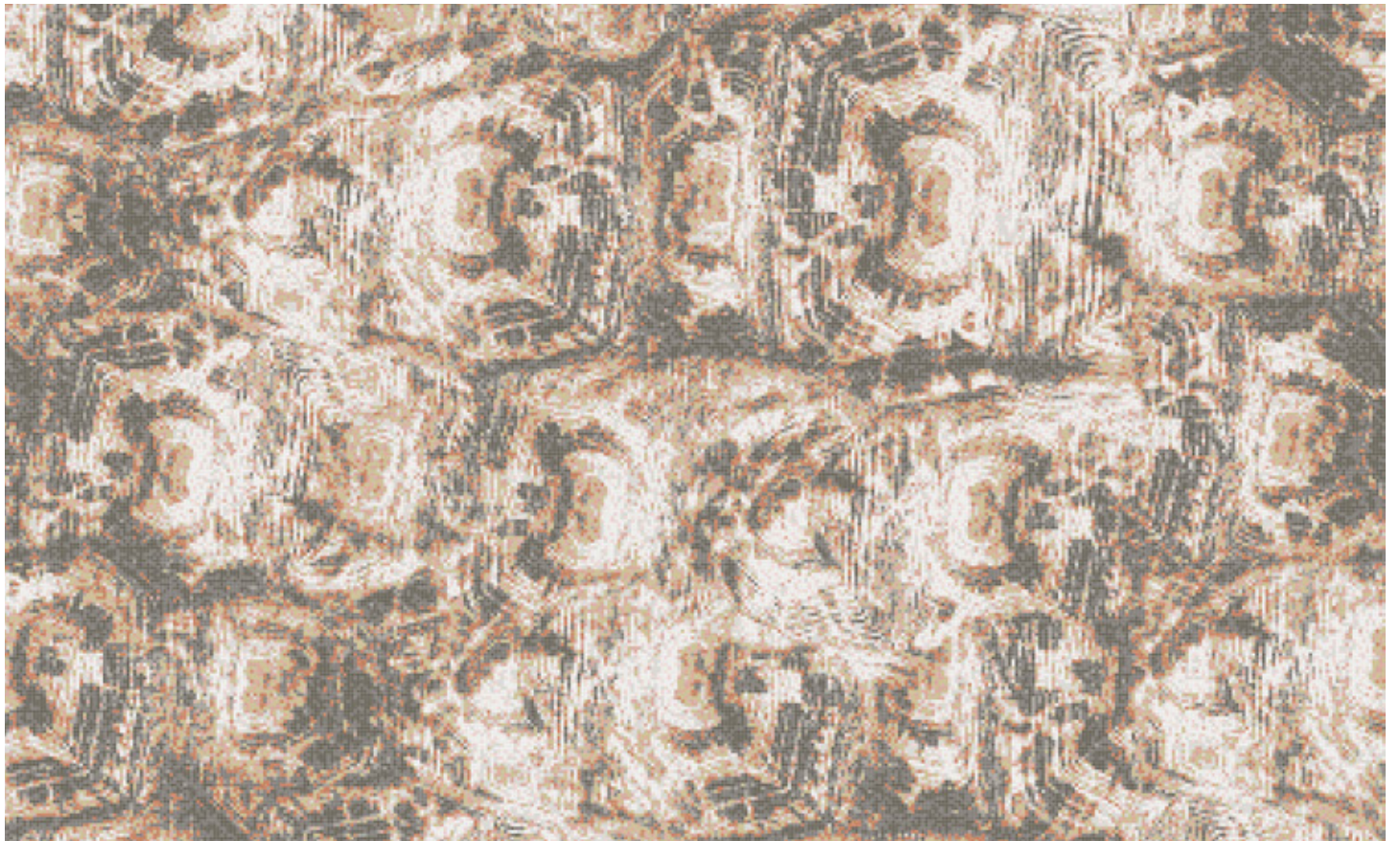
180"W x 120"H



0120201 - Chell, Golden Ember



0120202 - Chell, Shimmering Sand



0120203 - Chell, Sandstone



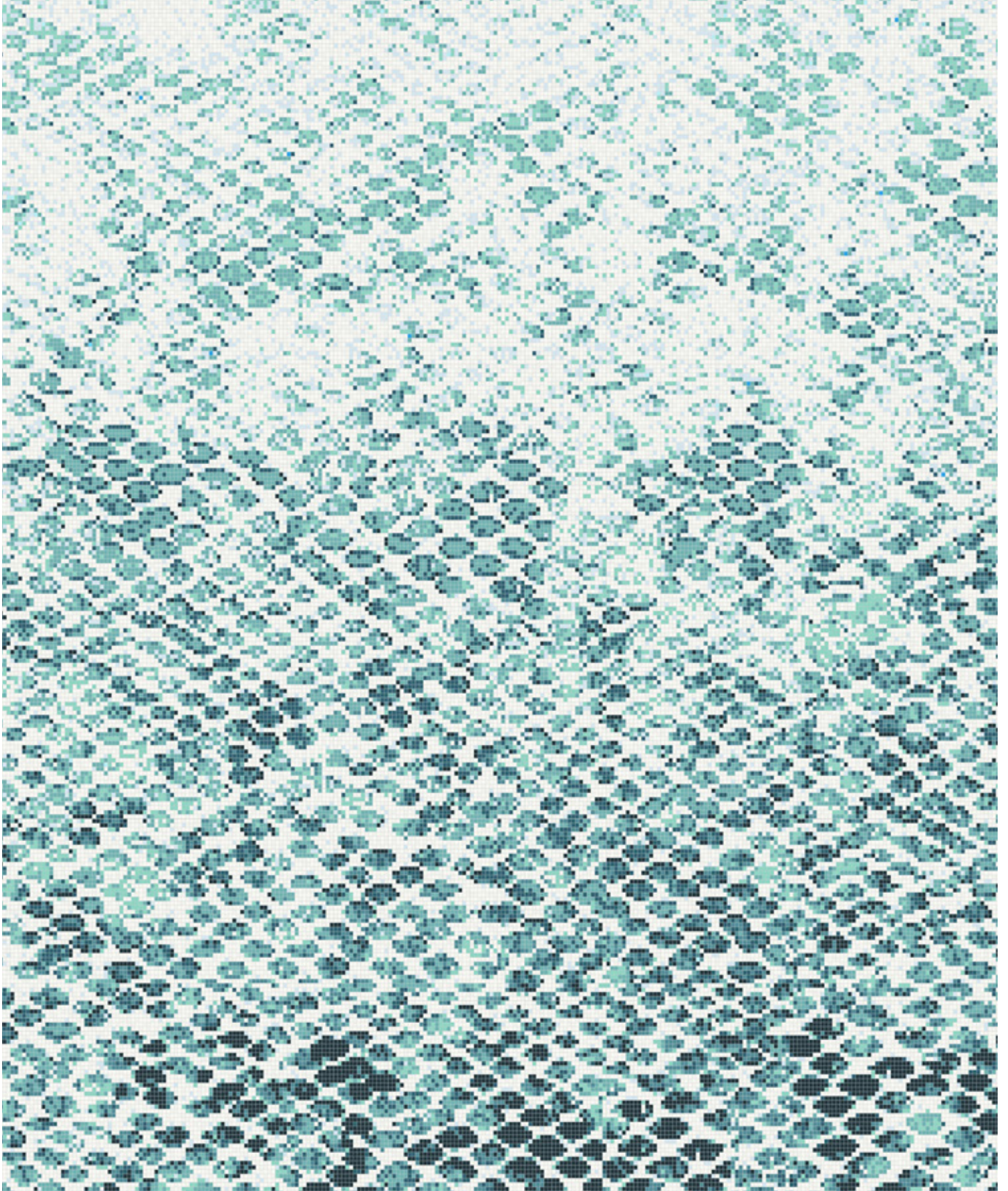
0120205 - Chell, Sierra



0120204 - Chell, Midnight

Hydrus

180"W x 120"H





0120301 - Hydrus, Golden Ember



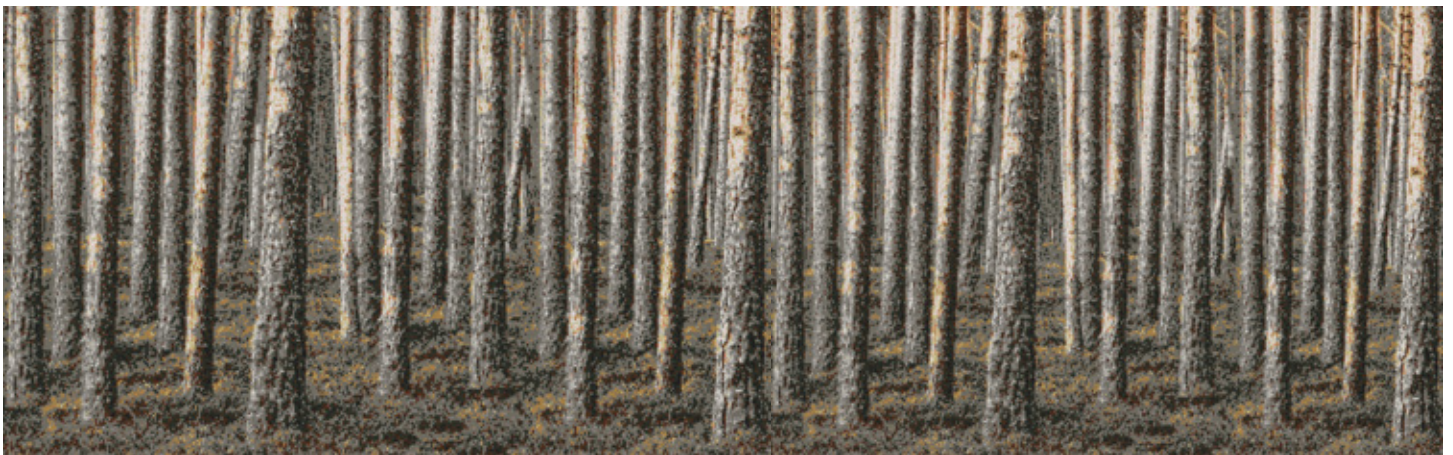
0120302 - Hydrus, Tangerine

Woodspire

180"W x 120"H



0120704 - Woodspire, Sierra



0120701 - Woodspire, Java



0120702 - Woodspire, Turquoise

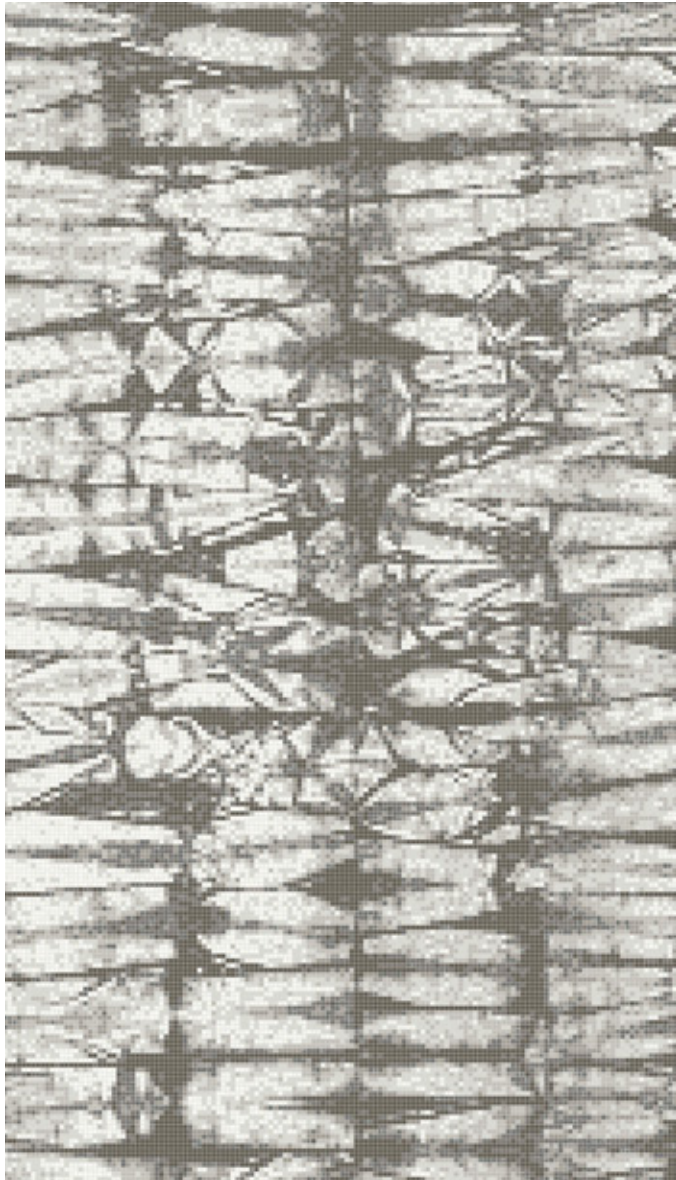


Regeneration

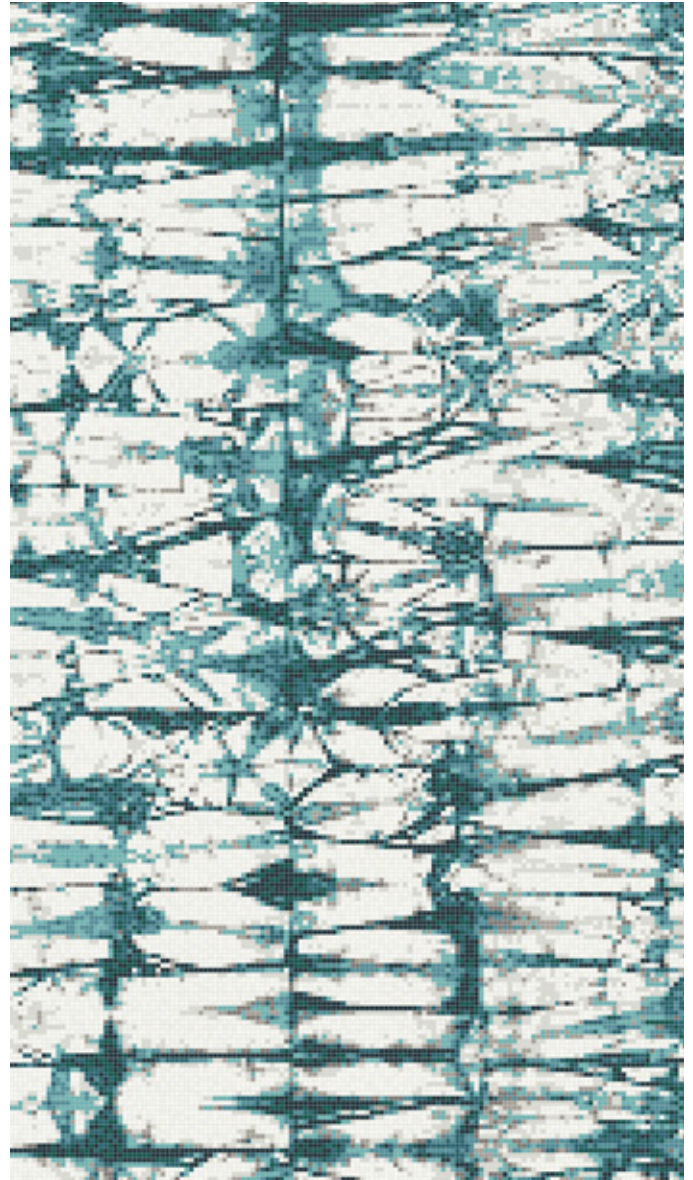
180"W x 120"H



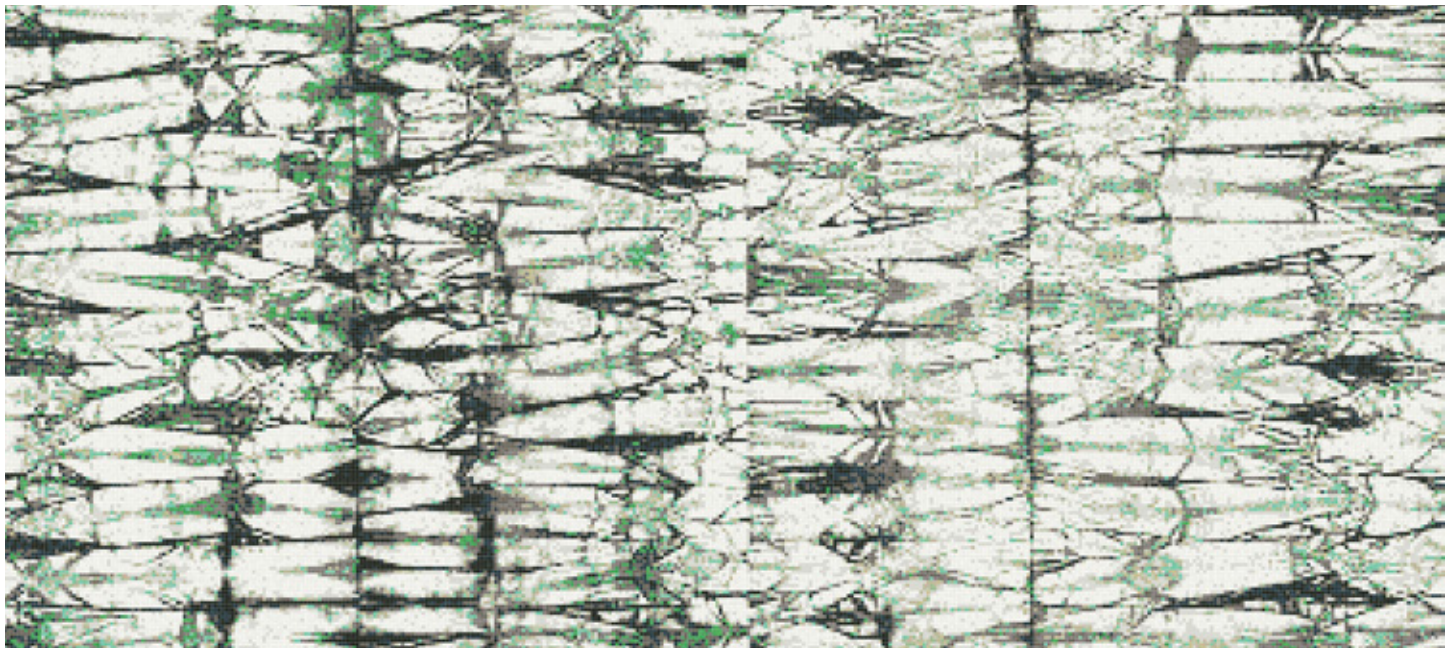
0121502 - Regeneration, Sierra



0121501 - Regeneration, Titanium



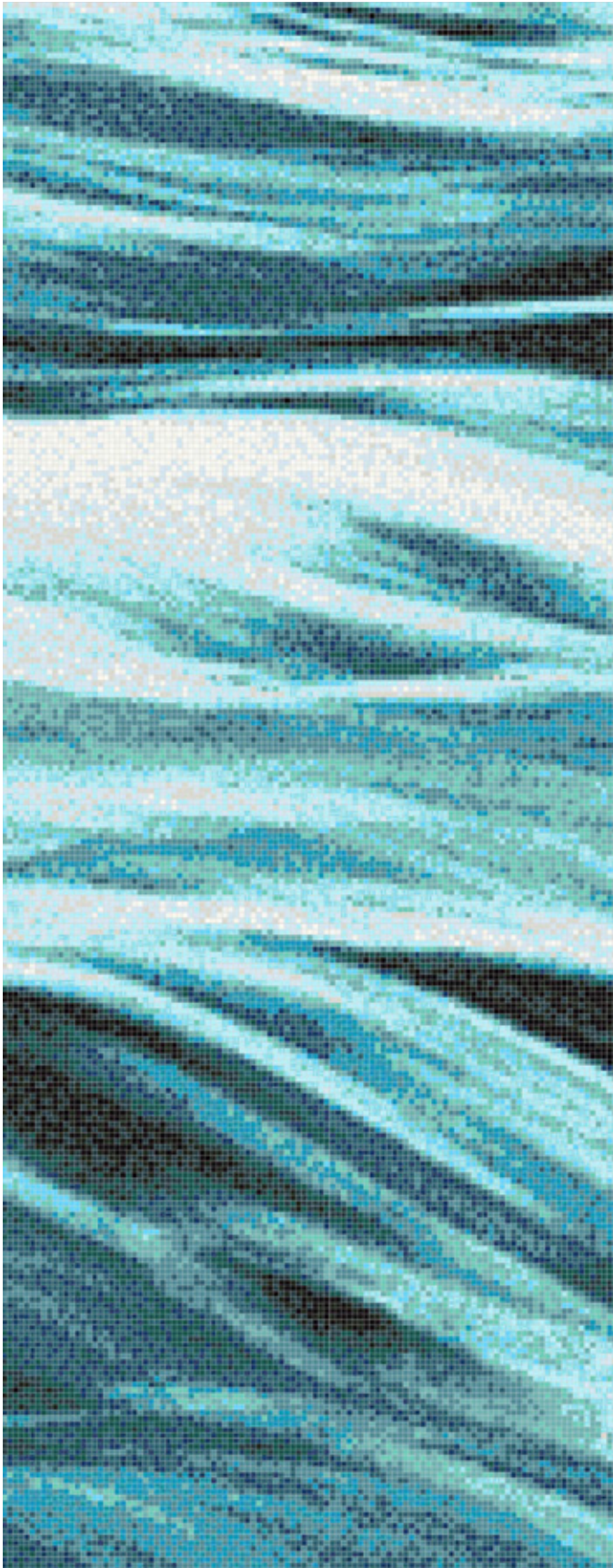
0121503 - Regeneration, Turquoise



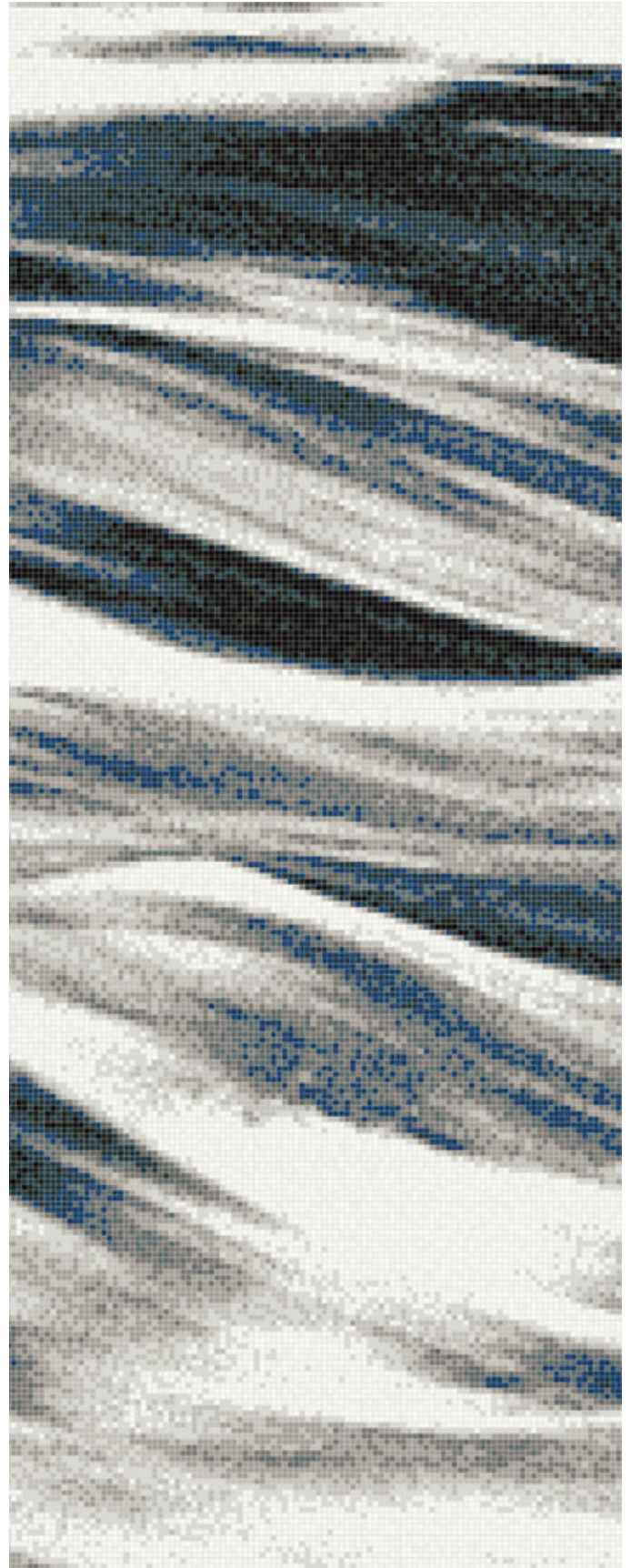
0121504 - Regeneration, Sage

Cascade

180"W x 120"H



0121202 - Cascade, Turquoise



0121203 - Cascade, Moonlight

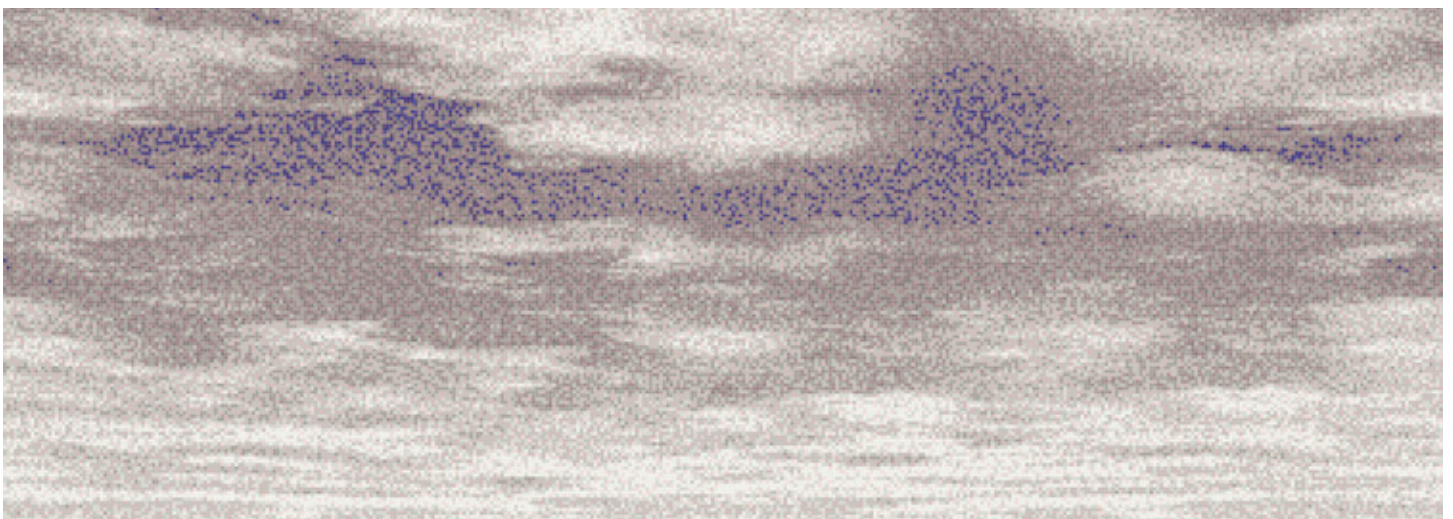


Cumulus

180"W x 120"H



0121002 - Cumulus, Twilight



0121005 - Cumulus, Lavender



0121001 - Cumulus, Midday



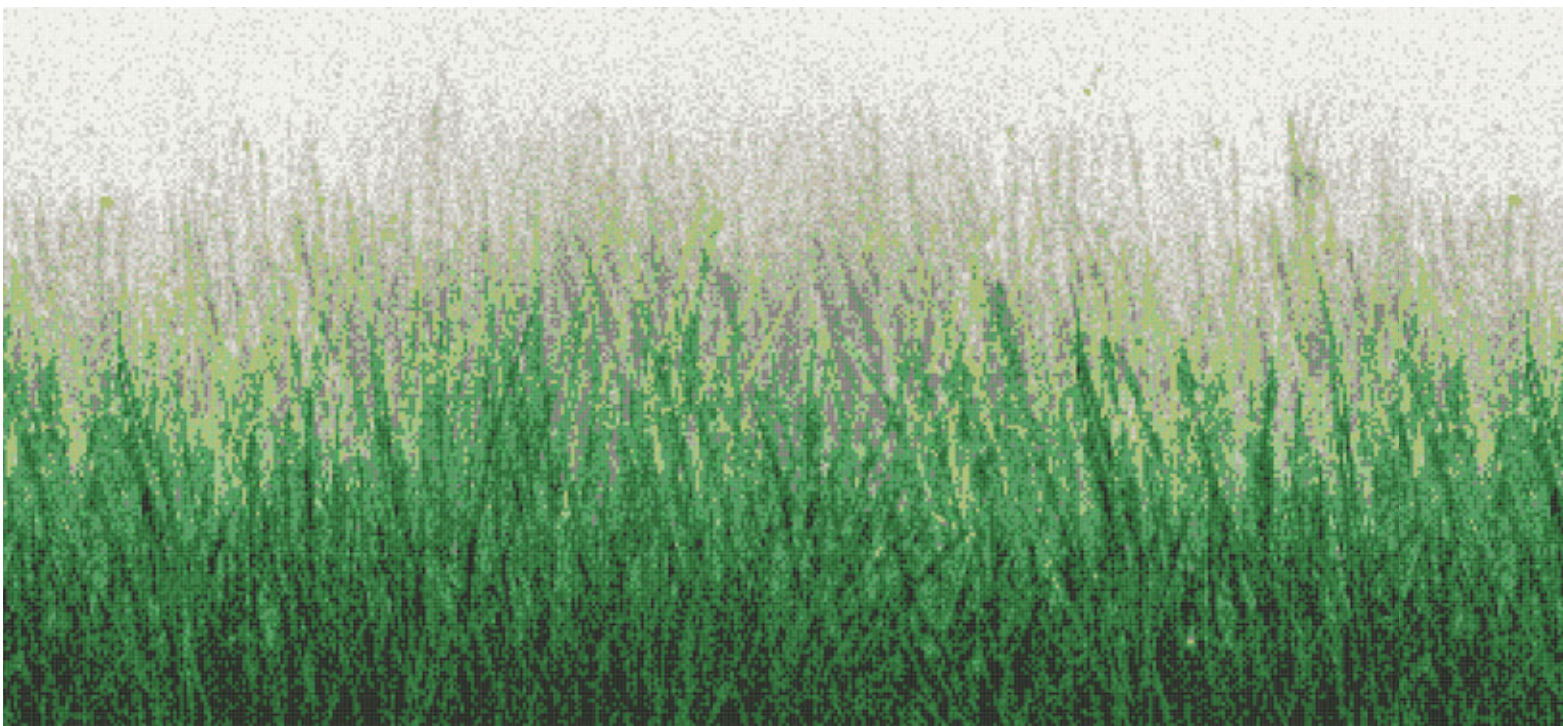
0121004 - Cumulus, Titanium

Meadow

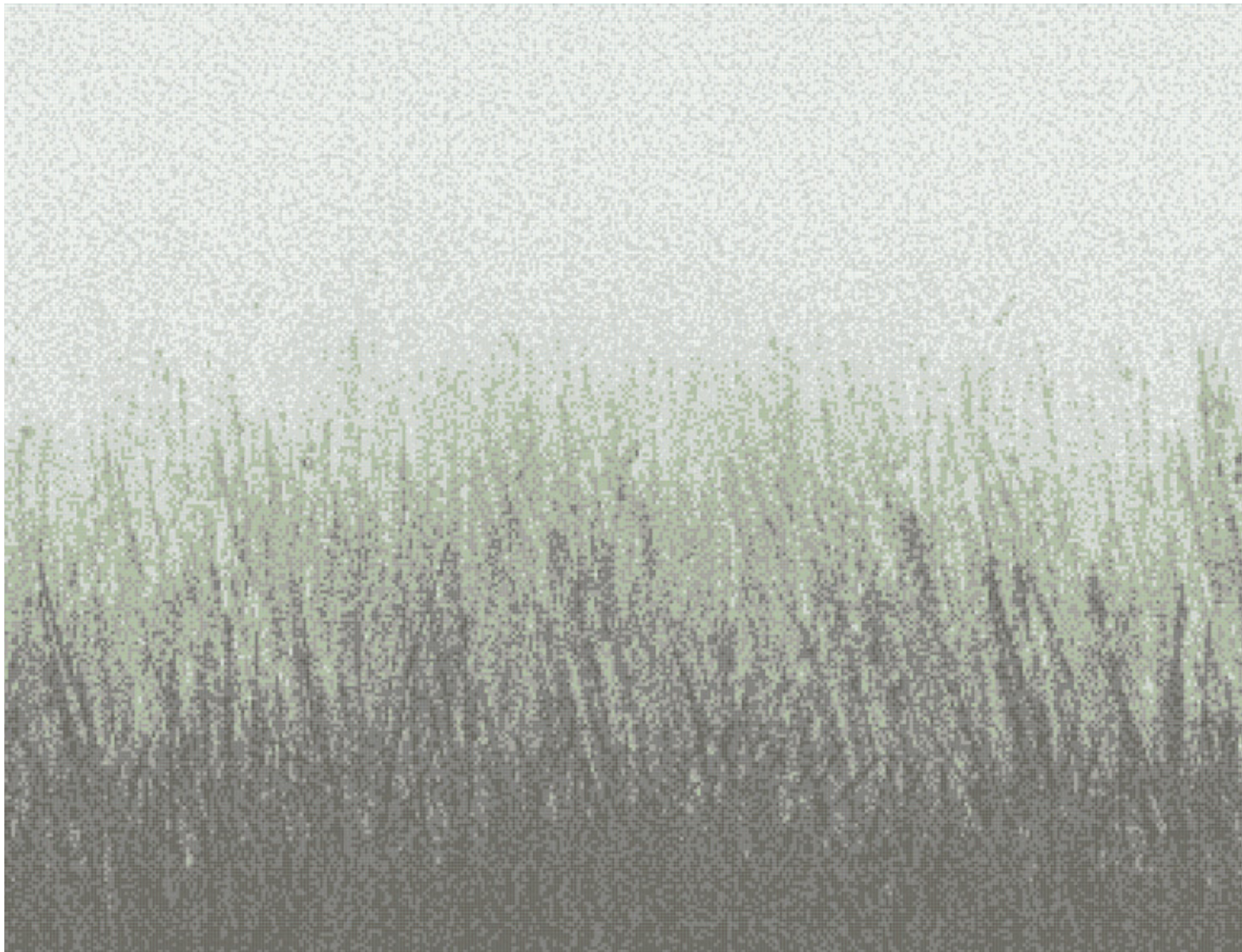
180"W x 120"H



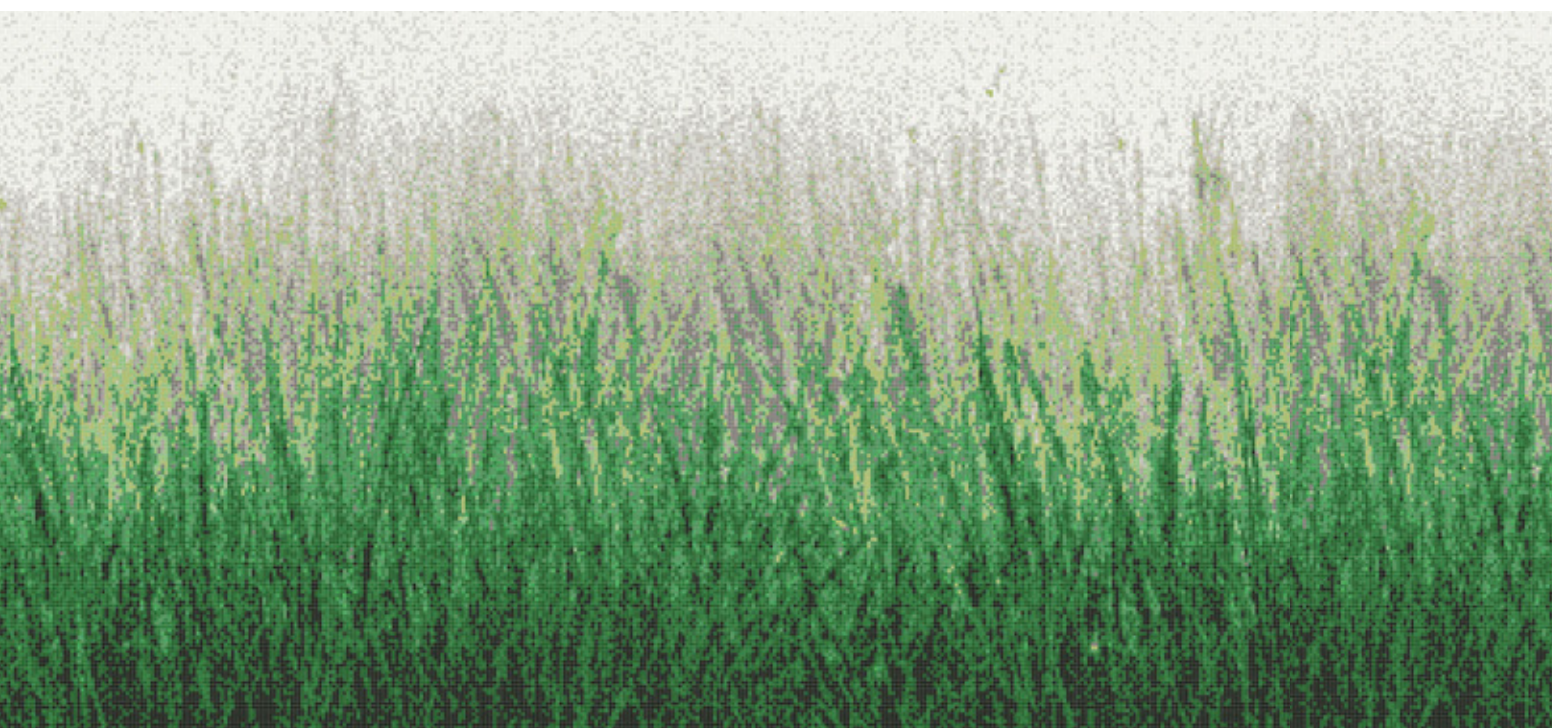
0120602 - Meadow, Sierra



0120603 - Meadow, Virid



0120601 - Meadow, Aether





THE URBN COLLECTION



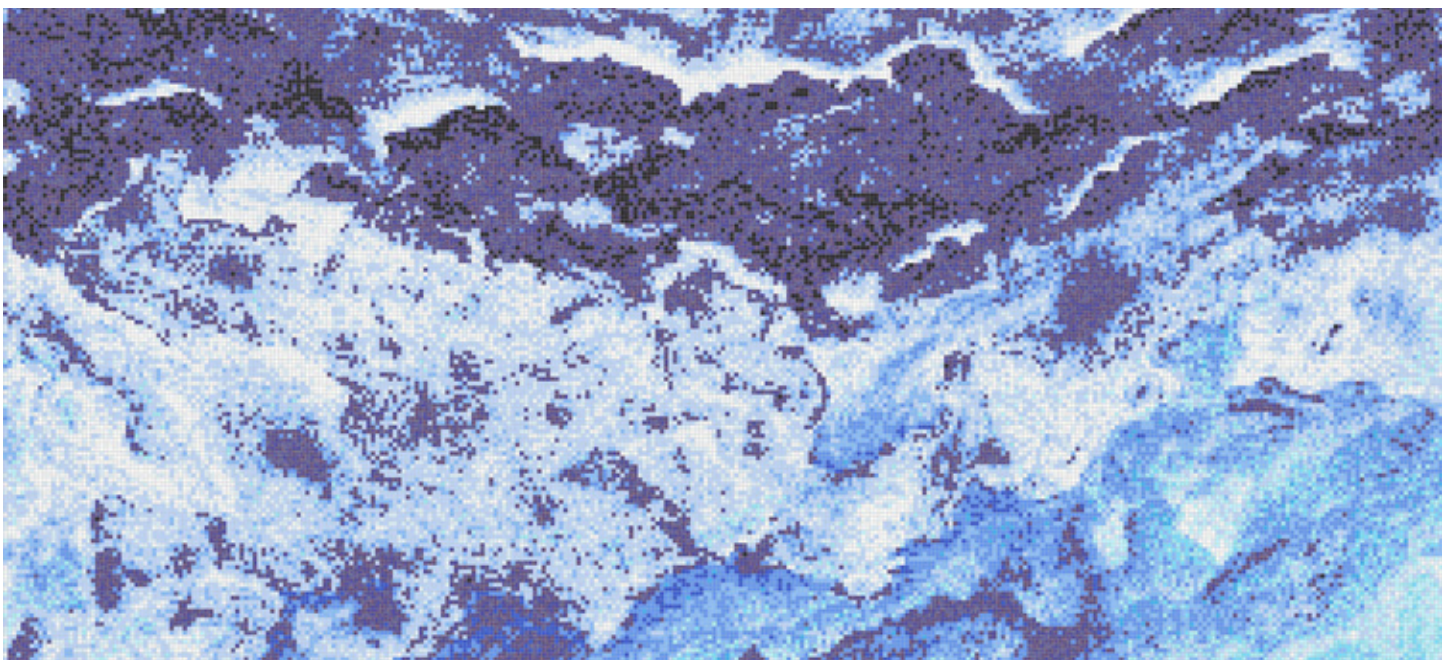
AFH artist, Lexi Zotov, uses Artaic's Tylist™ design software to transform her original artwork into a mosaic mural for the URBN Collection.

High contrast abstract patterns make up URBN - a bold mosaic collection that celebrates Boston's urban youth. Artaic, in collaboration with local non-profit **Artists For Humanity (AFH)**, uses design technology to transform teen artists' original artwork into mosaic murals.

AFH receives a royalty from any URBN design that is produced. The purchase of your mosaic will directly benefit teen artists!

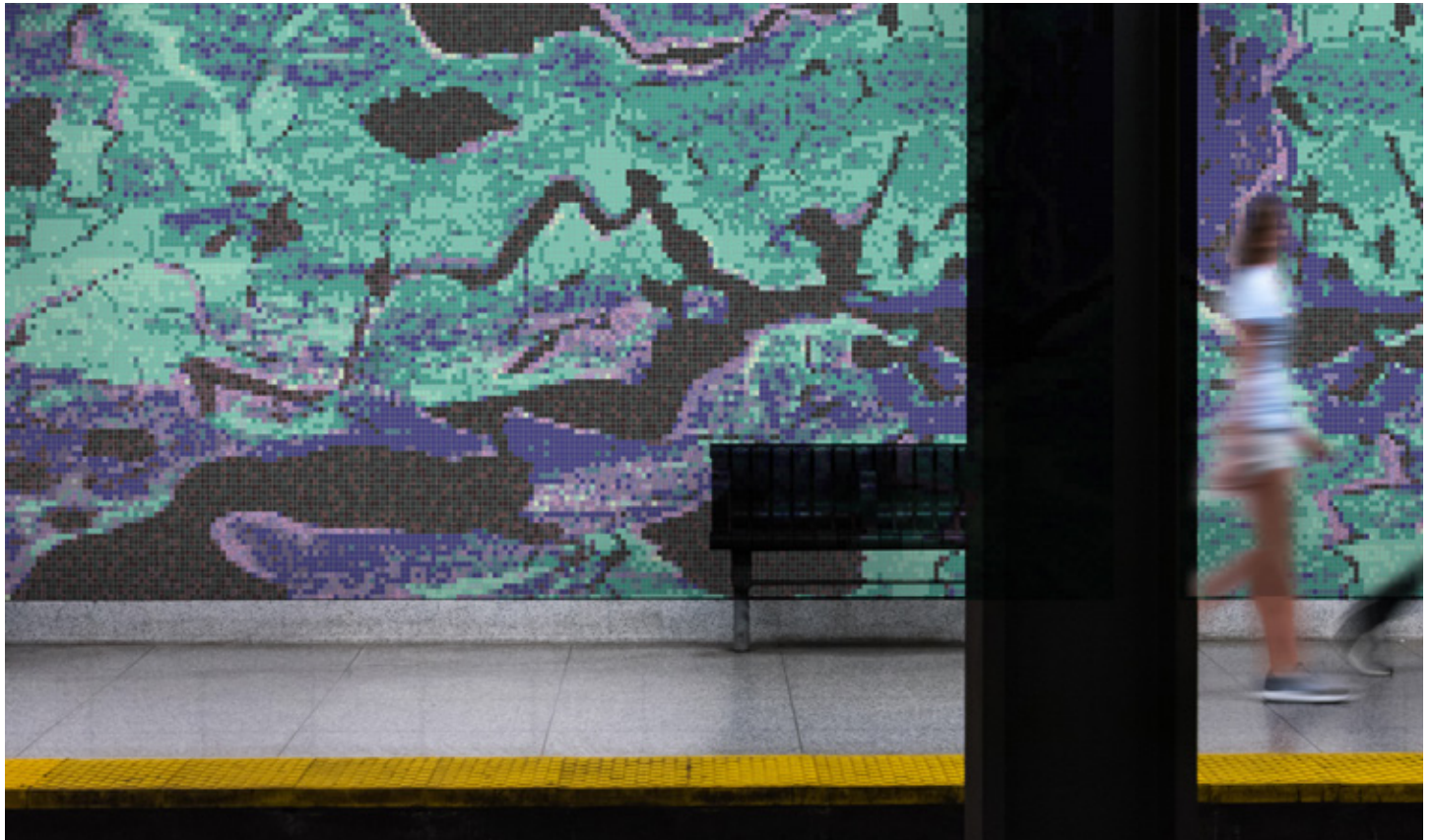
Since its founding in 1991, **Artists for Humanity (AFH)** has used art and design to bridge economic, racial, and social divides by providing creative training, mentorship, and paid employment opportunities to underserved urban youth. **AFH** grew from an unconventional idea that young people can provide contemporary creative services to the business community. **AFH** employs 250+ Boston teens annually.

To see more designs and colorways from this collection, visit Artaic.com/URBN.

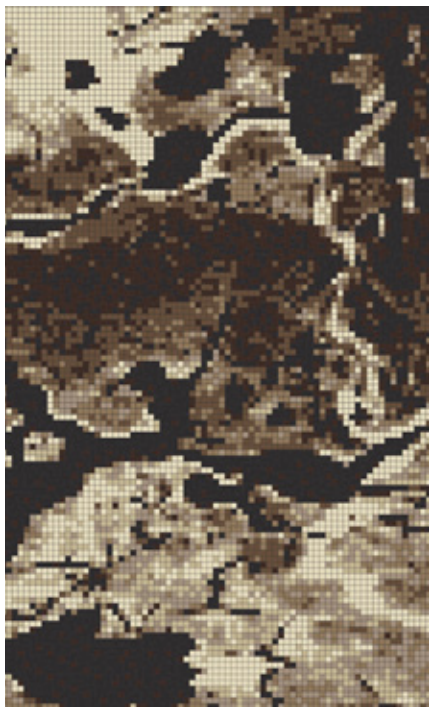


0305502 - URBN Collection:
Typoglyphic, Cobalt

By Artists for Humanity



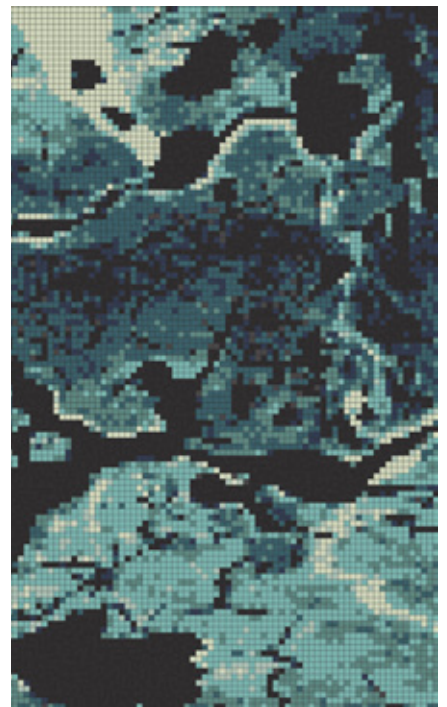
0303713 - URBN Collection:
Estuary, Enchanted



0303752 - URBN Collection:
Estuary, Java



0303755 - URBN Collection:
Estuary, Stone



0303751 - URBN Collection:
Estuary, Pacific



info@artaic.com | artaic.com | +1.617.418.1928



Federal law provides severe civil penalties for the unauthorized reproduction or distribution or exhibition of this copyrighted work. Copyright infringement, including infringement without monetary gains, is illegal and can result in penalties of up to \$250,000 for each copyrighted work. Artaic LLC has the exclusive right, title and interest in the copyrighted material. Artaic LLC does not grant or convey any intellectual property rights, including but not limited to, the right to copy, reproduce, prepare derivative works, or distribute the copyrighted material without the express written consent of Artaic LLC. Any violation to the above terms is strictly prohibited. ALL RIGHTS RESERVED.