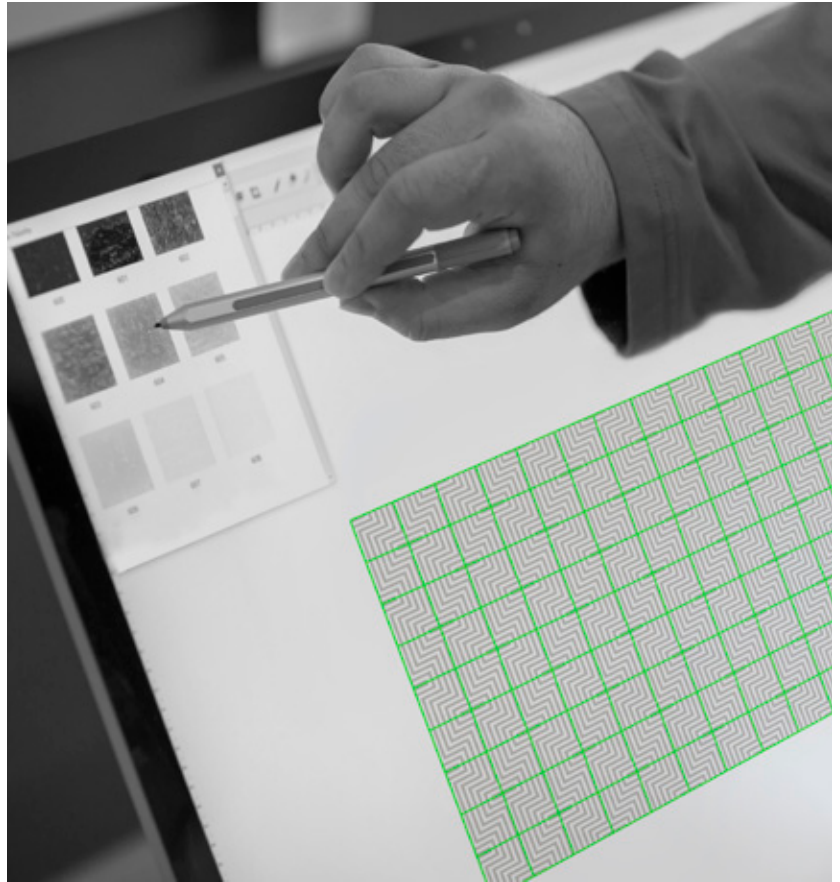




# Foundation

Featuring 3/4" Vitreous Glass tile.  
Also available in 3/8" Vitreous Glass,  
Sintered Glass, and Natural Stone.



## THE PROCESS

Artaic's award-winning mosaics can be found around the globe, enhancing the design of spaces large and small. Discover this versatile solution for interiors and exteriors that can play well with traditional or modern, classic or contemporary. Whether it's a stunning showpiece making a bold statement, or a subtle undertone of sophistication and style, Artaic credits it's work to the collaborative spirit within the architecture and design community.

The Artaic design team digitally renders the imagery for each mosaic, then robotically transforms the concept into its final form - a mosaic masterpiece. While the creative vision can stem from any inspiration whatsoever, we also provide remarkable design collections to ignite ideas.

Our proprietary modern technology has driven this innovative process. Artaic's state-of-the-art facility is headquartered at The Boston Design Center, where the hub of innovation meets style. To learn more about how Artaic is revolutionizing the mosaic tile industry, visit our website at [artaic.com](http://artaic.com).

# Foundation



## THE COLLECTION

The Foundation tile collection explores the core element of elegant and affordable tile design – patterns. The square 3/4" vitreous glass tile is used to develop a series of versatile and unique repeating patterns and panels that are perfect for a variety of surfaces and high volume projects.

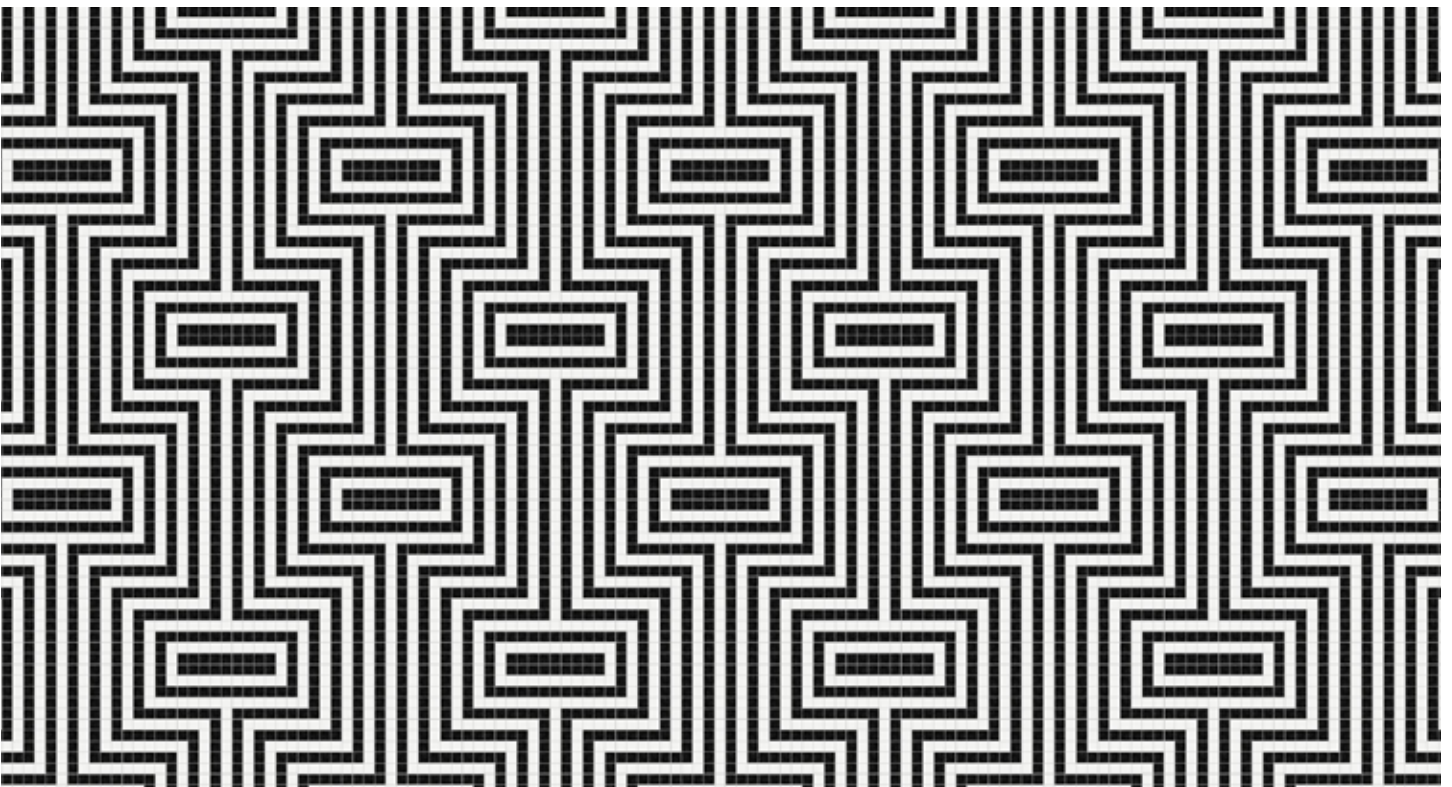
All mosaics are produced to order, and are infinitely customizable by tile type, size, color, and imagery.

# Optical

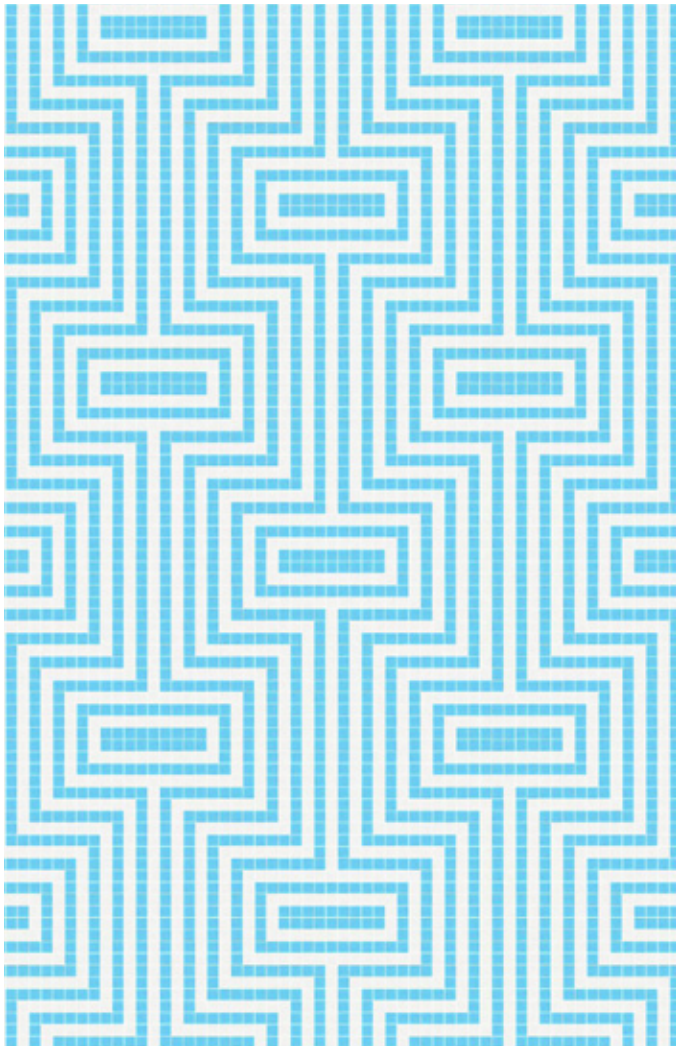
Design is shown at 175" W x 118" H - Seamless repeating pattern



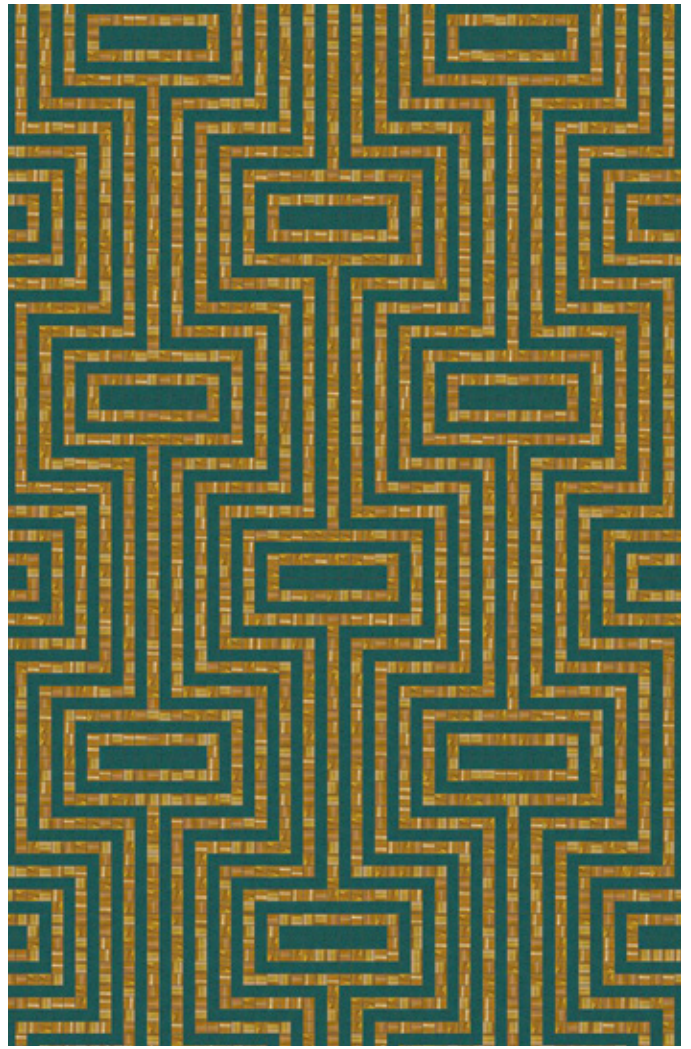
0092101 - Optical, Lunar



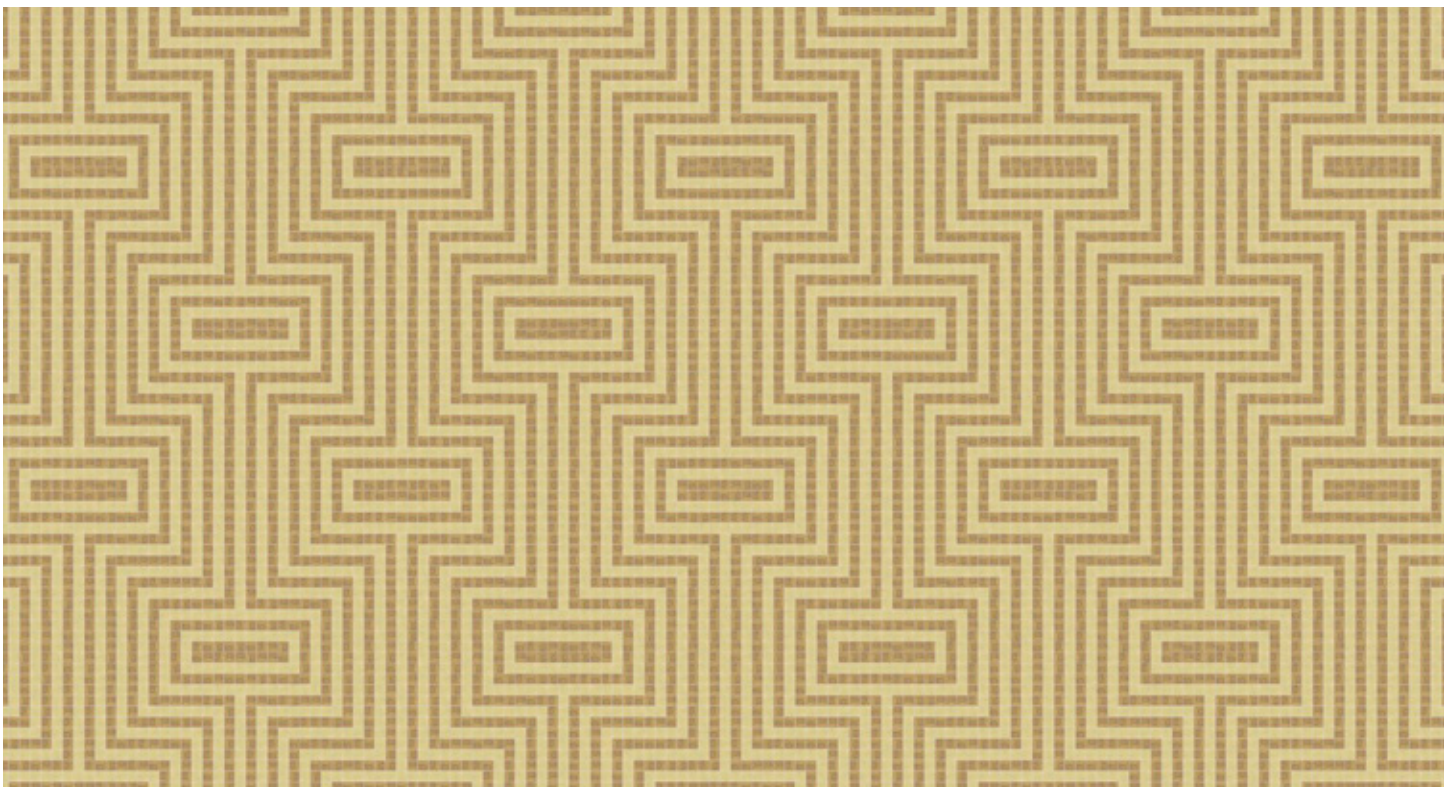
0092101 - Optical, Lunar



0092103 - Optical, Lake



0092121 - Optical, Pharaoh



0092107 - Optical, Shimmering Sands

# Gingham

Design is shown at 175" W x 118" H - Seamless repeating pattern



0099228 - Gingham, Forest



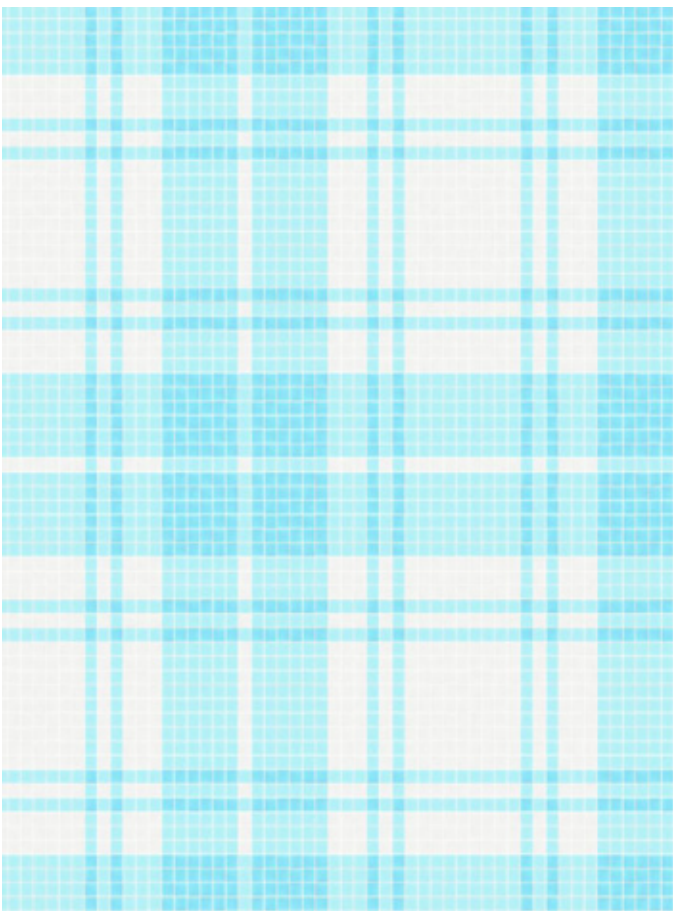
0099228 - Gingham, Forest



0099229 - Gingham, Harvest



0099227 - Gingham, Cabin



0099203 - Gingham, Lake



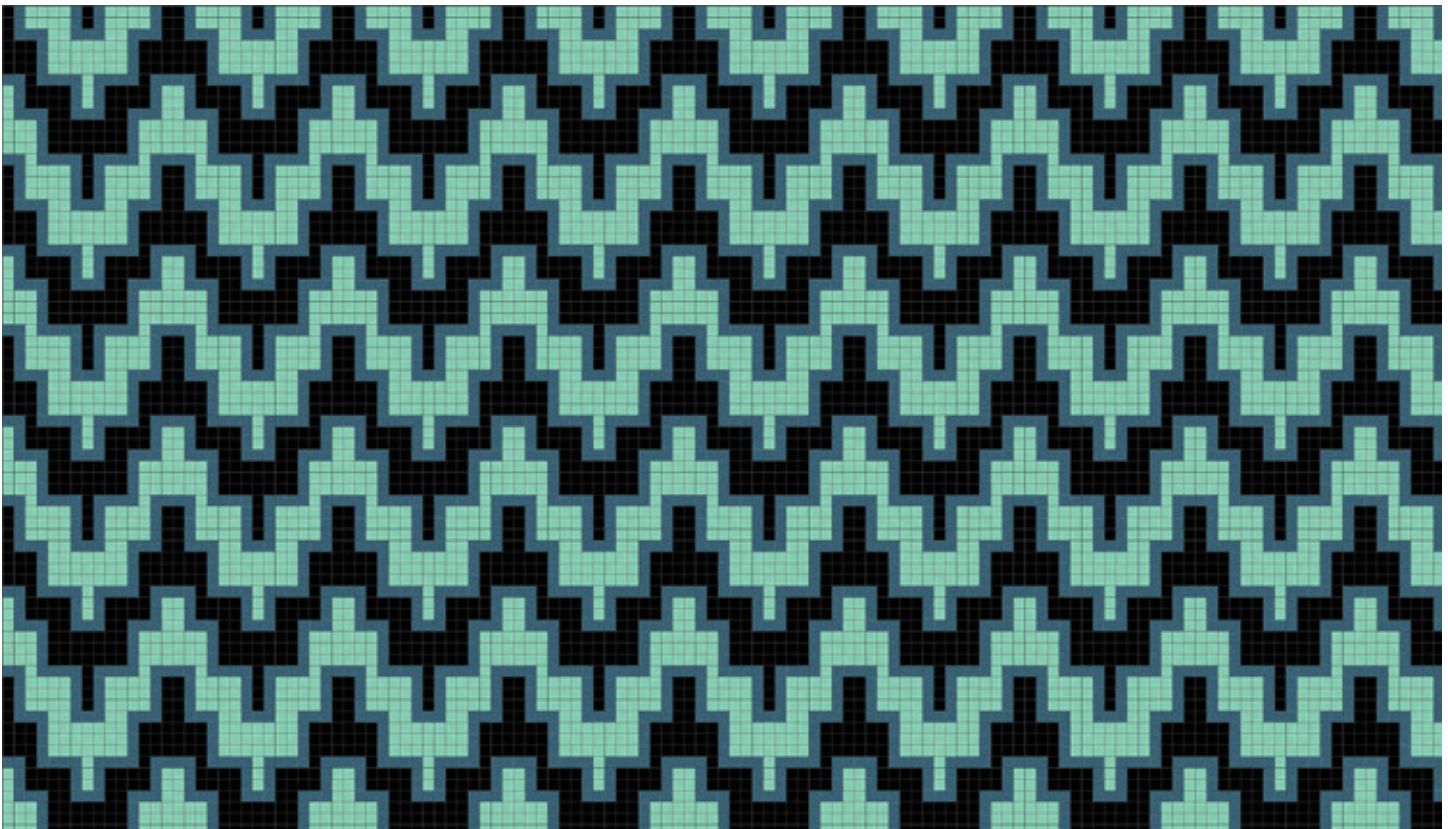
0099202 - Gingham, Titanium

# Maya

Design is shown at 175" W x 118" H - Seamless repeating pattern

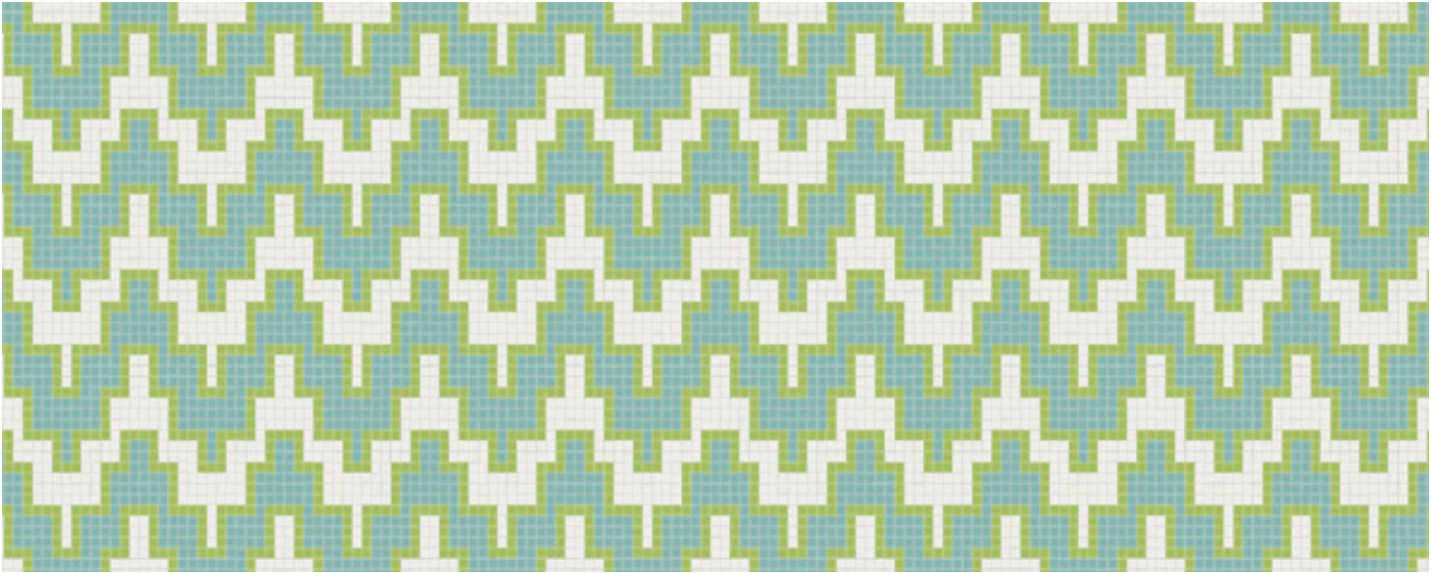


0091810 - Maya, Turquoise

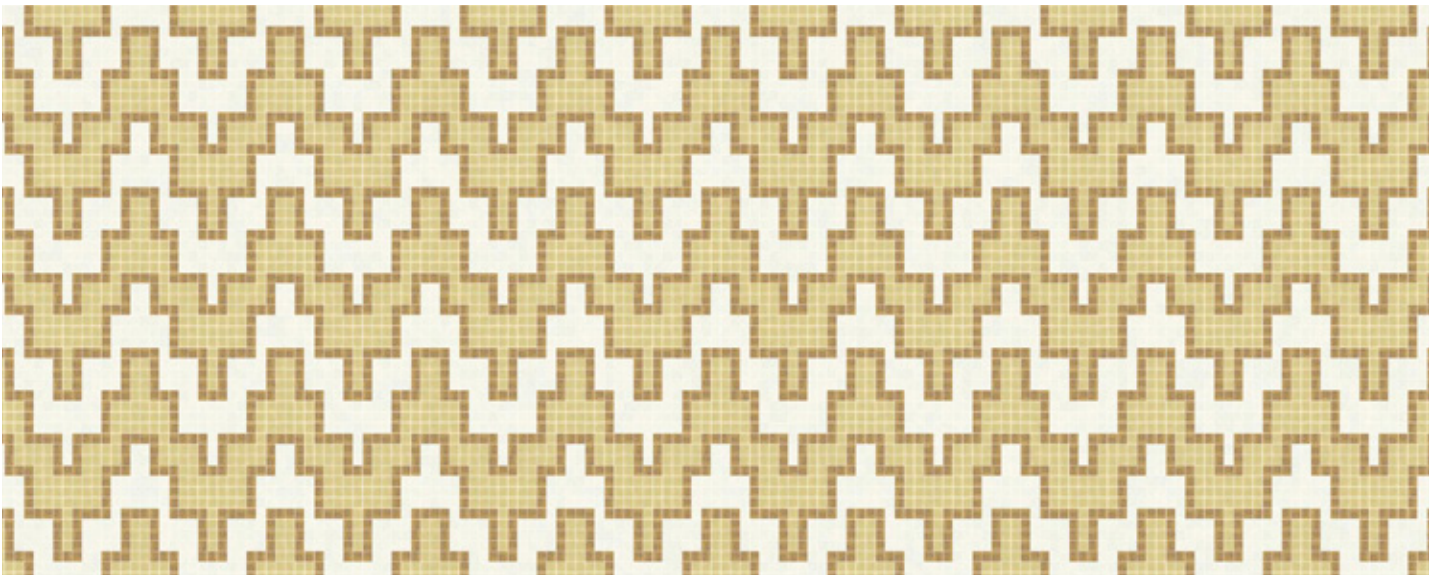


0091810 - Maya, Turquoise

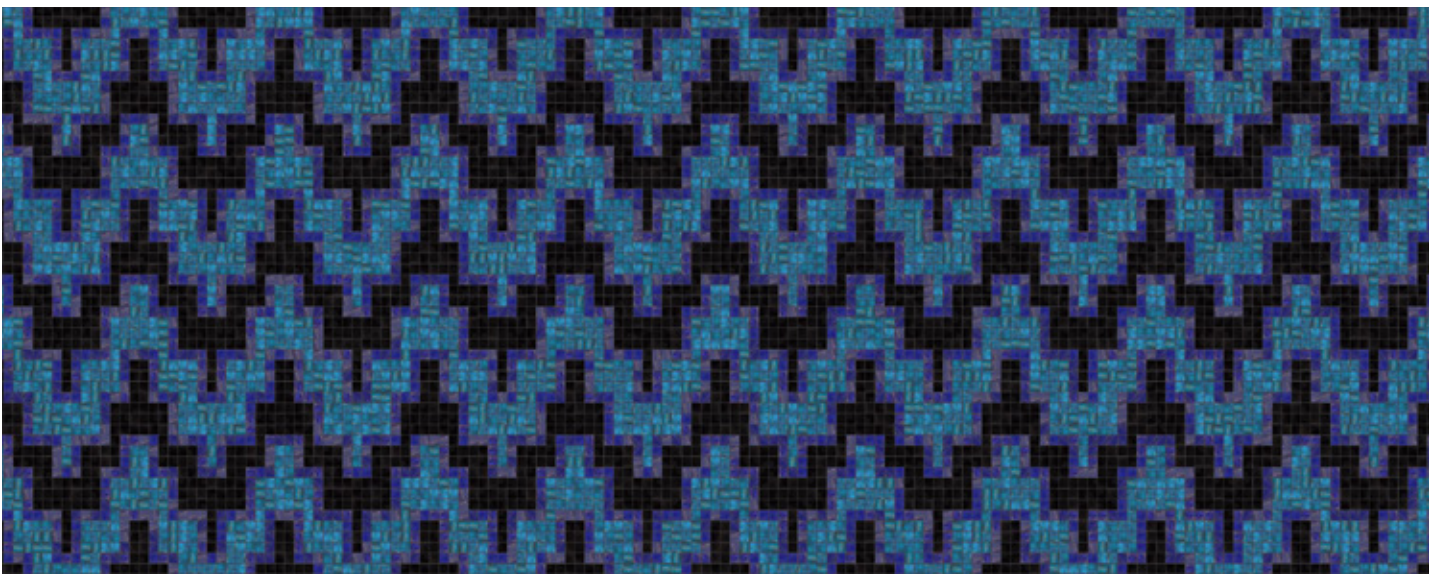




0091809 - Maya, Aloe



0091807 - Maya, Shimmering Sands



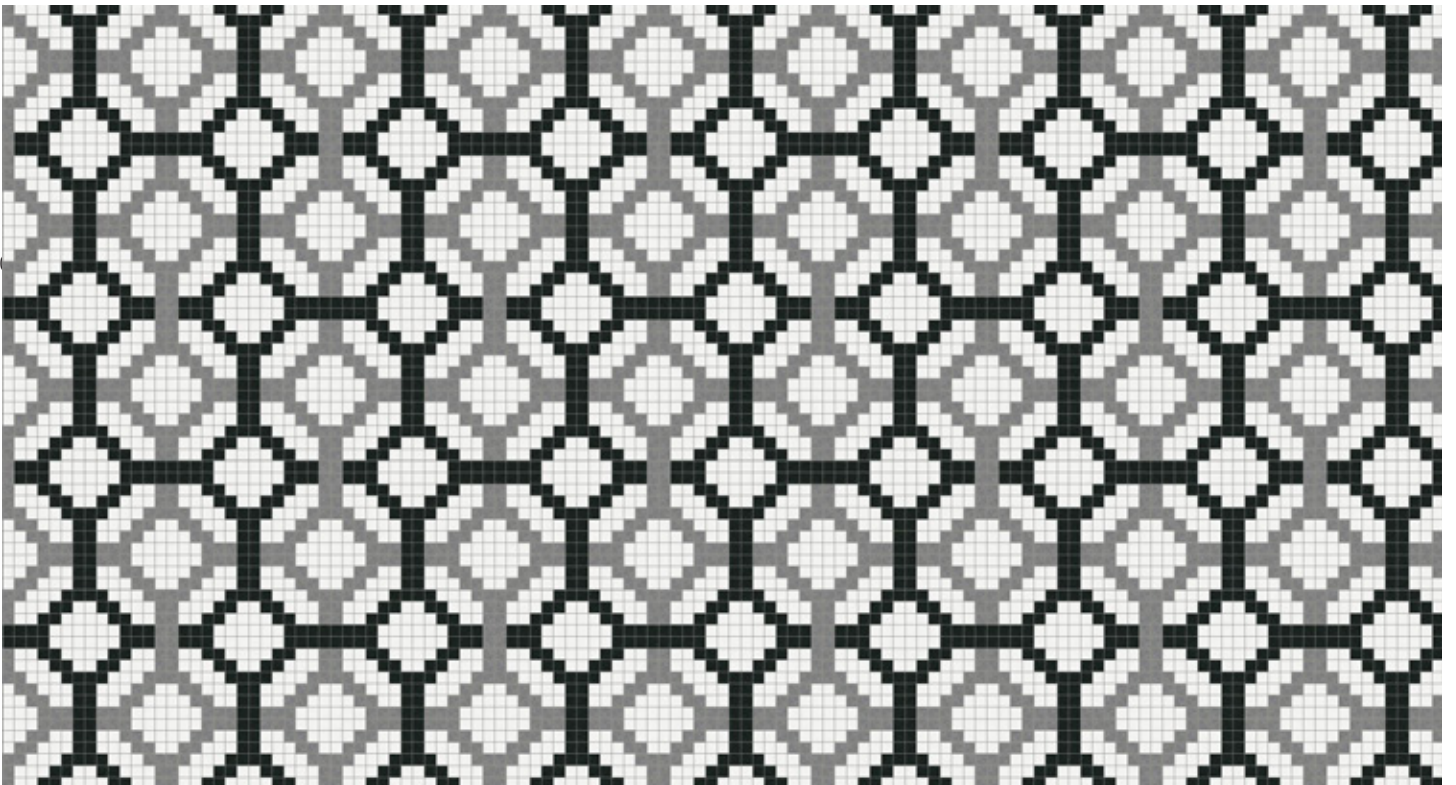
0091808 - Maya, Stormy Sky

# Spectacle

Design is shown at 175" W x 118" H - Seamless repeating pattern



0099001 - Spectacle, Lunar



0099001 - Spectacle, Lunar



0099017 - Spectacle, Eclipse



0099018 - Spectacle, Honey



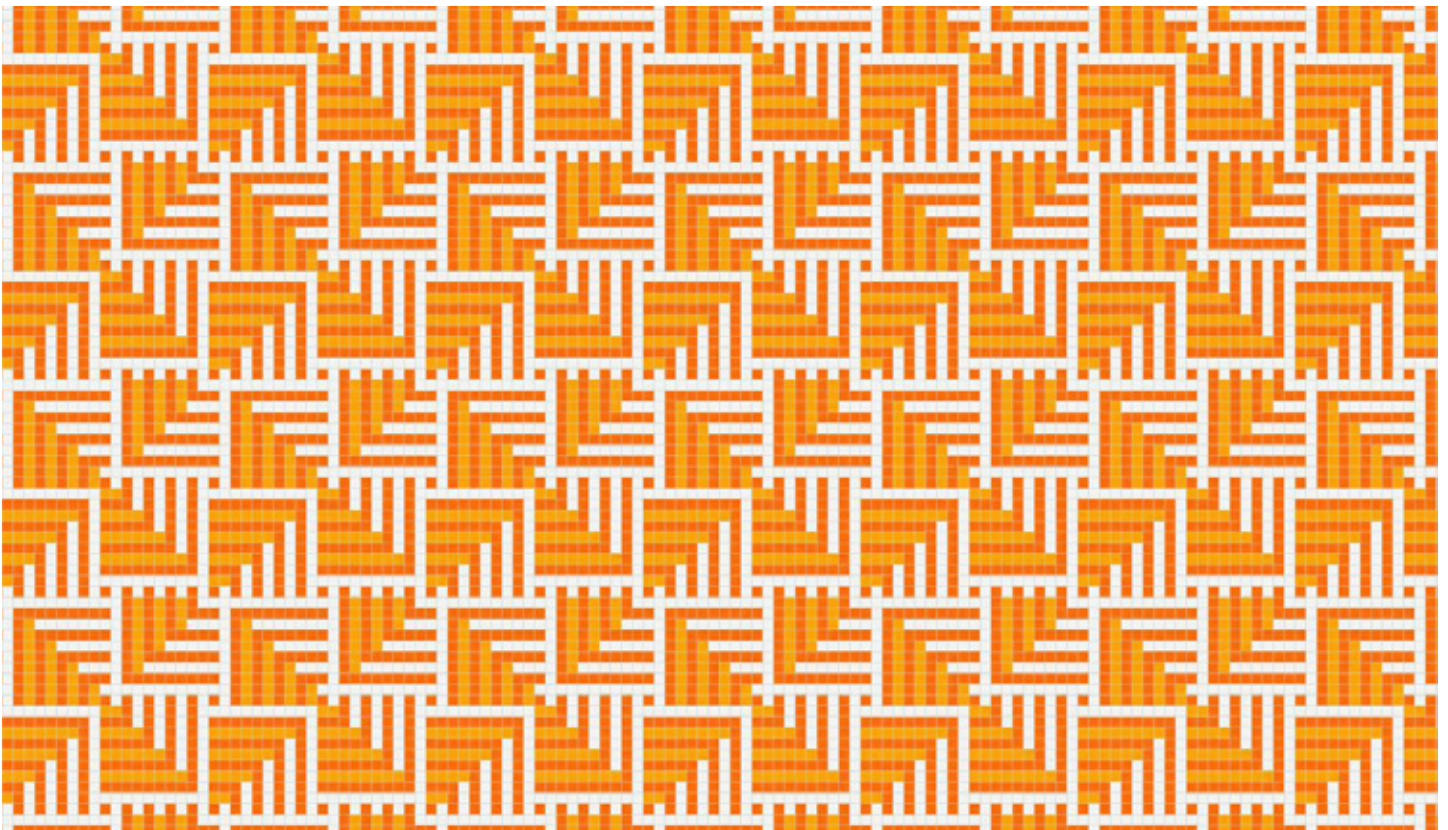
0099016 - Spectacle, Driftwood

# Plateau

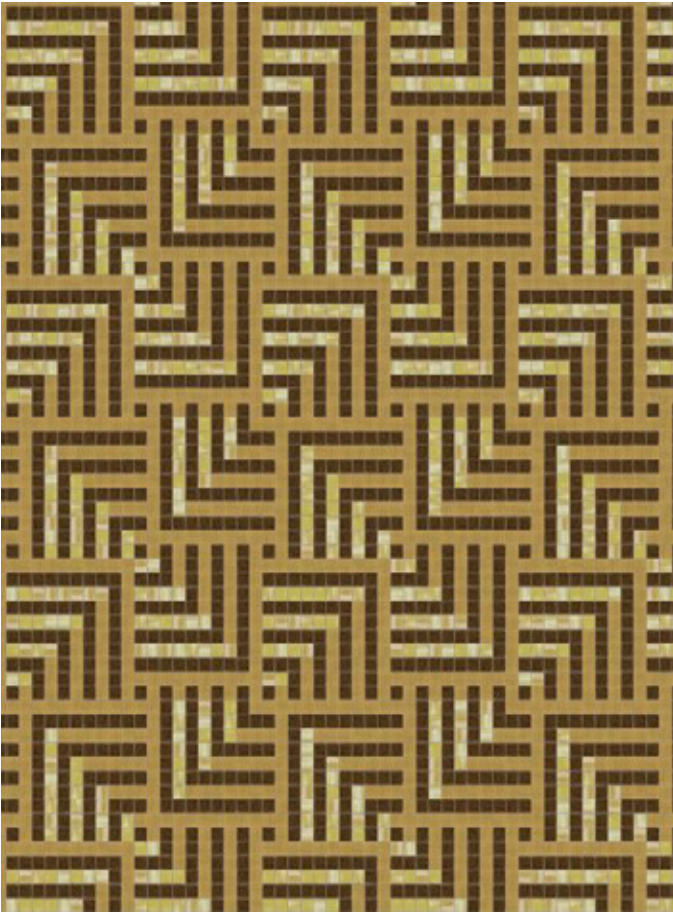
Design is shown at 175" W x 118" H - Seamless repeating pattern



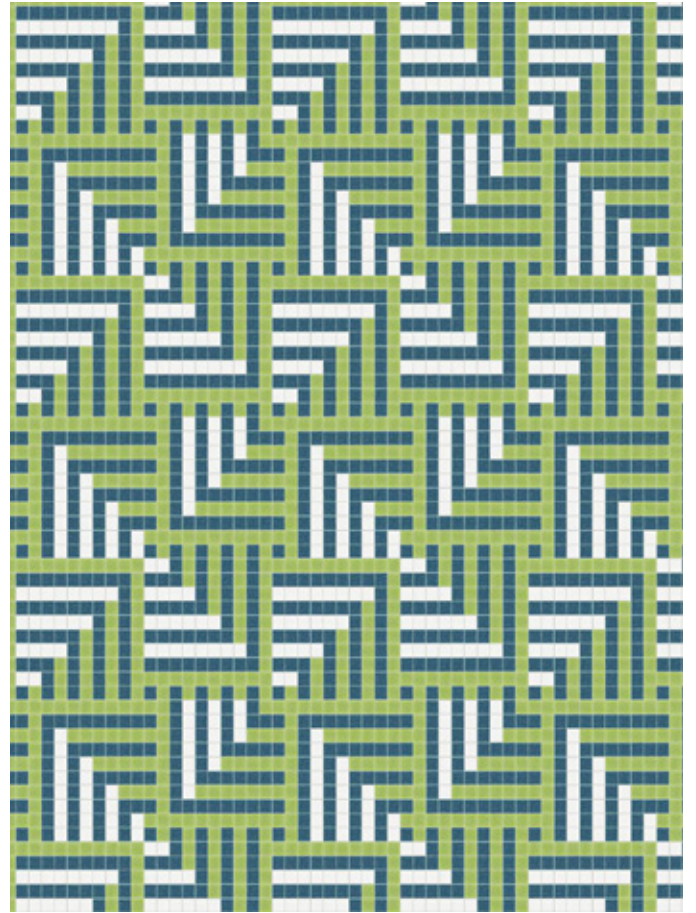
0099126 - Plateau, Ablaze



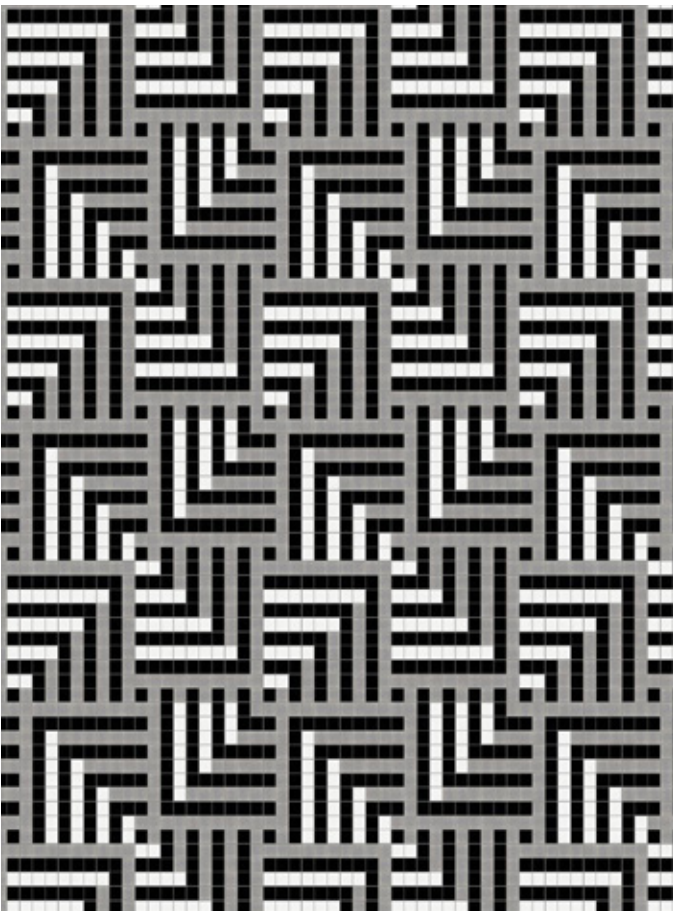
0099126 - Plateau, Ablaze



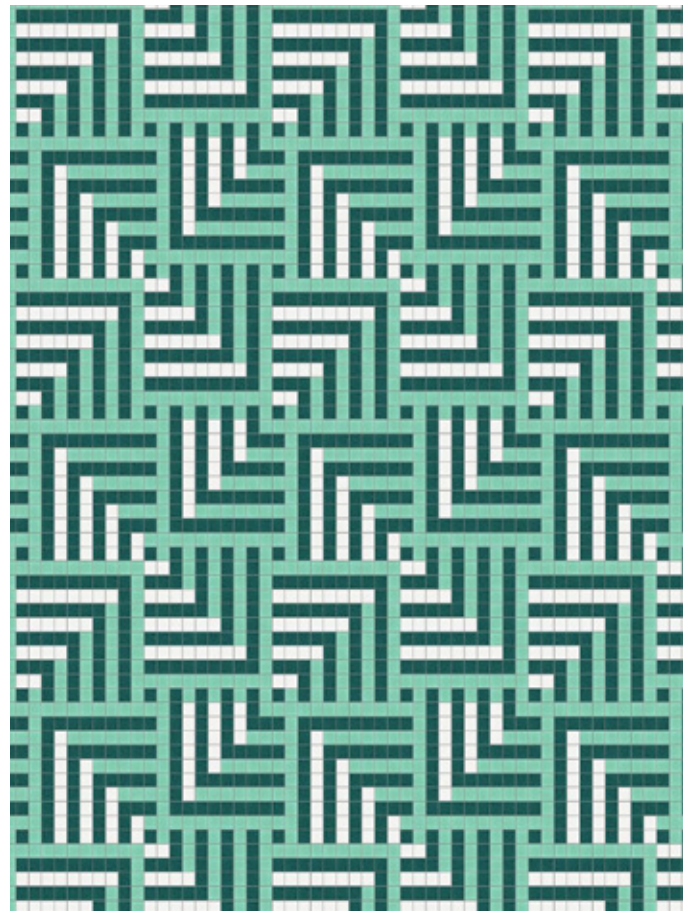
0099125 - Plateau, Gold



0099109 - Plateau, Aloe



0099101 - Plateau, Lunar



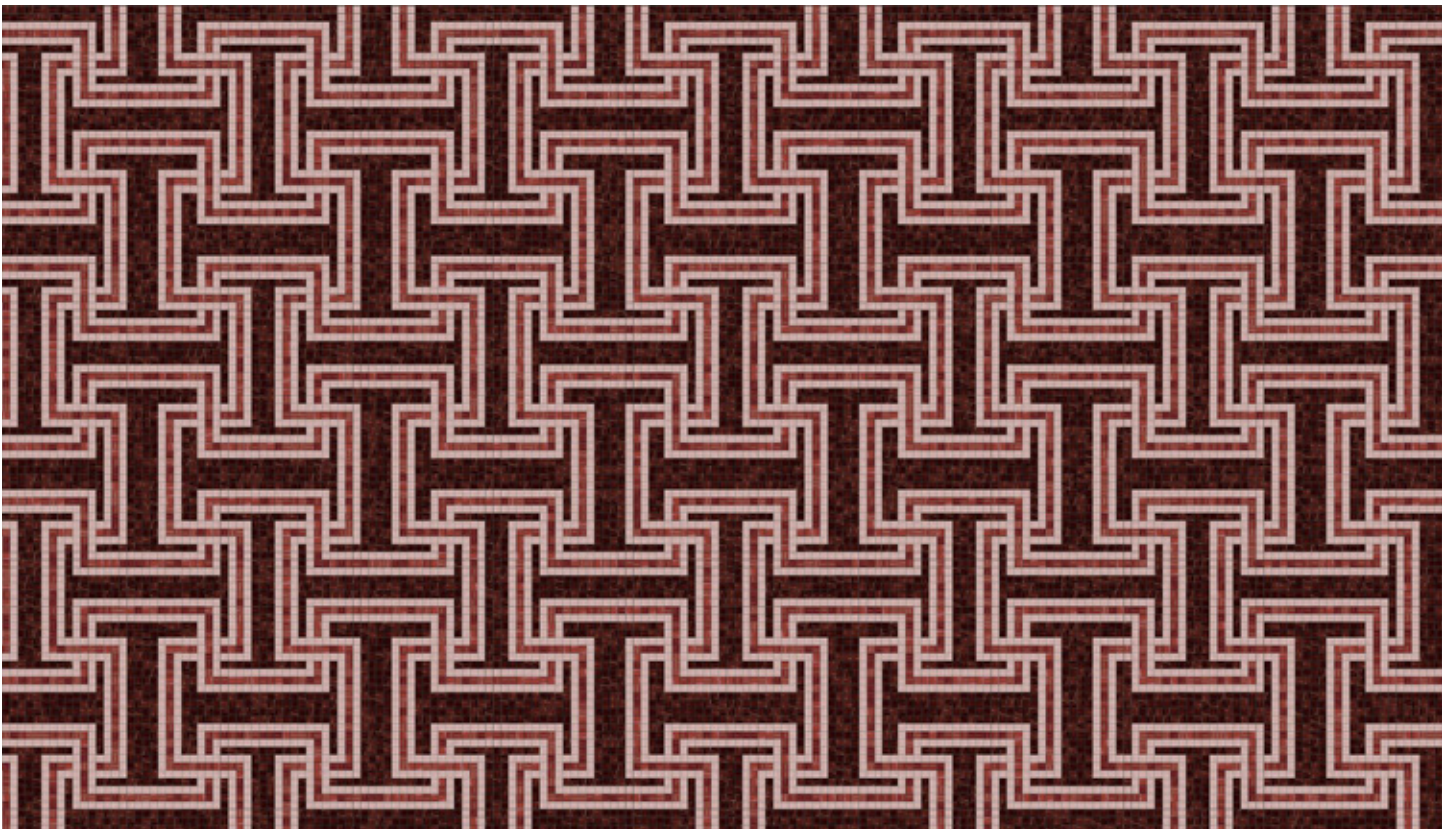
0099110 - Plateau, Turquoise

# Athena

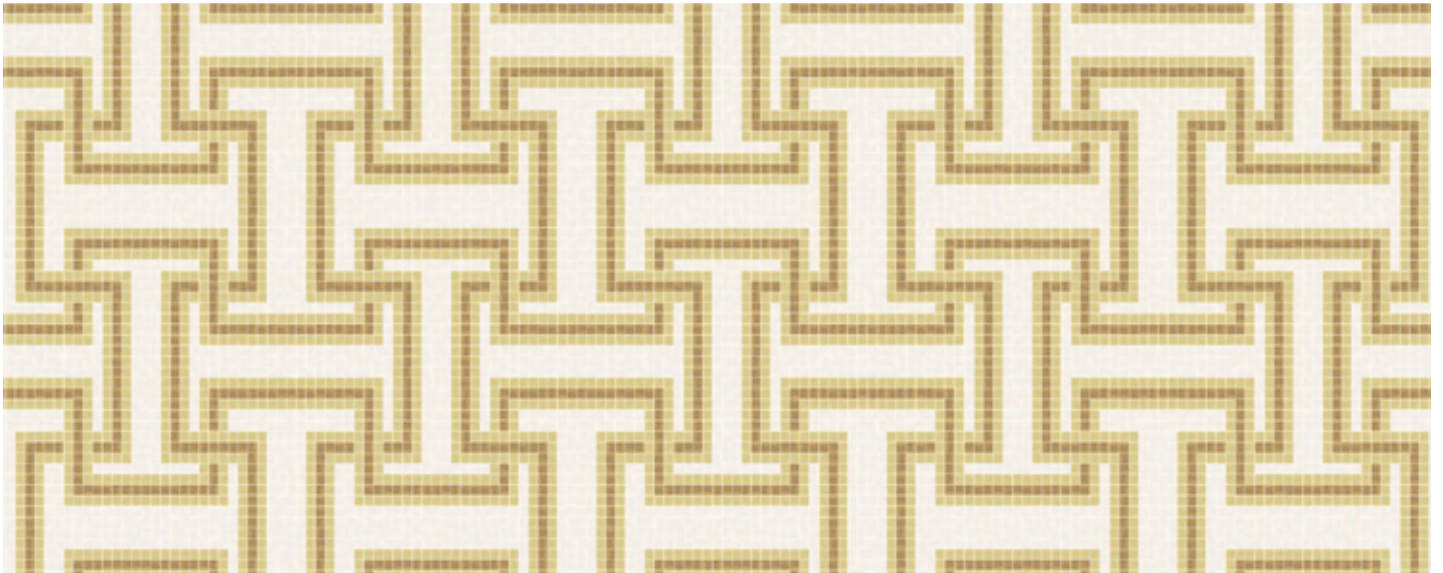
Design is shown at 175" W x 118" H - Seamless repeating pattern



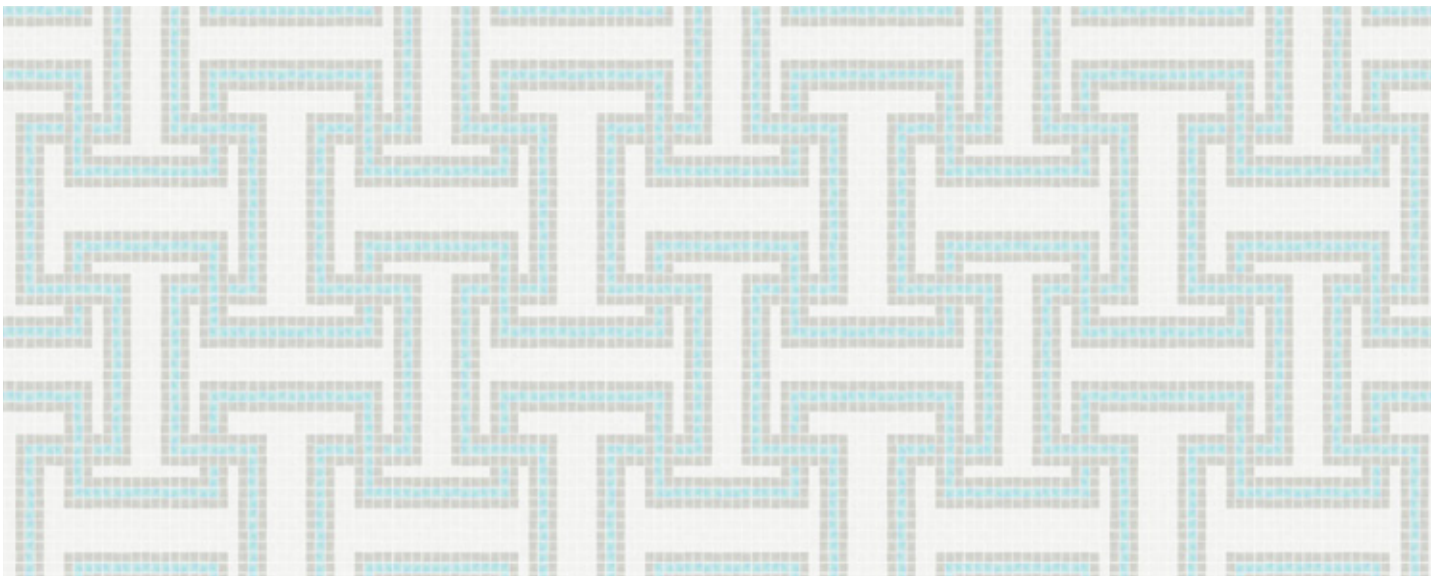
0092323 - Athena, Rouge



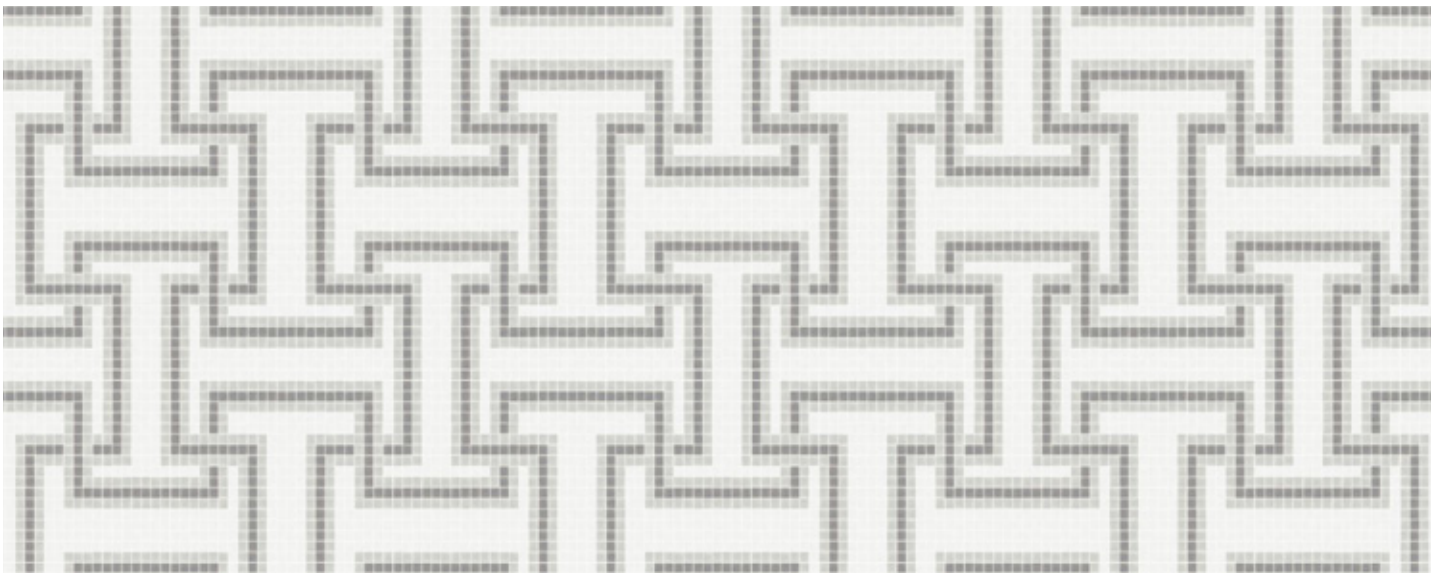
0092323 - Athena, Rouge



0092307 - Athena, Shimmering Sands



0092304 - Athena, Aether



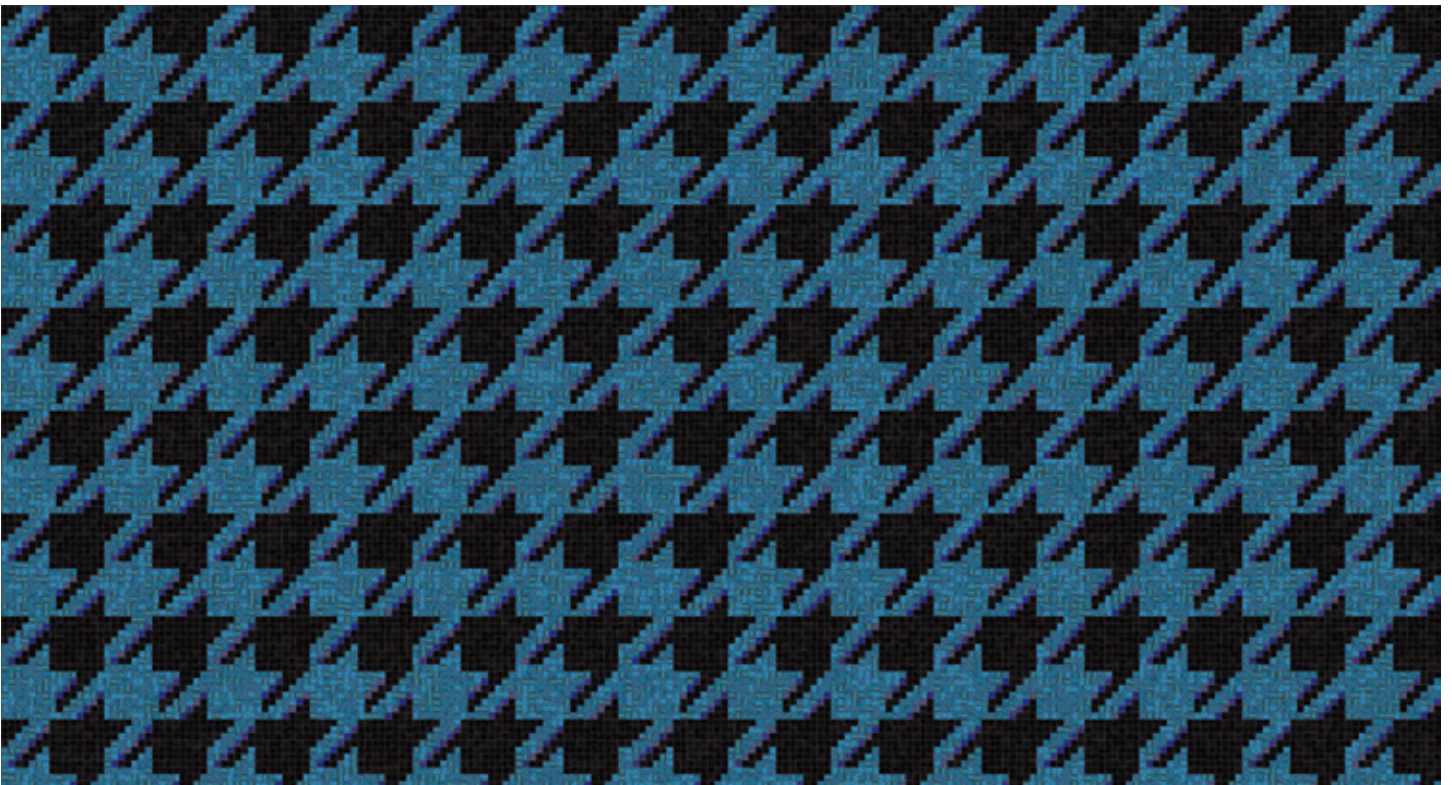
0092302 - Athena, Titanium

# Dane

Design is shown at 175" W x 118" H - Seamless repeating pattern

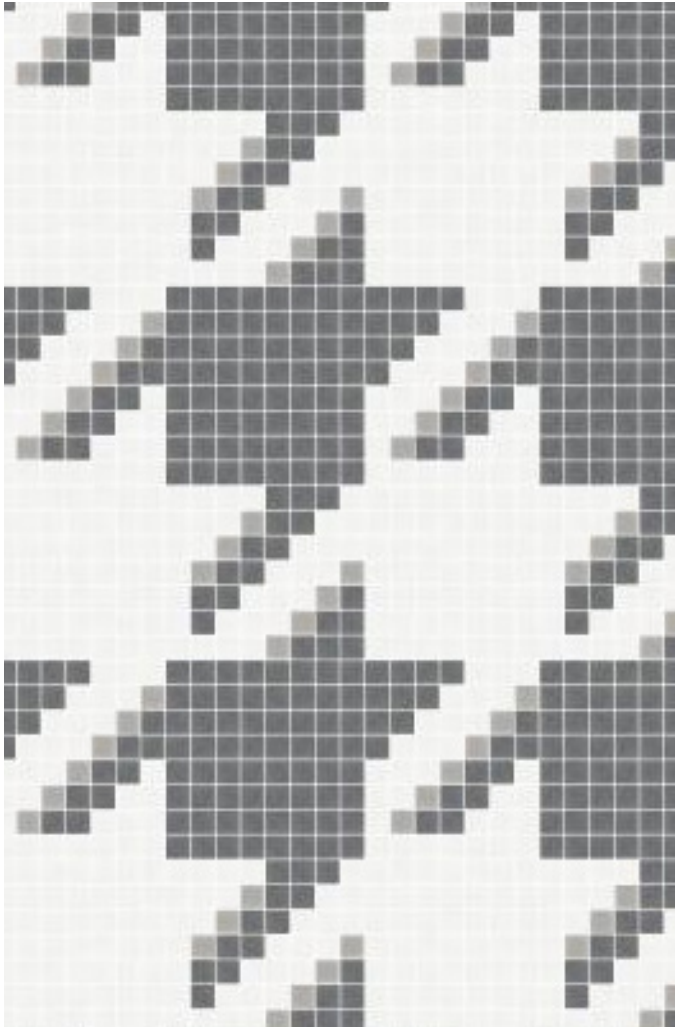


0091258 - Dane, Stormy Sky

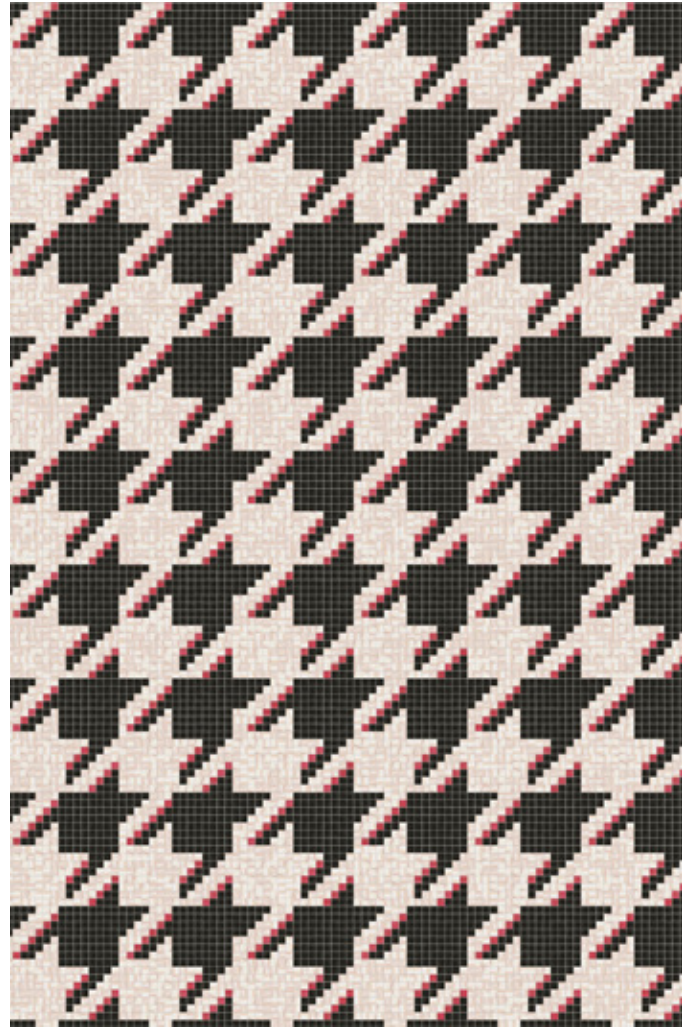


0091258 - Dane, Stormy Sky

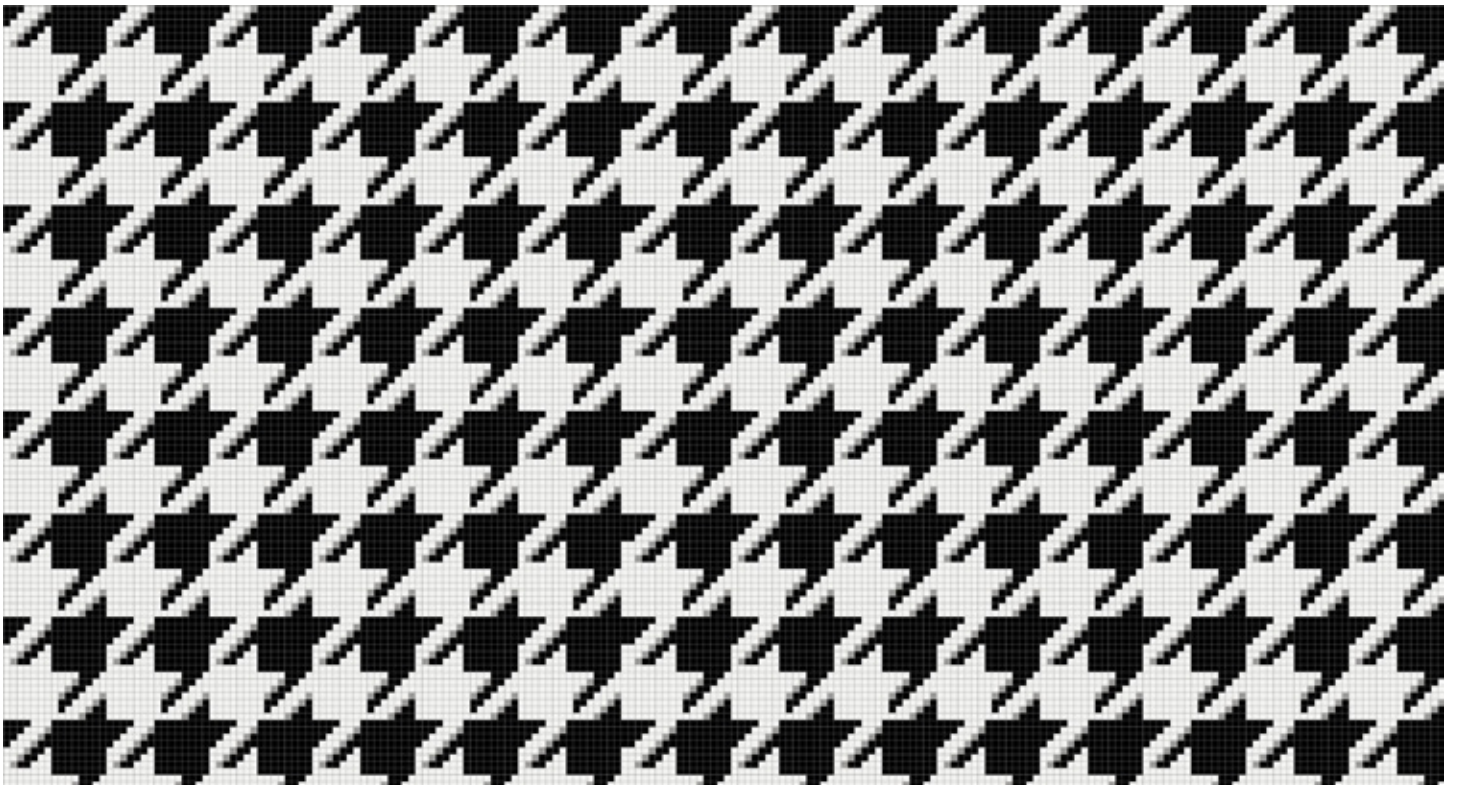




0091252 - Dane, Titanium



0091253 - Dane, Cherry



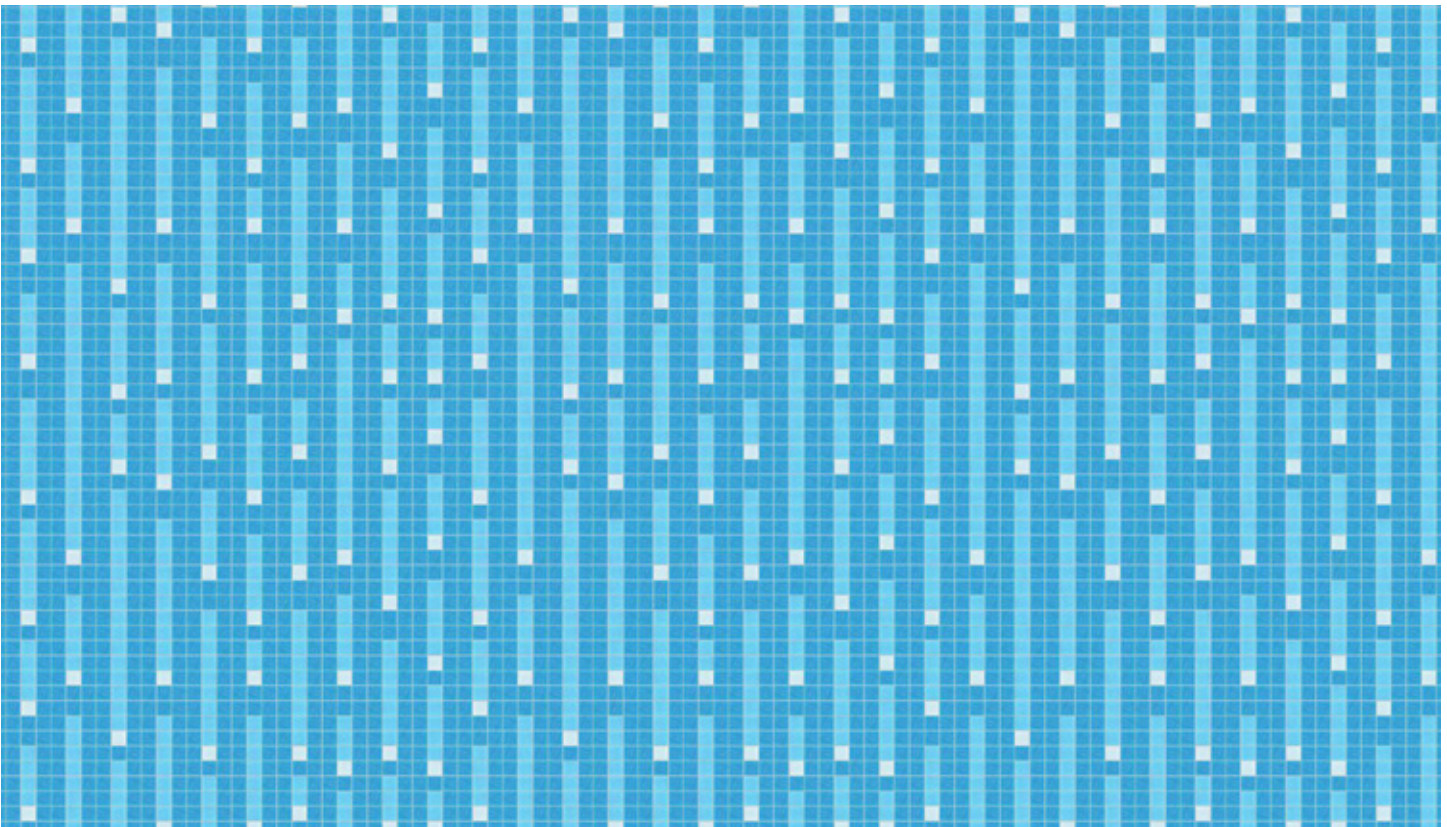
0091251 - Dane, Lunar

# Stellar

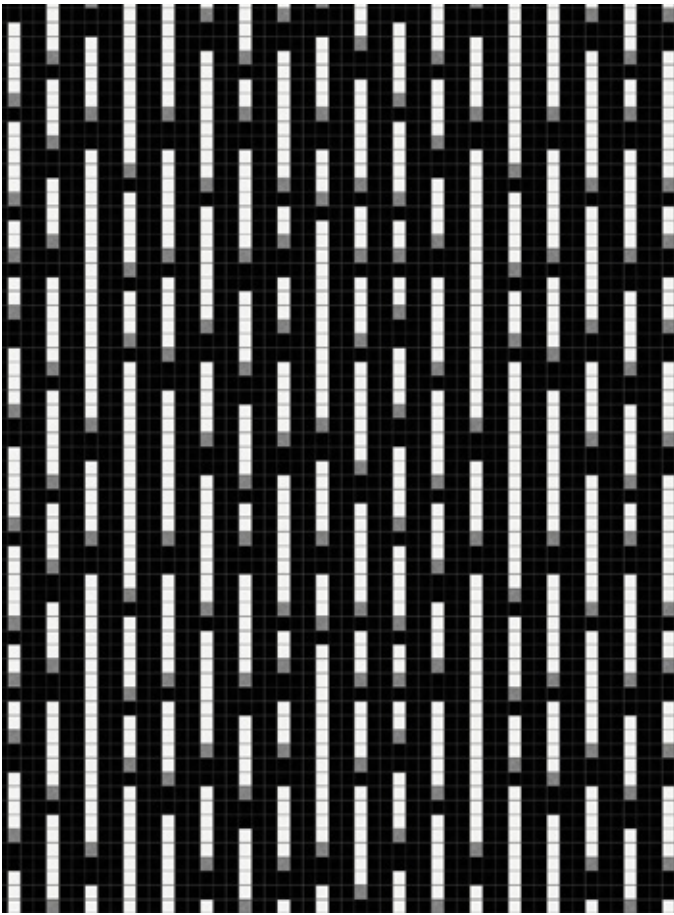
Design is shown at 175" W x 118" H - Seamless repeating pattern



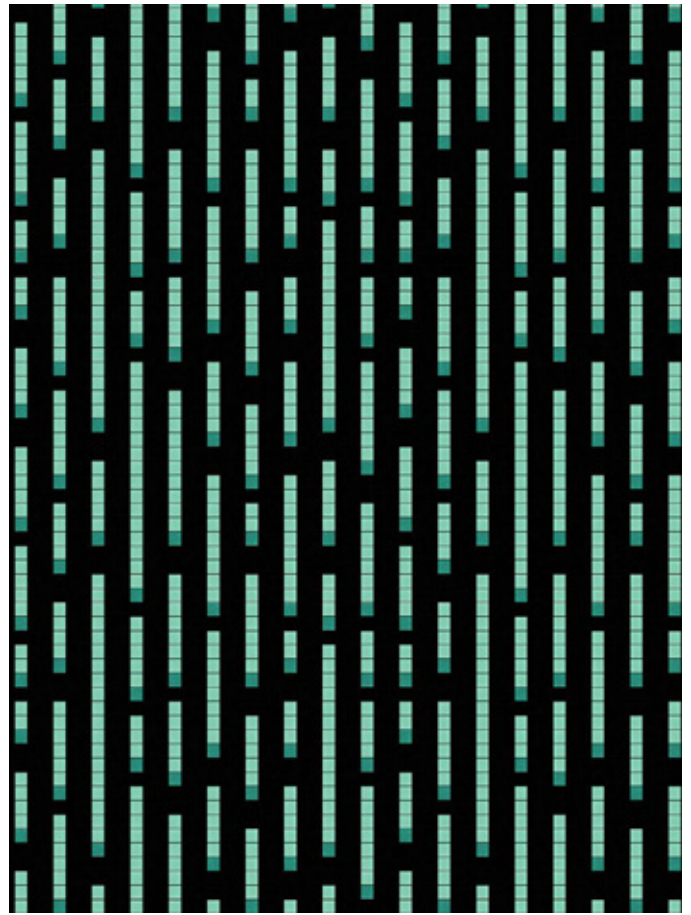
0092803 - Stellar, Lake



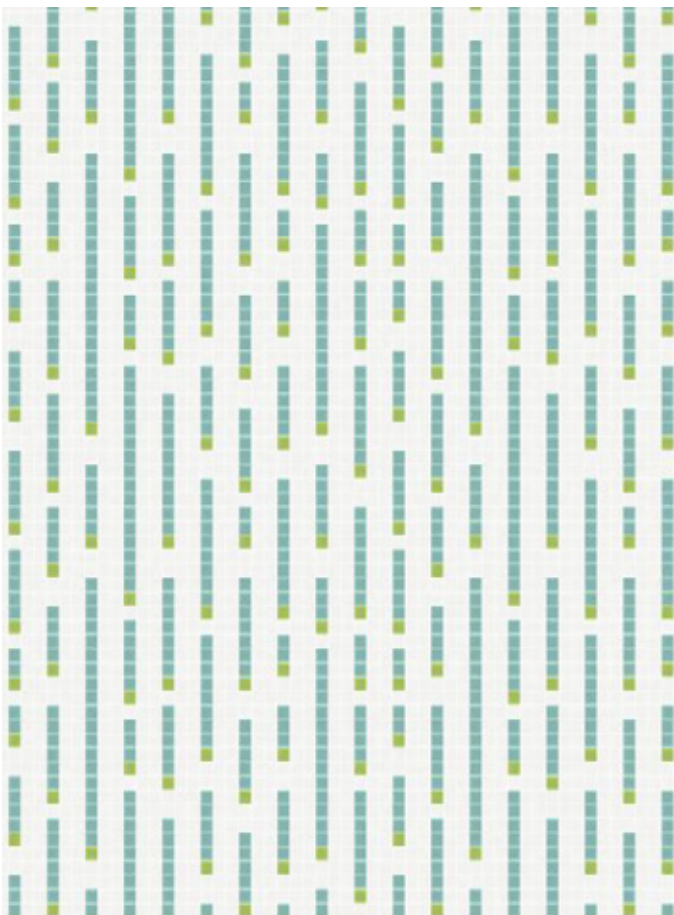
0092803 - Stellar, Lake



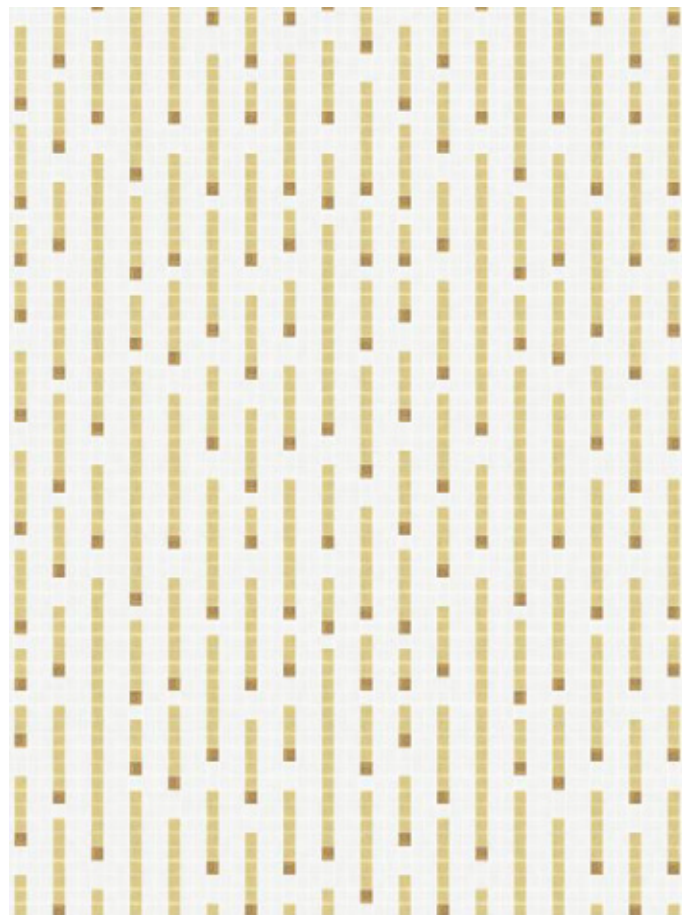
0092801 - Stellar, Lunar



0092810 - Stellar, Turquoise



0092811 - Stellar, Aloe



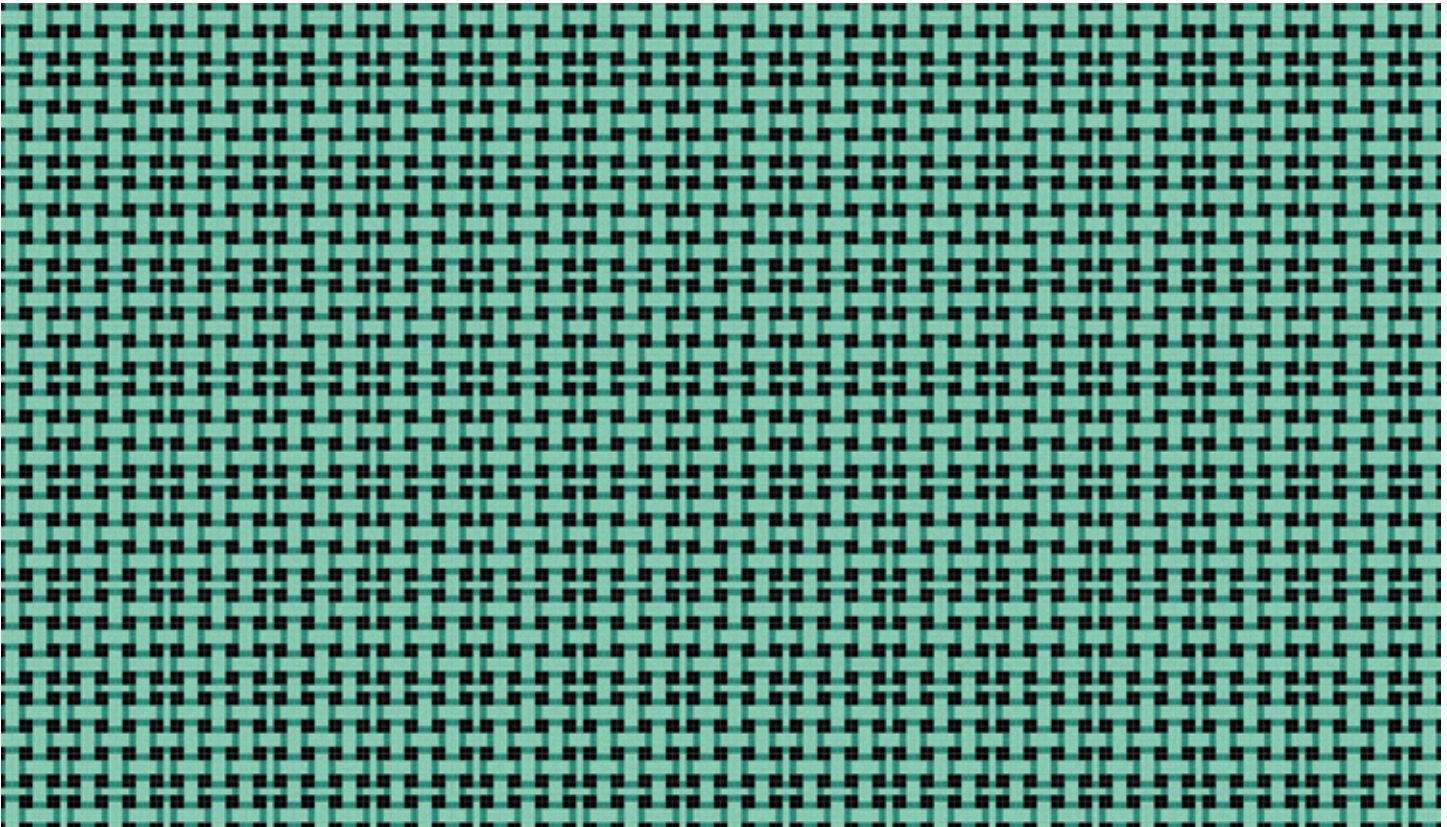
0092812 - Stellar, Shimmering Sands

# Weave

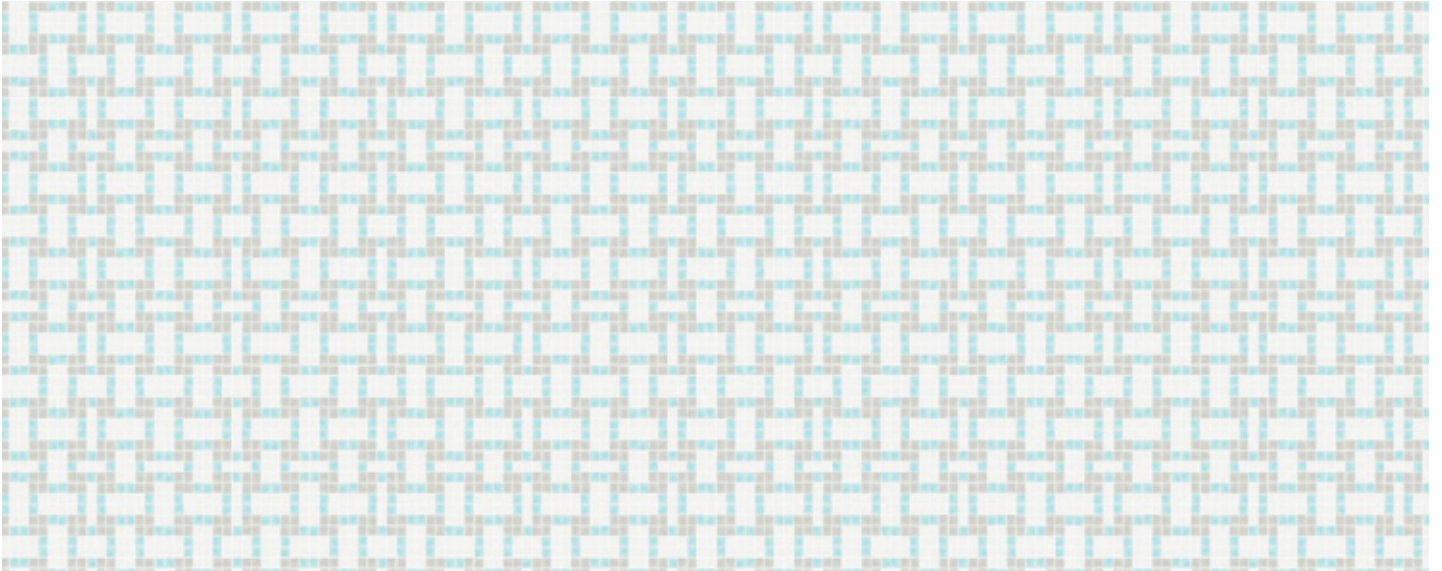
Design is shown at 175" W x 118" H - Seamless repeating pattern



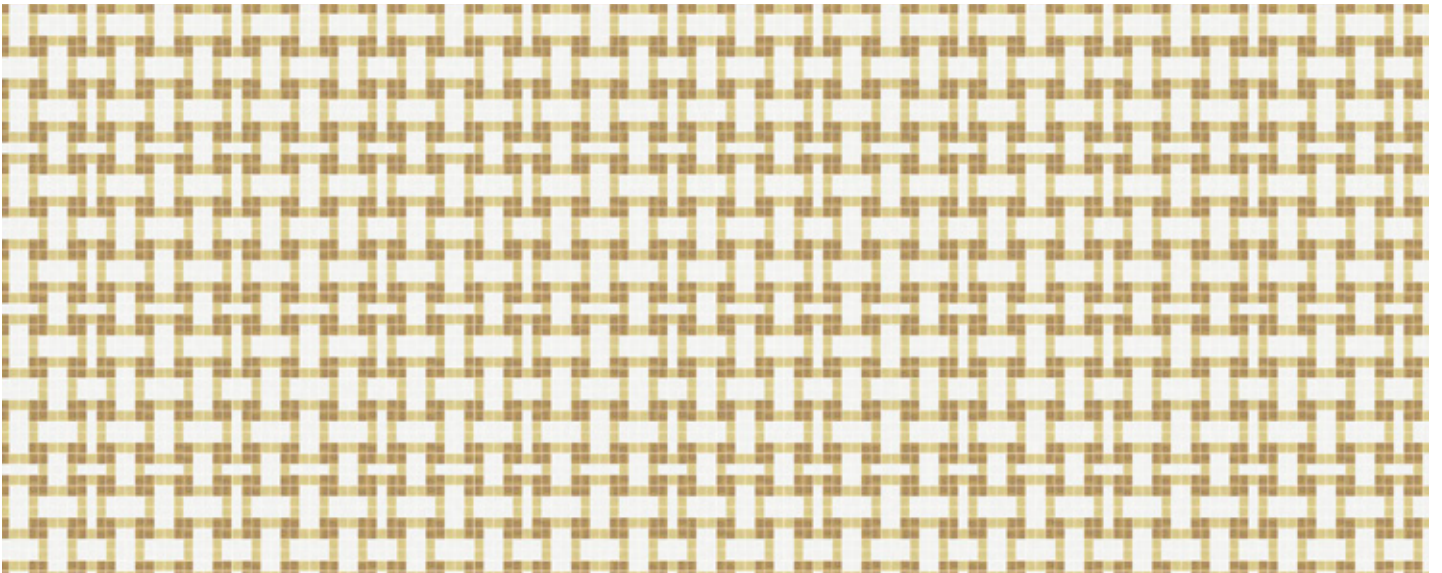
0091105 - Weave, Turquoise



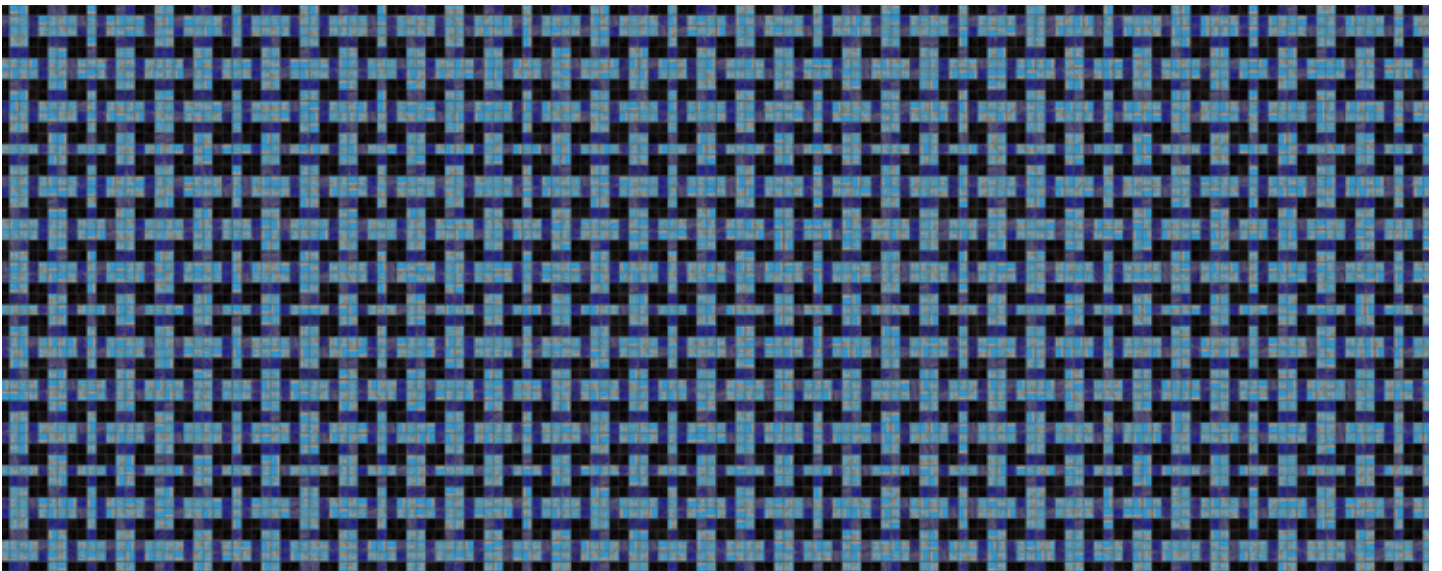
0091105 - Weave, Turquoise



0091104 - Weave, Aether



0091107 - Weave, Shimmering Sands



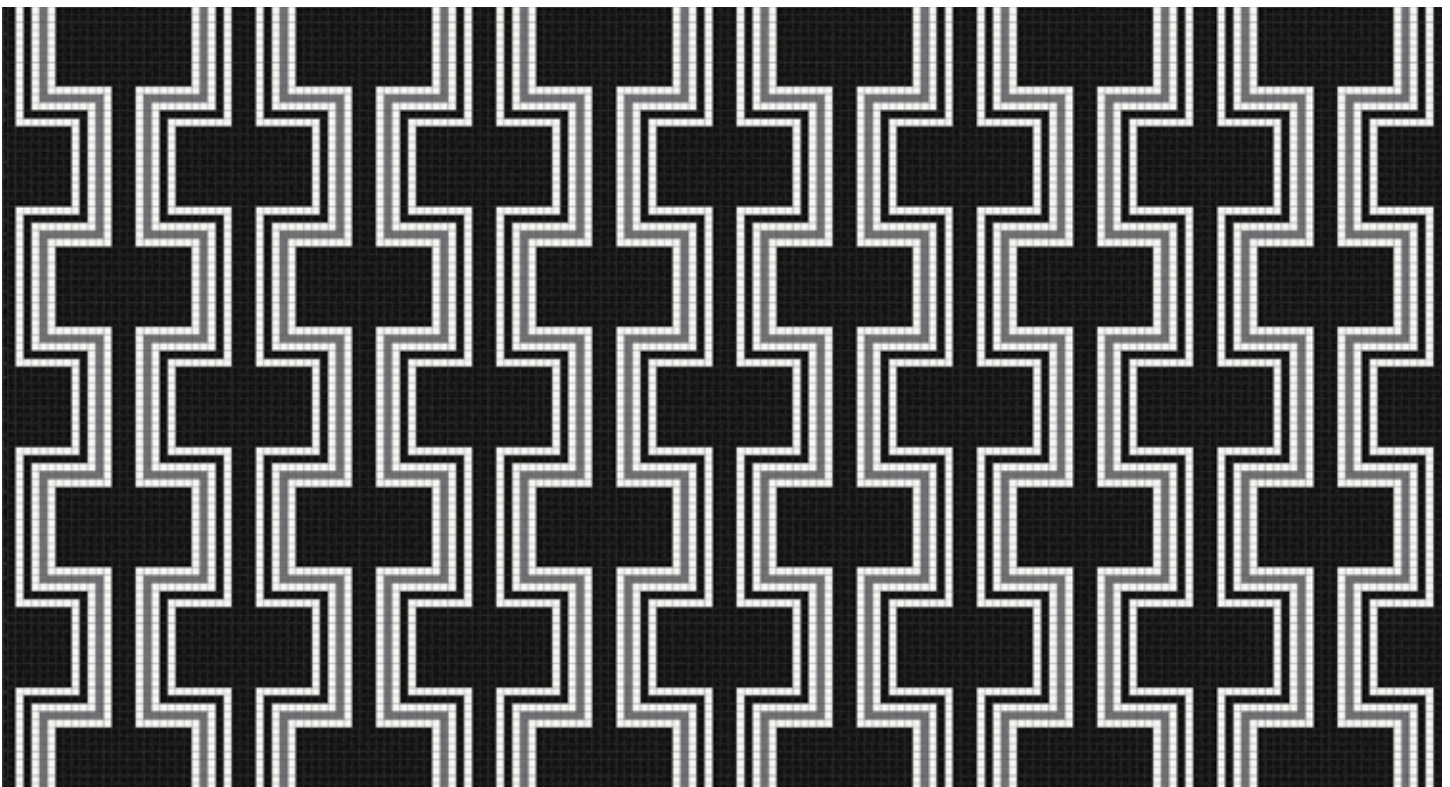
0091108 - Weave, Stormy Sky

# Retrograde

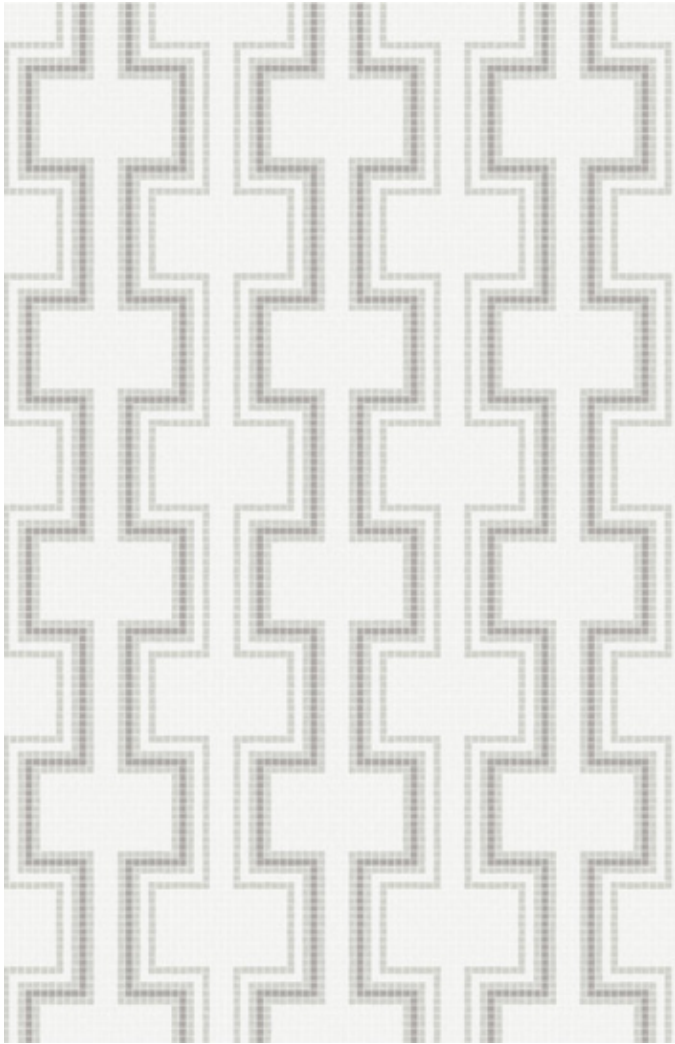
Design is shown at 175" W x 118" H - Seamless repeating pattern



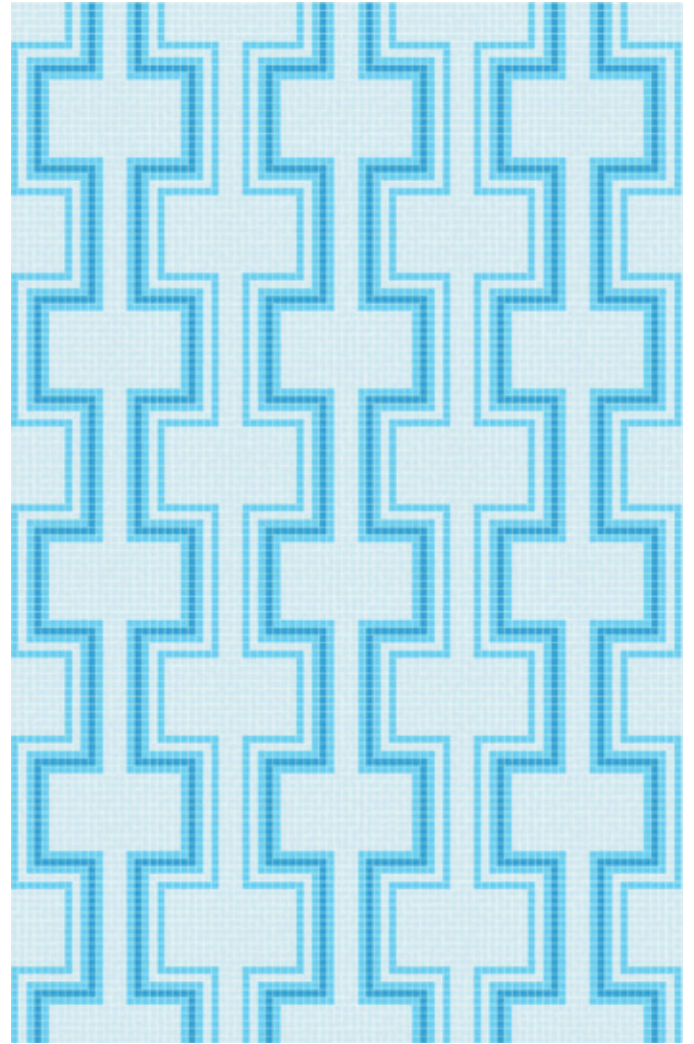
0092201 - Retrograde, Lunar



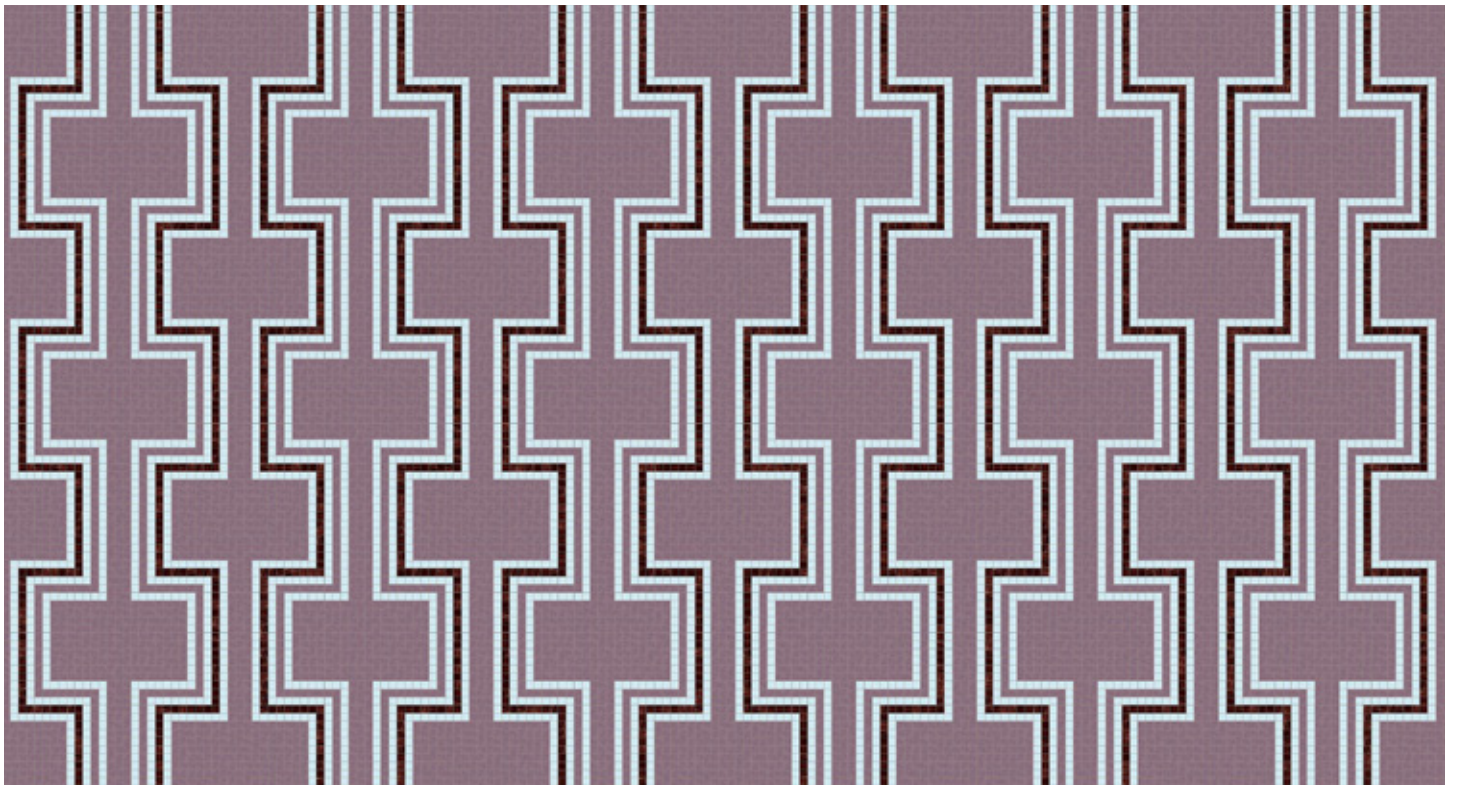
0092201 - Retrograde, Lunar



0092202 - Retrograde, Titanium



00992203 - Retrograde, Lake



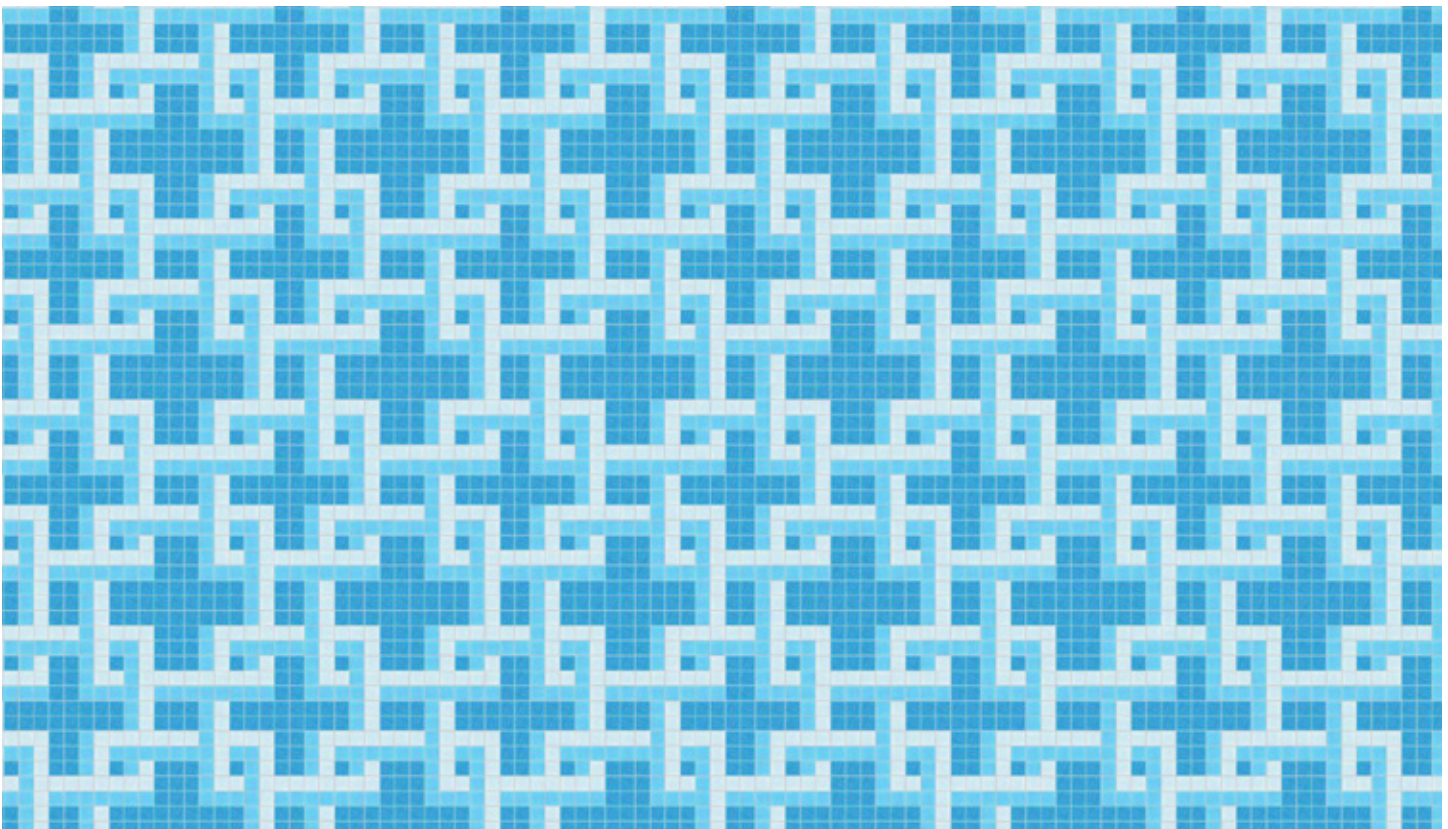
0092222 - Retrograde, Eggplant

# Lattice

Design is shown at 175" W x 118" H - Seamless repeating pattern

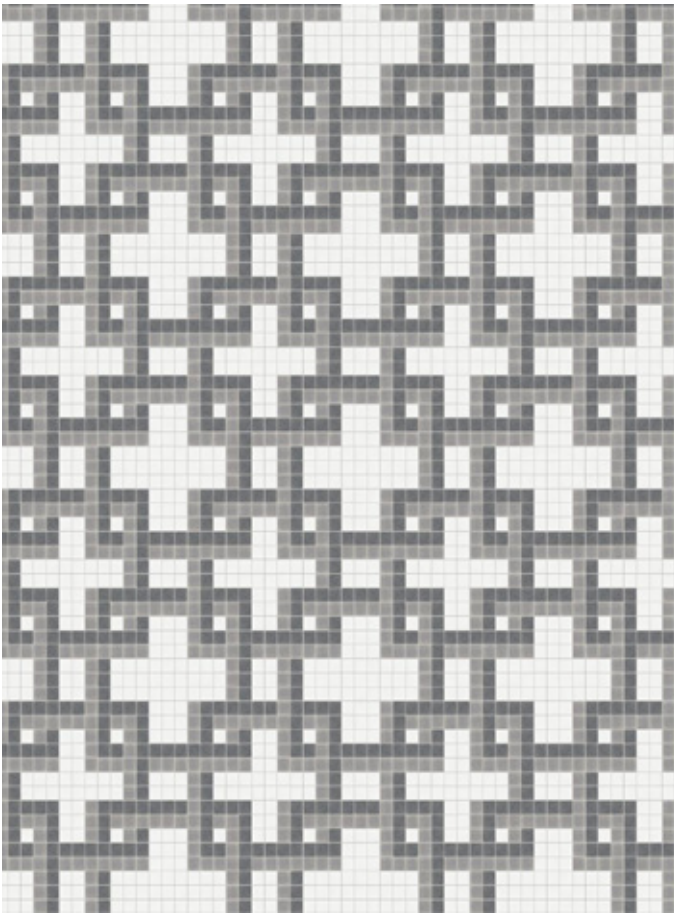


0091403 - Lattice, Lake

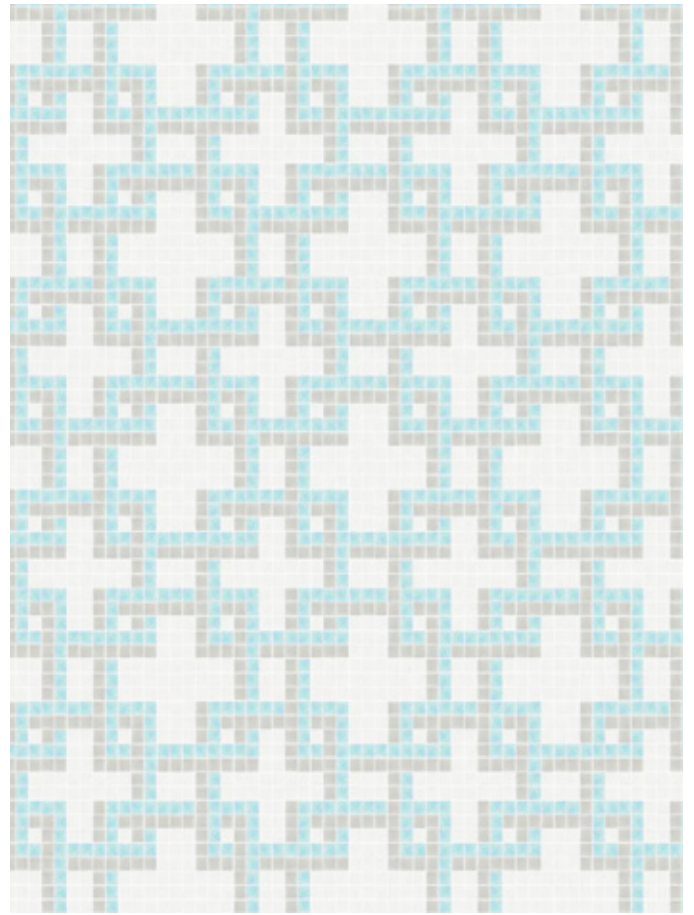


0091403 - Lattice, Lake

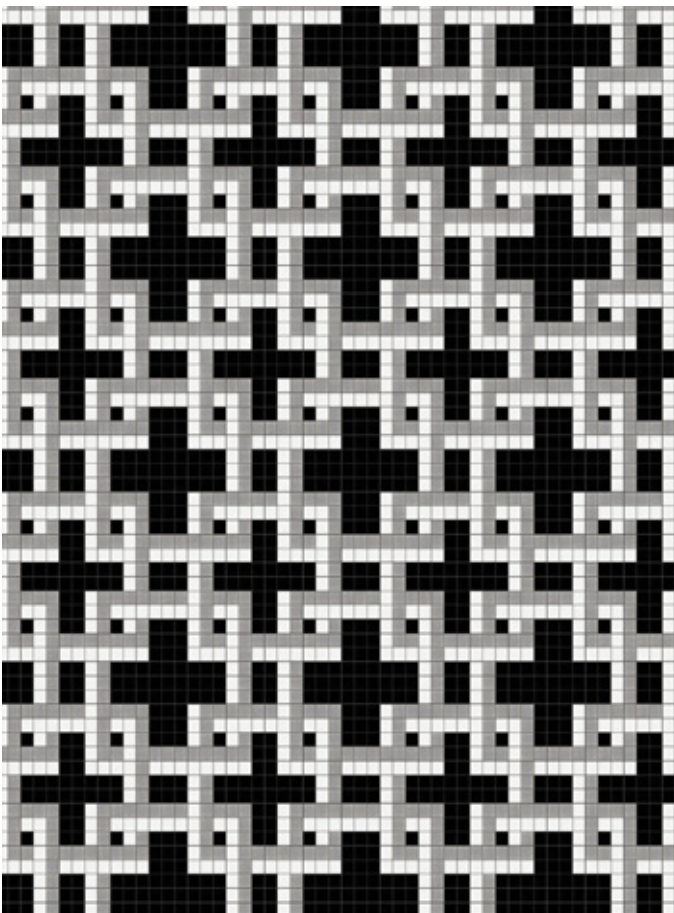




0091402 - Lattice, Titanium



0091404 - Lattice, Aether



0091401 - Lattice, Lunar



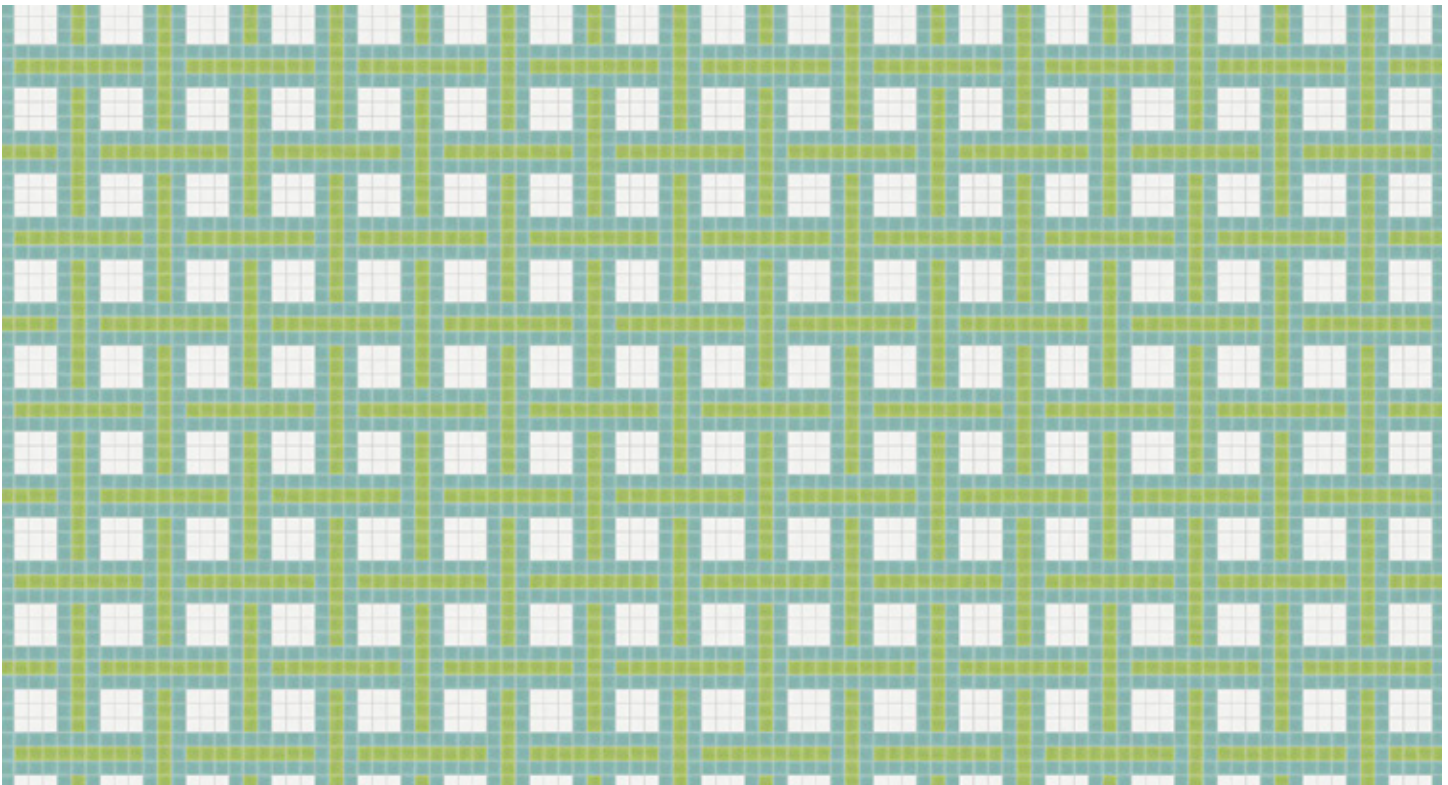
0091420 - Lattice, Empire

# Wicker

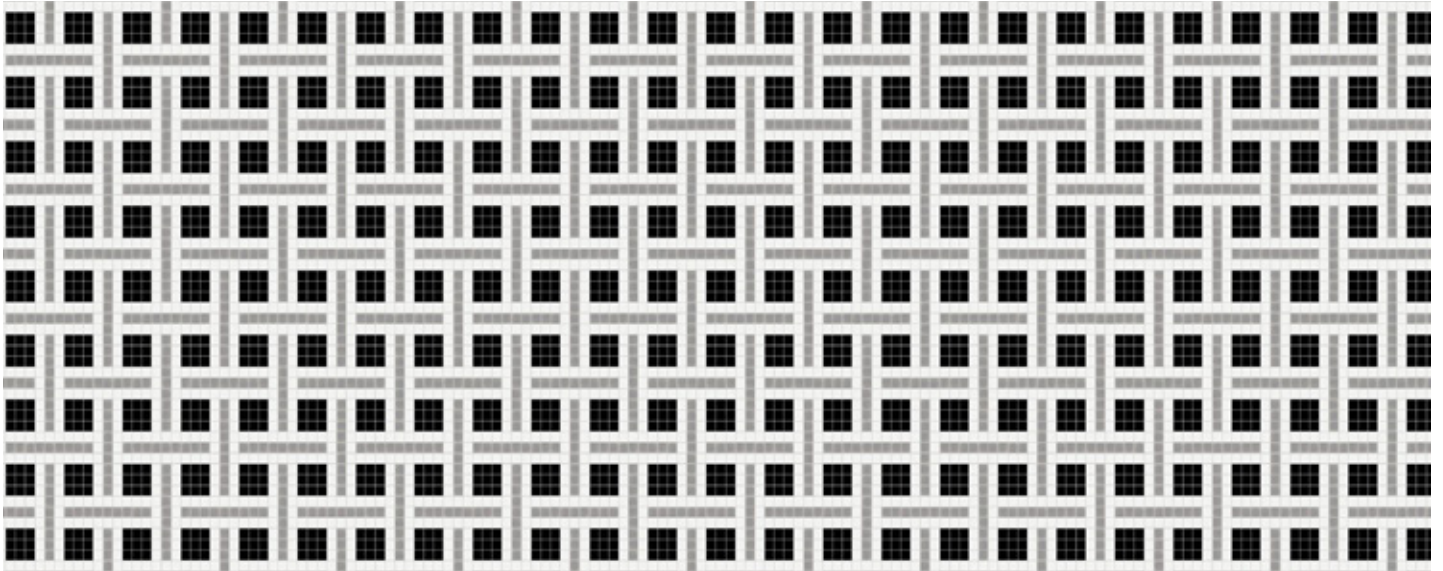
Design is shown at 175" W x 118" H - Seamless repeating pattern



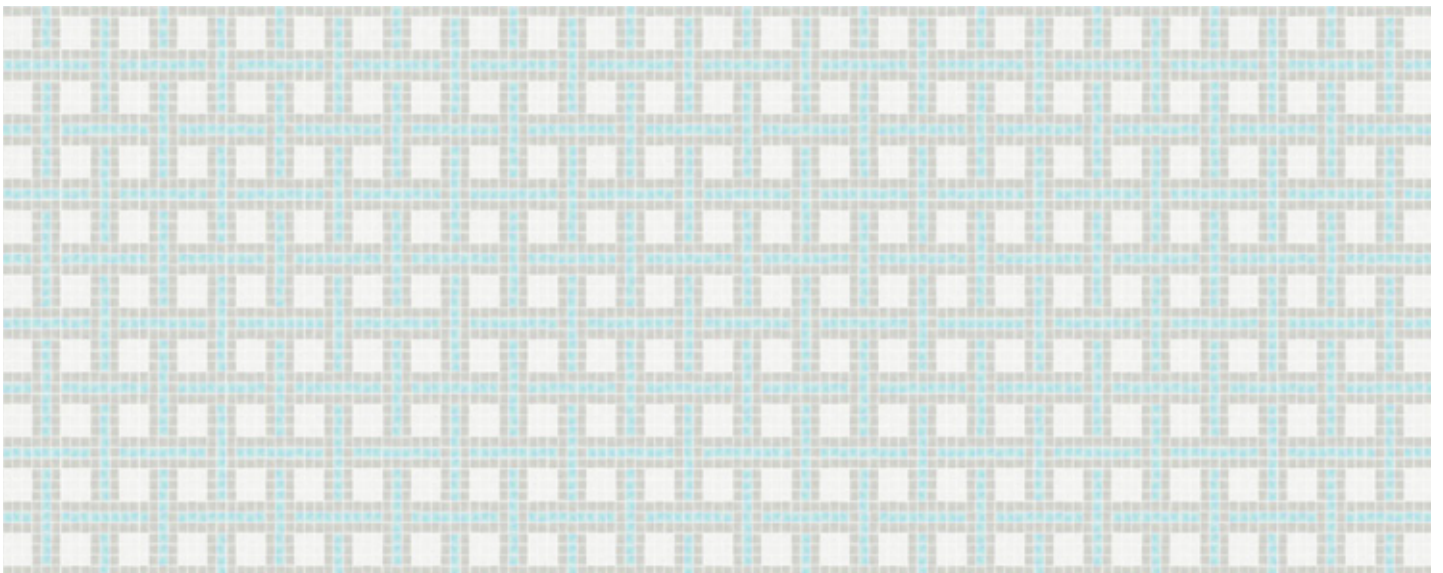
0092259 - Wicker, Aloe



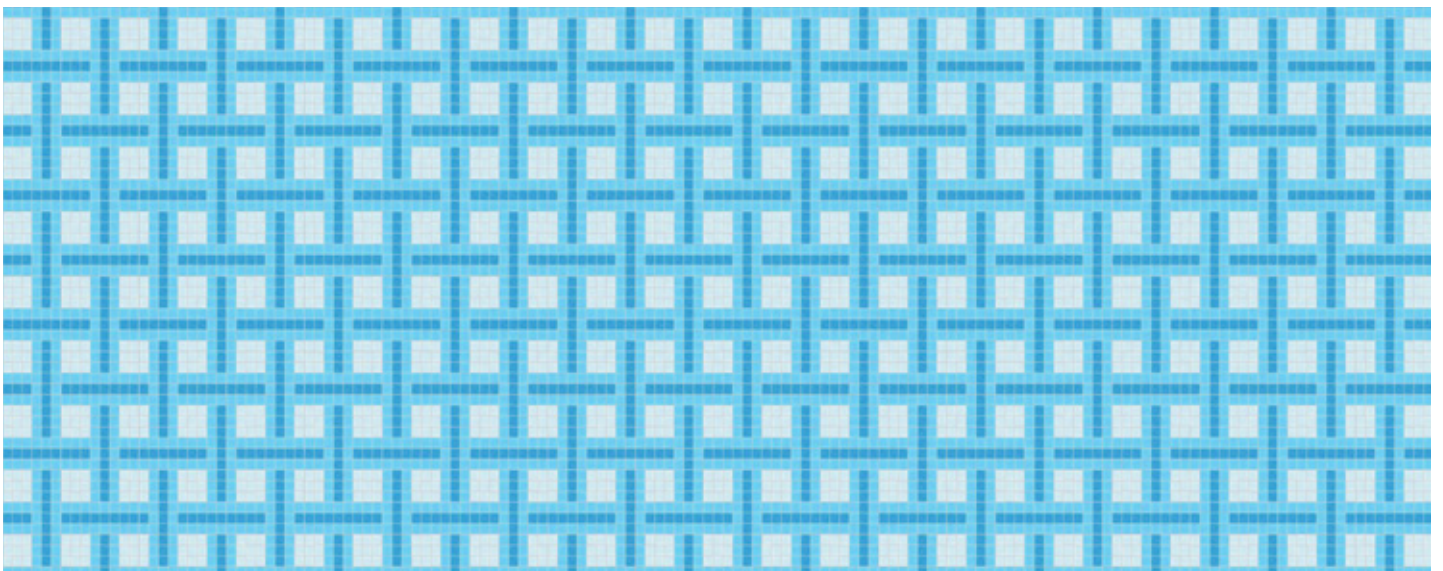
0092259 - Wicker, Aloe



0092251 - Wicker, Lunar



0092254 - Wicker, Aether



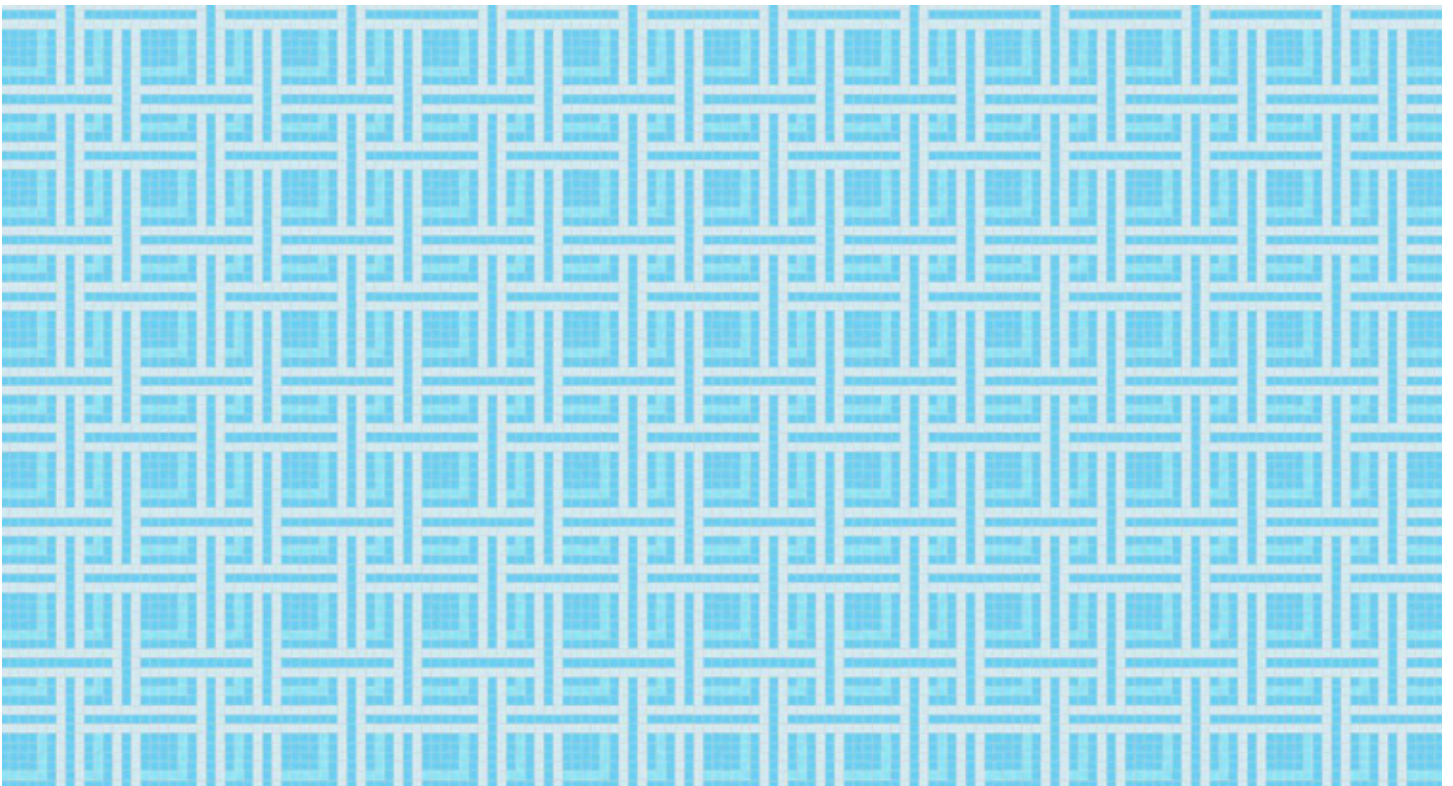
0092253 - Wicker, Lake

# Bypass

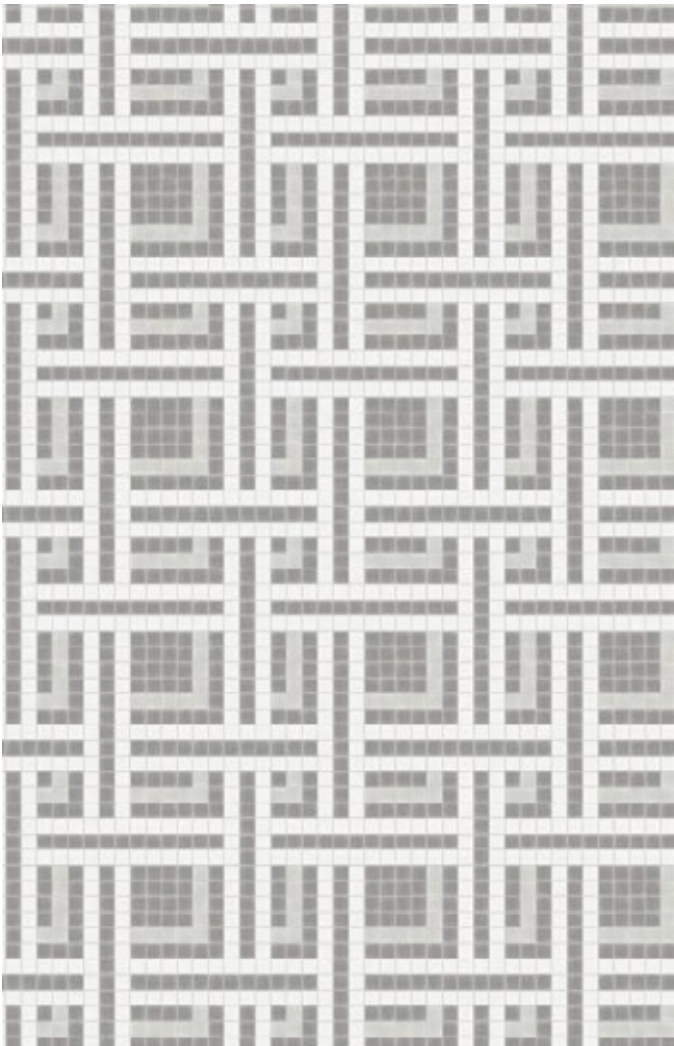
Design is shown at 175" W x 118" H - Seamless repeating pattern



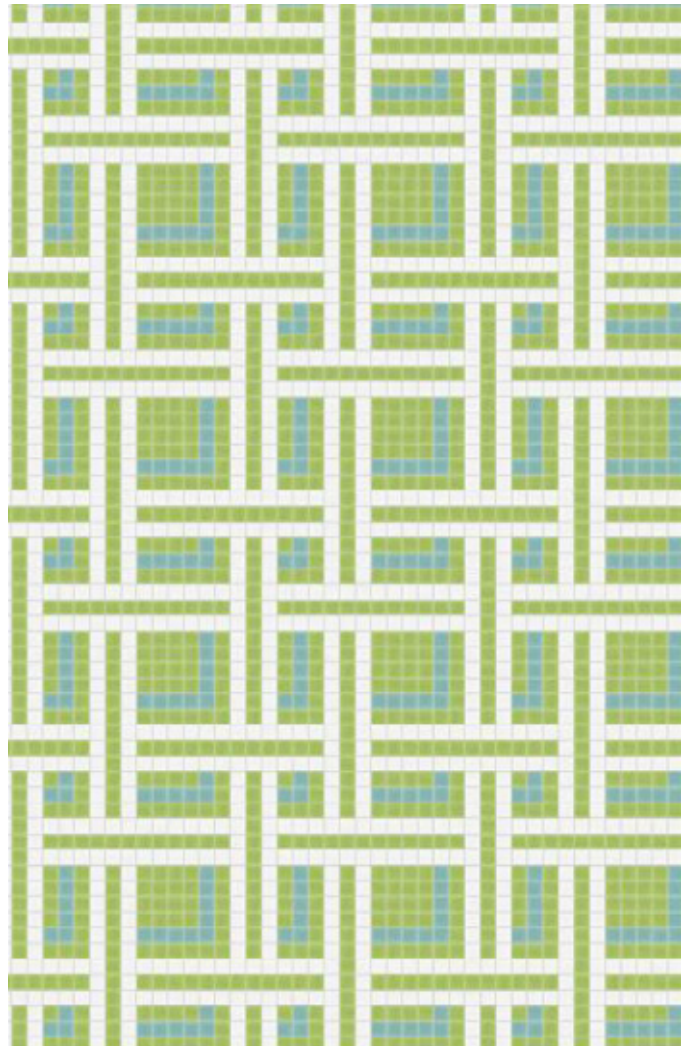
0091303 - Bypass, Lake



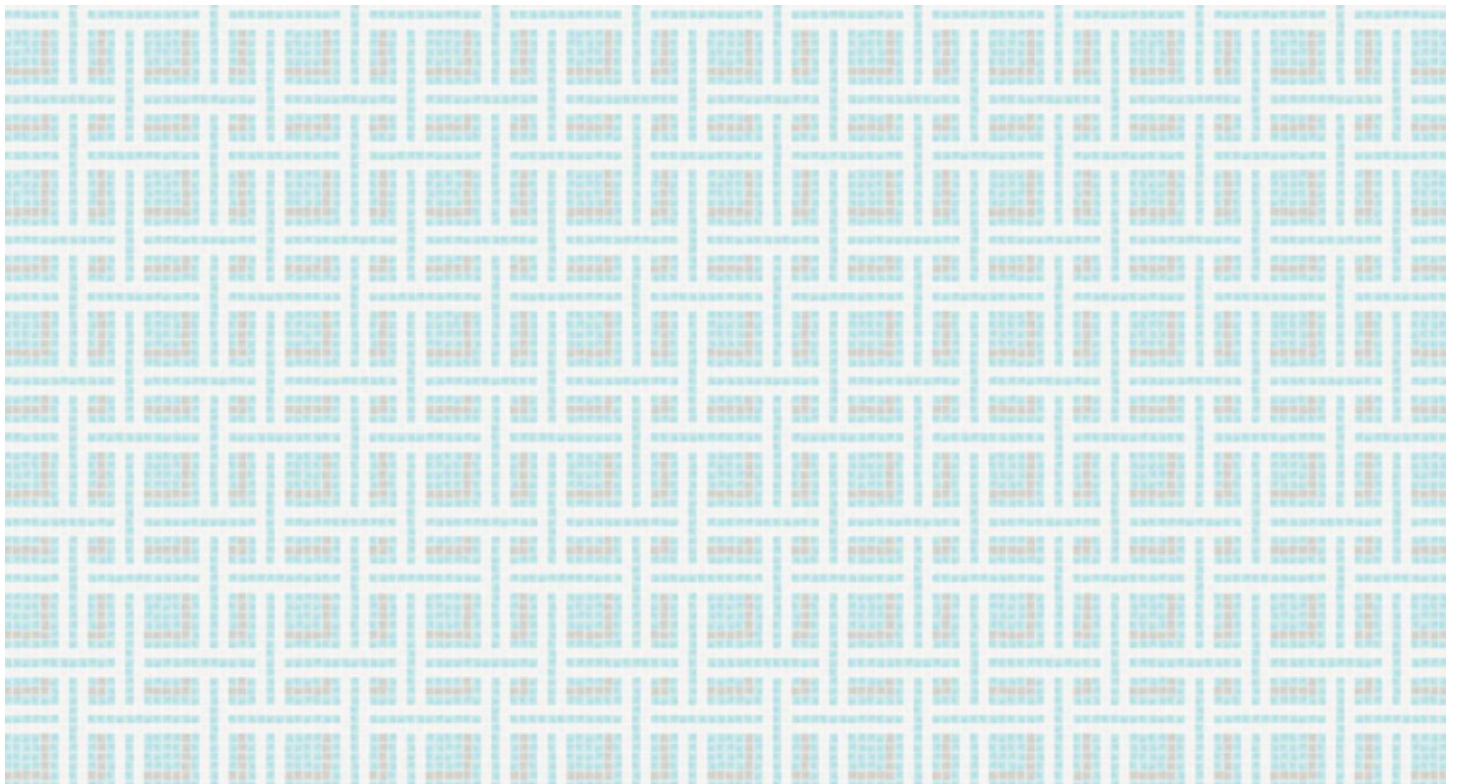
0091303 - Bypass, Lake



0091302 - Bypass, Titanium



0091309 - Bypass, Aloe



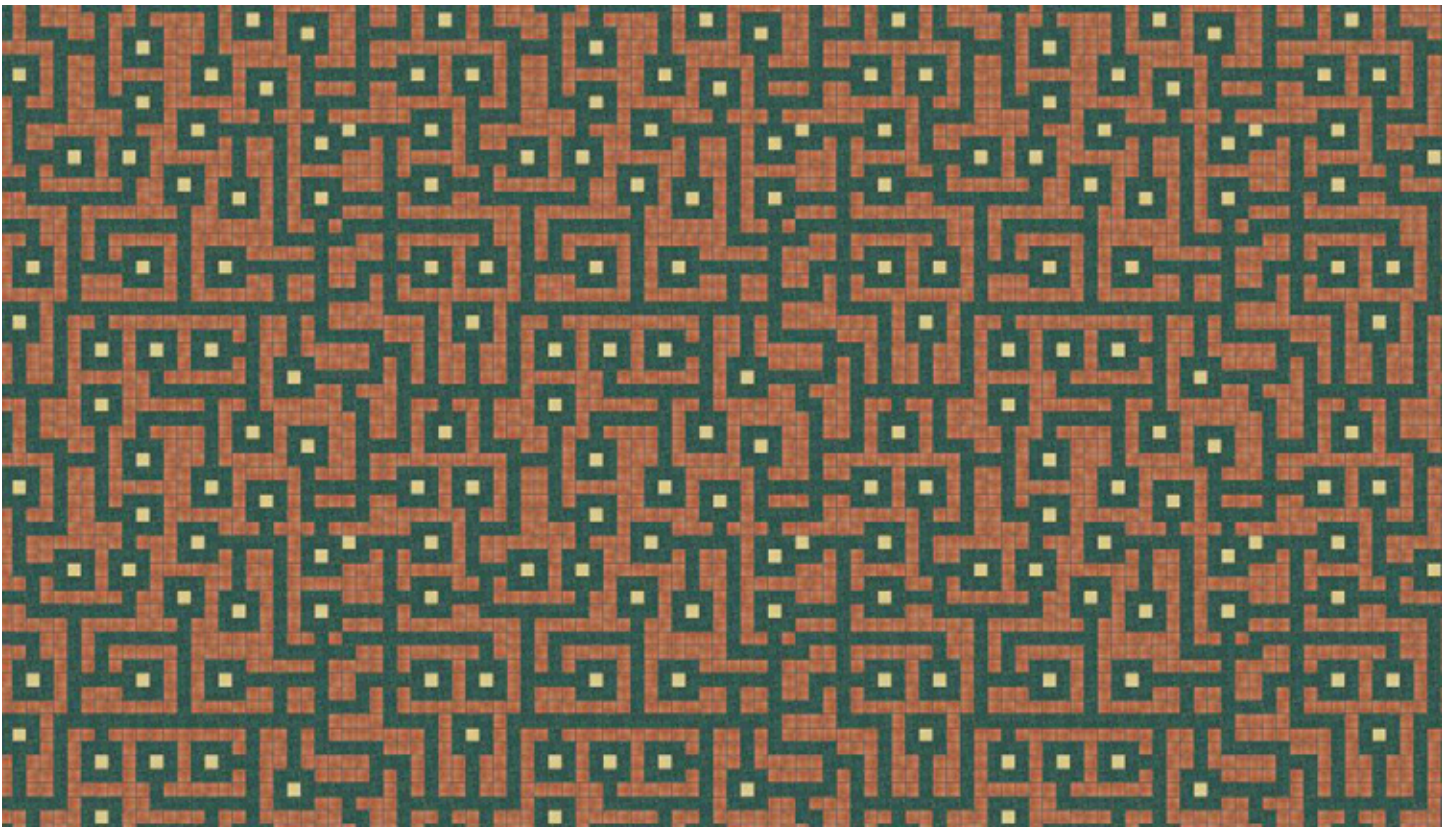
0091304 - Bypass, Aether

# Circuitry

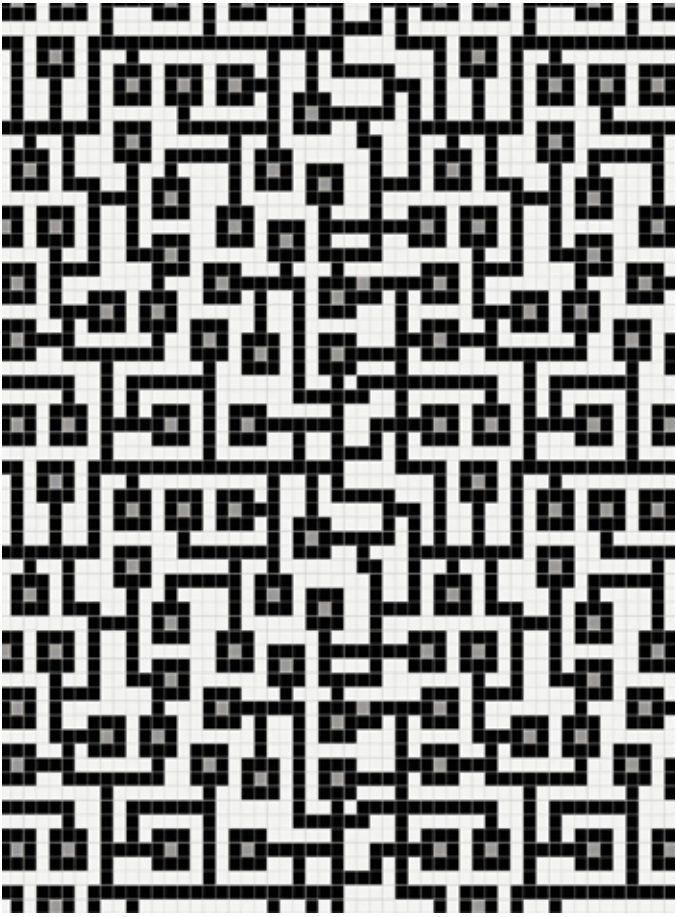
Design is shown at 175" W x 118" H - Seamless repeating pattern



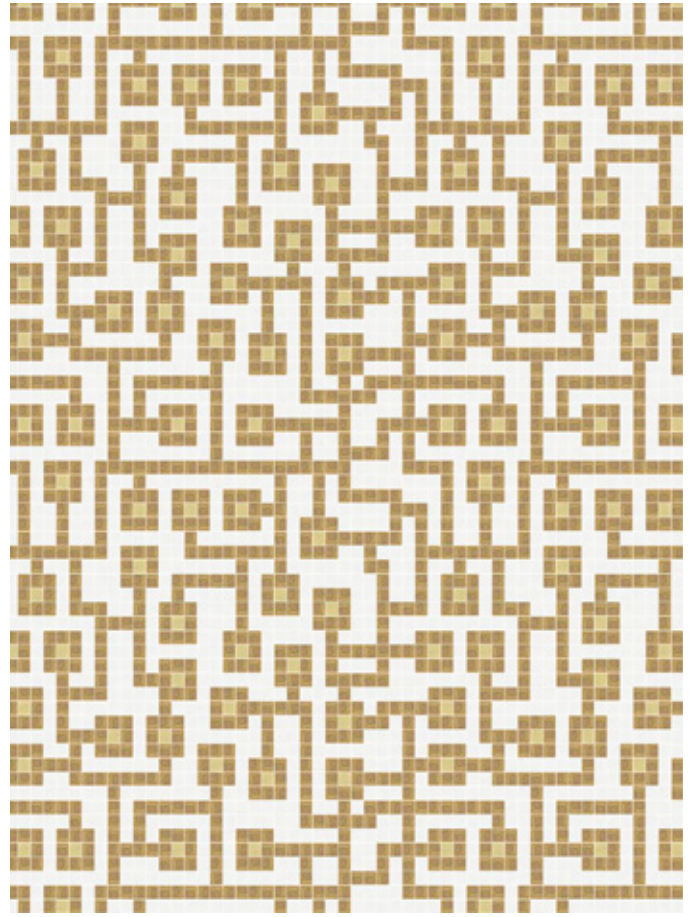
0092611 - Circuitry, Driftwood



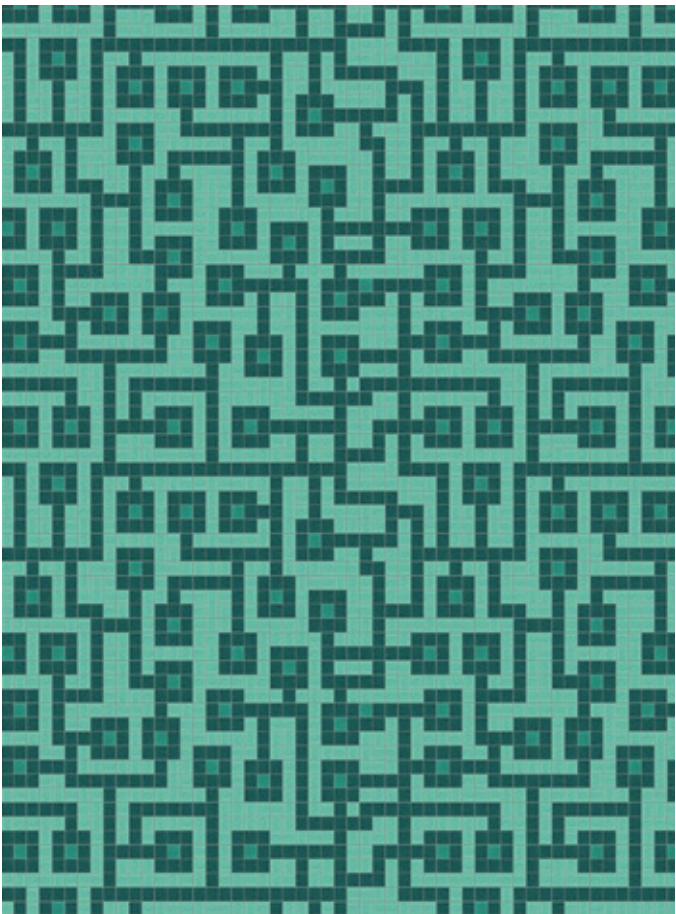
0092611 - Circuitry, Driftwood



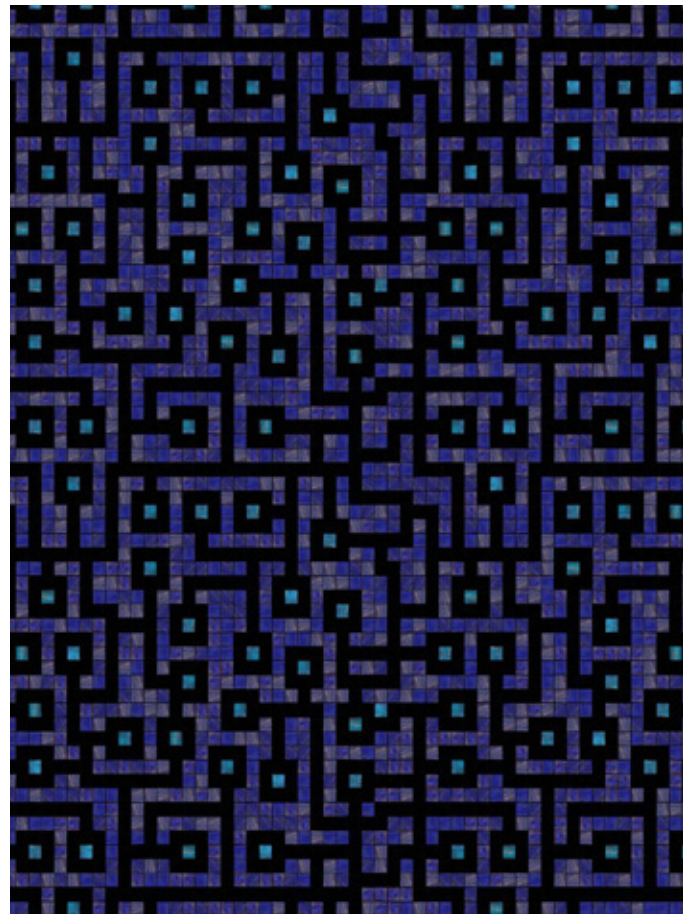
0092601 - Circuitry, Lunar



0092607 - Circuitry, Shimmering Sands



0092610 - Circuitry, Turquoise



0092608 - Circuitry, Stormy Sky



# THE URBN COLLECTION



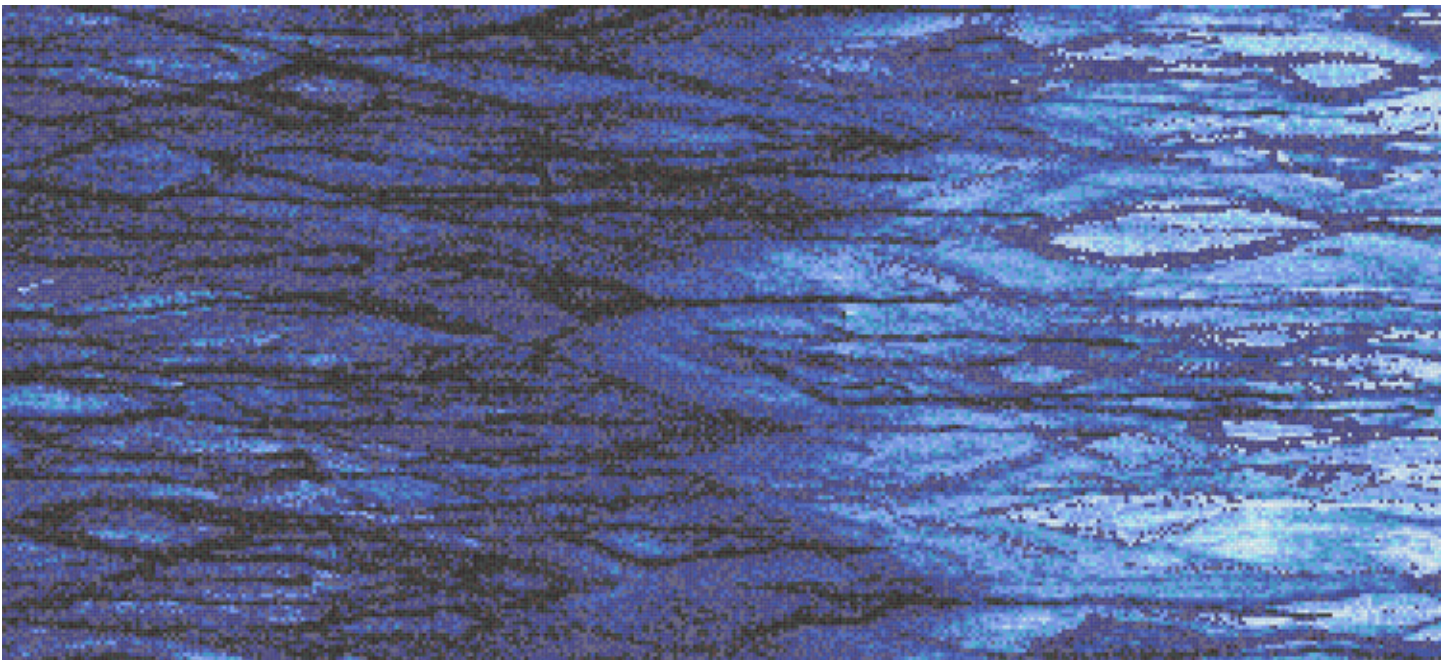
AFH artist, Lexi Zotov, uses Artaic's Tylist™ design software to transform her original artwork into a mosaic mural for the URBN Collection.

High contrast abstract patterns make up URBN - a bold mosaic collection that celebrates Boston's urban youth. Artaic, in collaboration with local non-profit **Artists For Humanity (AFH)**, uses design technology to transform teen artists' original artwork into mosaic murals.

**AFH receives a royalty from any URBN design that is produced. The purchase of your mosaic will directly benefit teen artists!**

Since its founding in 1991, **Artists for Humanity (AFH)** has used art and design to bridge economic, racial, and social divides by providing creative training, mentorship, and paid employment opportunities to underserved urban youth. **AFH** grew from an unconventional idea that young people can provide contemporary creative services to the business community. **AFH** employs 250+ Boston teens annually.

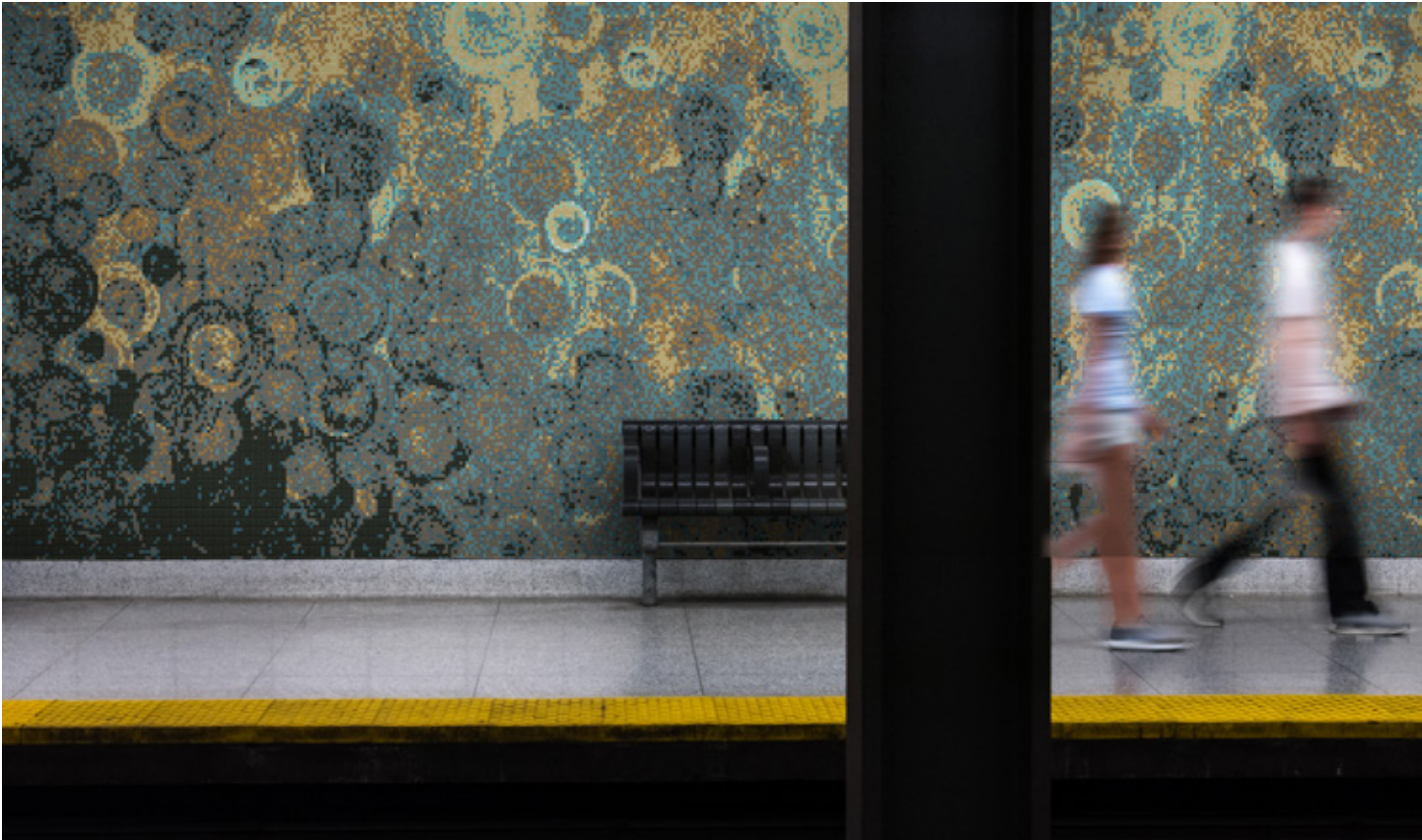
To see more designs and colorways from this collection, visit [Artaic.com/URBN](http://Artaic.com/URBN).



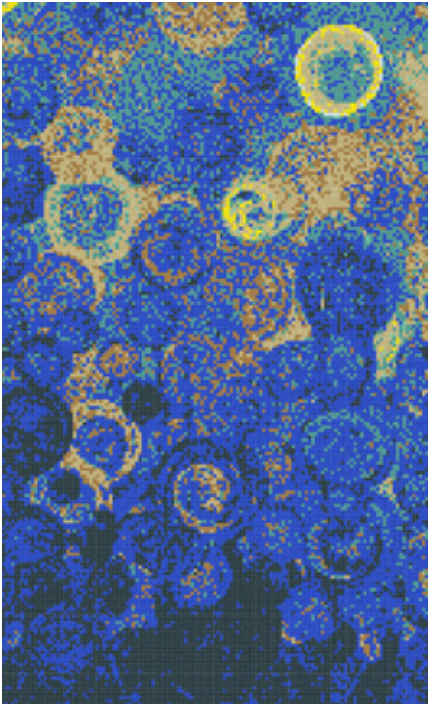
0304314 - URBN Collection:  
Tempest, Pacific



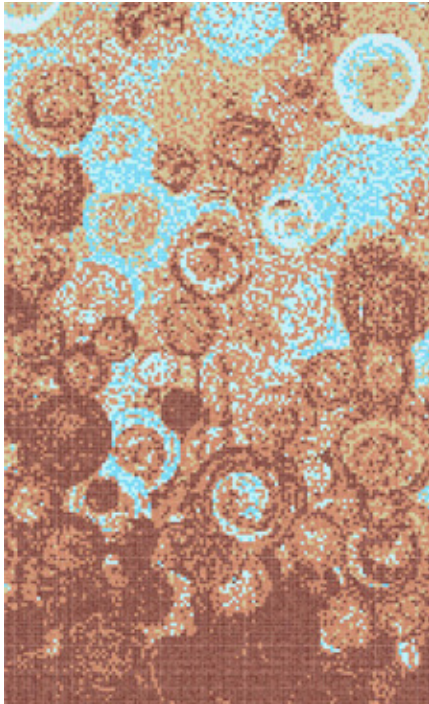
# By Artists for Humanity



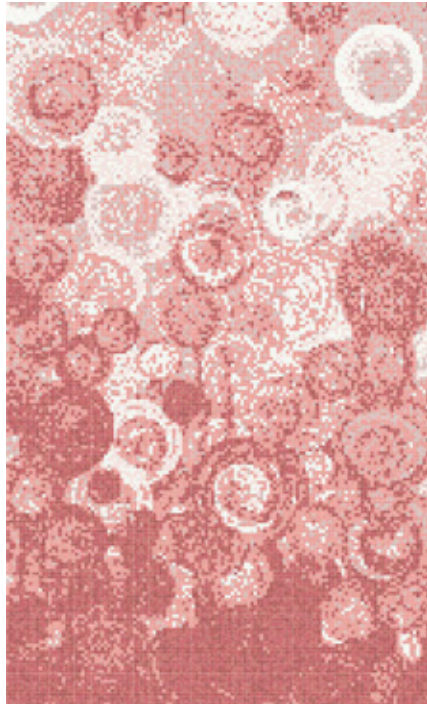
0303508 - URBN Collection: Gogh Away!, Beachfront  
By AFH teen artist



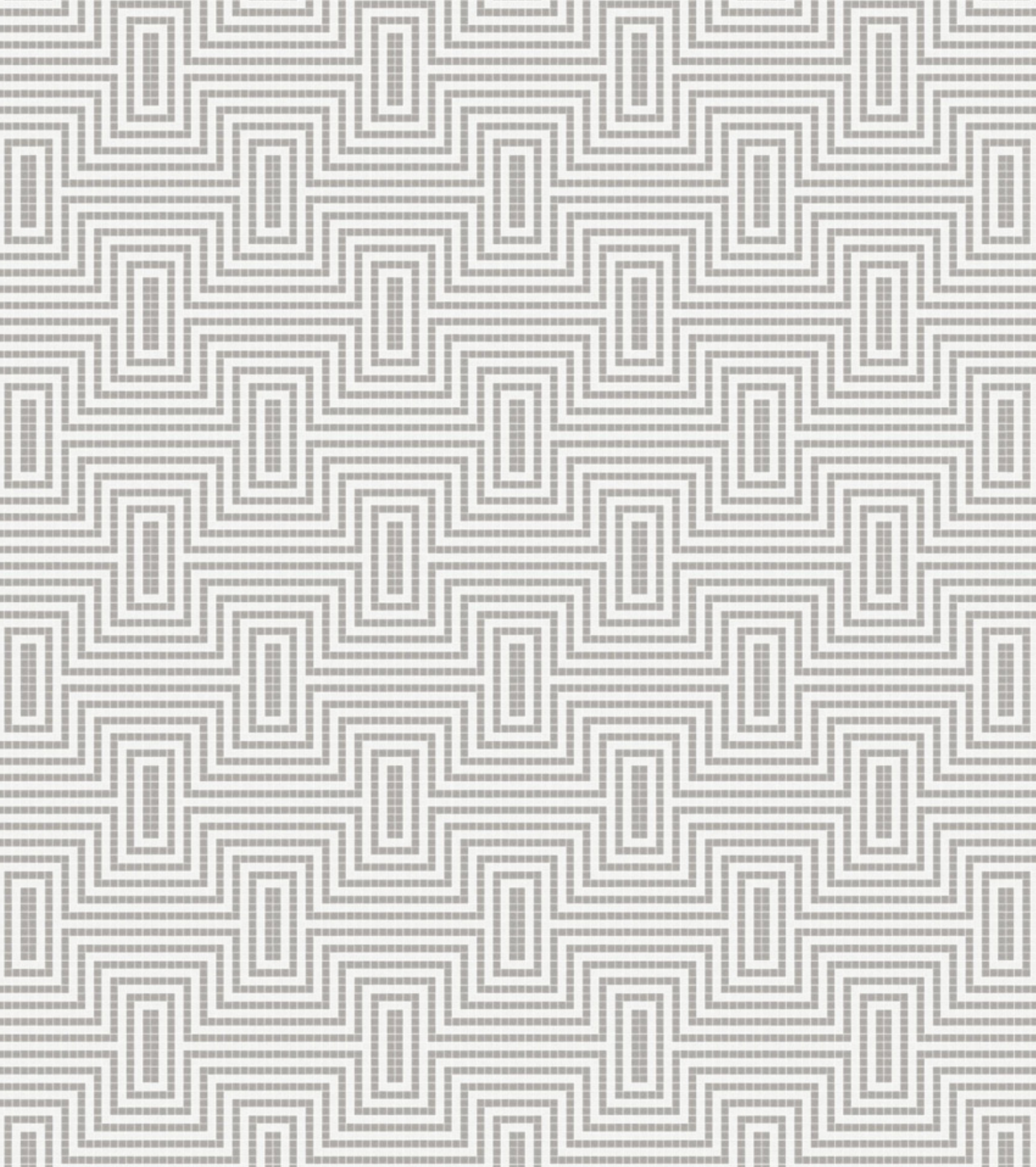
0303510 - URBN Collection:  
Gogh Away!, Starry Night



0303512 - URBN Collection:  
Gogh Away!, Canyon



0303513 - URBN Collection:  
Gogh Away!, Rose



[info@artaic.com](mailto:info@artaic.com) | [artaic.com](http://artaic.com) | +1.617.418.1928



Federal law provides severe civil penalties for the unauthorized reproduction or distribution or exhibition of this copyrighted work. Copyright infringement, including infringement without monetary gains, is illegal and can result in penalties of up to \$250,000 for each copyrighted work. Artaic LLC has the exclusive right, title and interest in the copyrighted material. Artaic LLC does not grant or convey any intellectual property rights, including but not limited to, the right to copy, reproduce, prepare derivative works, or distribute the copyrighted material without the express written consent of Artaic LLC. Any violation to the above terms is strictly prohibited. ALL RIGHTS RESERVED.